



Bulk Asbestos Analysis

(EPA Method 600/R-93-116, Visual Area Estimation)

San Francisco • Los Angeles • Minneapolis / St. Paul

Chico Unified School Dist
Kip Hansen

2455 Carmichael Drive
Chico, CA 95928

Client ID: 2921
Report Number: B021917
Date Received: 08/01/00
Date Analyzed: 08/01/00
Date Printed: 08/01/00
First Reported: 08/01/00

Job ID / Site: P.O. # M-254, Bidwell Sofit, Bidwell Jr. School

FASI Job ID: 2921-23

Sample Number	Lab Number	Asbestos Type	Percent in Layer	Asbestos Type	Percent in Layer	Asbestos Type	Layer
0000A	10039306						
Layer: Grey Cementitious Material			ND				
Layer: Tan Cementitious Material			ND				
Layer: Paint			ND				

Total Composite Values of Fibrous Components: **Asbestos:(ND)** Cellulose (Trace%) Fibrous Glass (ND)
Comment: Collected on 7-31-00

James Flores, Laboratory Supervisor, Hayward Laboratory

Note: Limit of Quantification ('LOQ') = 1%. 'Trace' denotes the presence of asbestos below the LOQ. 'ND' = 'None Detected'.

Forensic Analytical results and reports are generated by Forensic Analytical at the request of and for the exclusive use of the person or entity (client) named on this report. Results, reports or copies of same will not be released by Forensic Analytical to any third party without prior written request from the client. This report applies only to the sample(s) tested. Supporting laboratory documentation is available upon request. This report must not be reproduced except in full, unless approved by Forensic Analytical. The client is solely responsible for the use and interpretation of test results and reports requested from Forensic Analytical. This report must not be used by the client to claim product endorsement by NVLAP or any other agency of the U.S. Government. Forensic Analytical is not able to assess the degree of hazard resulting from materials analyzed. Forensic Analytical reserves the right to dispose of all samples after a period of thirty (30) days, according to all state and federal guidelines, unless otherwise specified.

BULK SAMPLE REQUEST FORM

2921-23



CLIENT NAME & ADDRESS:

Chico Unified School District
 2455 Carmichael Dr ~~95628~~
 Chico, Ca. 95928

PHONE: 530-895-4179

DATE: 7-31-00

FAX 530-891-3190

Circle the Method and Turn Around Time

Results Needed:

hr/12hr/24hr/48hr/Ext

FAX ASAP
By 8-1-00 NOON

PLM: Standard / Point Count

Gravimetry Prep

CONTACT: Kip Hansen

TEM: QUAL / QUANT. / WATER

P.O.#

M-254

JOB #

Bidwell Soffit

AA/Flame AA/Furnace ICP

METALS: _____

SITE: Bidwell Jn School

SAMPLE NUMBER

DATE
COLLECTED

SAMPLE LOCATION/DESCRIPTION

0000A

7/31/00

South west corner of facade in Quad
 BJHS ²⁰⁰ ~~200~~ wing

Please analyze for Asbestos
 & Report by FAX no later than
 NOON 8-1-00 Kip Hansen

Sampled by: Kip Hansen

Date: 7-31-00 Time: 9:58

Relinquished by: Kip Hansen

Received By: Fed-Ex

Time: 7-31-00 3:00 PM

Date/Time:

Sealed Condition (circle one) YES / NO

Relinquished by:

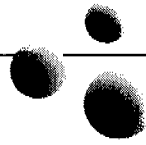
Received By: chm

Date/Time:

Date/Time: 8/1/00 10:01 am

Sealed Condition (circle one) YES / NO

CAL



INC

FINAL PROJECT REPORT

For

**REMOVAL OF
ASBESTOS-CONTAINING MATERIALS**

At

**BIDWELL JUNIOR HIGH SCHOOL
2376 NORTH AVENUE
CHICO, CALIFORNIA**

PREPARED ON BEHALF OF:

**CHICO UNIFIED SCHOOL DISTRICT
2455 CARMICHAEL DRIVE
CHICO, CALIFORNIA
95928**

PREPARED BY:

**CAL INC
2040 PEABODY ROAD, SUITE 400
VACAVILLE, CALIFORNIA 95687**

JULY 2000

Table of Contents

Final Project Report

for the
**Removal of Asbestos-
Containing Materials**
at
**Bidwell Junior High
School**
Sky Light Wells

Prepared for:



Facilities Department
2455 Carmichael Drive
Chico, California 95928

Prepared by:

CAL

INC

*General Construction, Environmental Services
& Training*

2040 Peabody Road
Vacaville, California 95687
(800) 359-4467
www.cal-inc.com

CAL INC Project # 5403
Summer 2000

Executive Summary

CAL INC Daily Log

3

CAL INC Air Monitoring Results

4

Contractor Air Monitoring Records

5

Technical Specifications

6

Addenda

7

Change Orders

8

Meeting Minutes

9

Contractor's Submittals

10

Miscellaneous Items

CAL

INC

Corporate Office

2040 Peabody Road
Suite 400
Vacaville, CA 95687
707/446-7996
FAX 707/446-4906

Petaluma

599 Tomales Road
Bldg. 160
Petaluma, CA 94952
707/762-3484
FAX 707/762-4088

Indiana

Grissom ARB, IN 46791
765/689-9053

General Construction**Environmental
Remediation****Environmental
Engineering****Environmental
Training****Environmental
Database Tracking**

September 26, 2000

Mr. Rob Peters
Chico Unified School District
2455 Carmichael Drive
Chico, CA 95928

Re: CAL INC Project #5403; Chico Junior High School; Bidwell Junior High School Asbestos Abatement Project Oversight.

Dear Mr. Peters:

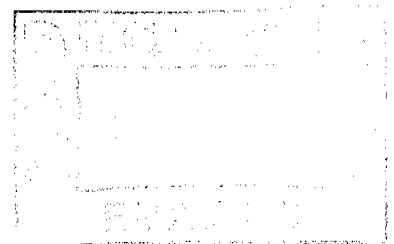
Enclosed in this correspondence are two copies of air sample results for Bidwell Junior High School that somehow did not make it into the two copies of the final report that you received last week. Please insert these copies into the appropriate places in Tab 3 of the reports. The first page (before the red divider page) will go at the end of the "area" samples and the remainder of the pages will go at the end of Tab 3.

Should you have any questions regarding these copies please feel free to call any time. Thank you.

Sincerely,


Peter F. Connell
Project Manager
CAL INC

John J. J.



CAL

INC

Corporate Office

2040 Peabody Road
Suite 400
Vacaville, CA 95687
707/446-7996
FAX 707/446-4906

Petaluma

599 Tomales Road
Bldg. 160
Petaluma, CA 94952
707/762-3484
FAX 707/762-4088

Indiana

Grissom ARB, IN 46791
765/689-9053

General Construction**Environmental
Remediation****Environmental
Engineering****Environmental
Training****Environmental
Database Tracking**

September 15, 2000

Mr. Rob Peters
Chico Unified School District
2455 Carmichael Drive
Chico, CA 95928

RE: Executive Summary - Project for the Abatement of Asbestos Containing
Plaster from twenty-one roof vents at Bidwell Junior High School, Summer
2000.

Dear Mr. Peters:

CAL INC is pleased to provide this Final Project Report for the Asbestos Removal Project at Bidwell Junior High School that was performed as an adjunct to the Removal Project at Chico Junior High School. This adjunct project both commenced and ended in July of 2000.

The Final Project Report consists of this Executive Summary, a complete copy of our field representative's Daily Log, all air-monitoring results, a copy of the Technical Specifications for the project along with all Addenda and Changes to the Contract Documents, Meeting Minutes, a copy of all Abatement Contractor Submittals and others miscellaneous items. One copy of the Report should be kept at your Facilities office and the other copy should be maintained at Bidwell Junior High School.

Purpose and Scope of the Project:

The purpose and scope of the asbestos removal project was to remove materials that have been identified in asbestos inspections as being asbestos-containing that would be impacted by the scope of the limited work of sealing roof vents at the school. Removal was limited only to those materials that the planned construction activities would likely disturb as per directions from your office.

The Process:

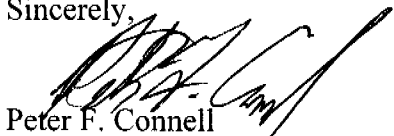
The scope of roof-vent related work was identified by Chico USD and relayed to CAL INC. The plaster material to be impacted by the work was quantified and CAL INC then prepared an adjunct technical specification (Tab 5 of this report) to work in conjunction with the larger Technical Specifications that were prepared for the Chico Junior High School Abatement that progressed concurrently. The work was performed by West Coast Environmental of Rancho Cordova, California, and that contractor performed the work under the direction and oversight of one of CAL INC's Certified Asbestos Consultants.

Project Outcome:

The Contractor performed all of the work identified in the Contract Documents without the occurrence of any notable incidents. Air samples were taken before work began in each work area, at the perimeter of each work area, inside each work area while work was being performed, and as part of a Clearance of each work area in accordance with established methodologies and pertinent regulations. Clearance is a means of determining that an area that is safe to re-occupy in terms of asbestos dust and airborne fibers. Each of the work areas passed the clearance visual and air sampling protocols established for schools.

Should you or any school personnel have any questions regarding the project or this report, please feel free to convey those questions to me. We will be glad to help in any way that we can. Thank you also for the part that you and other Chico USD personnel played in making this project a success by your cooperation, attentiveness and commitment to quality. These are all ideals that CAL INC espouses; it is refreshing to work with a client that shares them.

Sincerely,

A handwritten signature in black ink, appearing to read "P. F. Connell", written over the printed name.

Peter F. Connell
Project Manager, CAC # 93-1132
CAL INC

DAILY LOG

Personnel

WE	William Esparza, CAL INC	Asbestos Project Monitor
PC	Pete Connell, CAL INC	Asbestos Project Designer and Manager
RP	Rob Peters, Chico Unified School District	Health and Safety Manager
KB	Kevin Bussard, West Coast Environmental	Asbestos Abatement Contractor
AR	Anthony Roybal, West Coast Environmental	Asbestos Abatement Supervisor

WEEK 7 - PRELIMINARY WORK

Tue	7/11/00	1400 - 1500	RP, WE and AR visit Bidwell Jr. High to conduct a precon meeting.
Thu	7/13/00	1200 - 1230	WE sets up pumps in the 100 Wing at Bidwell Jr. High for baseline sampling.
		1230 - 1515	WE runs baseline samples (B79, B80, B81 and B82) near the roof vents in the 100 Wing and 200 Wing at Bidwell Jr. High on the north exterior side, the boy's restroom, between classrooms 105A and 205 and on the south exterior side.

WEEK 8 - BIDWELL JR. HIGH

Mon	7/17/00	0700	Crew arrives at Chico Jr. High to tear down the containment because clearances for the Admin Wing arrived on 7/15/00.
		0700 - 1400	Crew tears down the containment in the Admin Wing at Chico Jr. High and loads all the equipment into the truck.
		1130 - 1330	WE travels from home to Bidwell Jr. High.
		1330 - 1400	WE and AR discuss the procedure for Bidwell Jr. High.
		1400 - 1500	Lunch Break
		1400 - 1530	WE brings all pumps and equipment from Chico Jr. High to Bidwell Jr. High.
		1500 - 1800	Crew begins to set up containments at the exterior roof vents north of the 100 Wing and in the restroom on the north side of the 100 Wing
		1600 - 1800	WE runs baseline samples (B83, B84, B85, B86 and B87) in the 200 Wing and 300 Wing.
		1630	Crew discovers that the shower will not fit through the door of the restroom. The decision to build the equipment room to the door way is made
		1730 - 1800	Crew cleans up and secures work area.
		1800	Crew departs Bidwell Jr. High
		1800 - 1815	WE travels from Bidwell Jr. High to hotel.

Tue 7/18/00

0645 - 0700 WE travels from hotel to Bidwell Jr. High
0700 Crew arrives at Bidwell Jr. High.
0700 - 1045 Crew continues to set up the two containments on the north side of the 100 Wing.
1045 - 1100 WE inspects both containments. The manometer reads -0.033" water gauge for the restroom containment and -0.045" water gauge for the exterior containment.
1100 Crew splits into three crews (A, B and C) of two workers each
1100 - 1140 Crew "A" consisting of two workers begins to remove the plaster from around the roof vents in the restroom in the 100 Wing.
1100 - 1140 Crew "B" consisting of two workers begins to remove the plaster from around the roof vents on the north exterior side of the 100 Wing.
1100 - 1140 Crew "C" consisting of two workers begins to set up the containment in Classroom 105A.
1130 - 1415 WE runs area samples (A80 and A81) outside the clean rooms of both containments and inside Classroom 105A.
1140 The fire alarm sounds for an unknown reason.
1140 - 1200 Crews shower out of the containments and exit the school grounds.
1200 - 1300 Lunch Break
1300 - 1545 Crew "A" continues to remove plaster from around the roof vents in the restroom in the 100 Wing.
1300 - 1730 Crew "B" continues to remove plaster from around the roof vents on the north exterior side of the 100 Wing.
1300 - 1730 Crew "C" continues to set up the containment in Classroom 105A.
1330 - 1600 WE runs baseline samples (B88, B89 and B90) in Classroom 405, the restroom and near the exterior roof vents in the 400 Wing.
1545 - 1550 WE visually inspects the containment in the restroom on the north side of the 100 Wing.
1550 - 1630 Crew "A" encapsulates the containment in the restroom in the 100 Wing.
1630 - 1700 Crew "A" seals up the containment in the restroom in the 100 Wing and removes the decontamination unit.
1700 - 1730 Crew "A" begins set up of the containment in the restroom on the south side of the 200 Wing.
1730 - 1745 WE, AR and RP discuss the arrangement of the decontamination unit for the restroom and exterior containments. Both containments will share the shower and clean room.
1730 - 1800 Crews clean up and secure work area.
1800 Crews depart Bidwell Jr. High
1800 - 1815 WE travels from Bidwell Jr. High to hotel.

Wed 7/19/00

0645 - 0700 WE travels from hotel to Bidwell Jr. High
0700 Crews arrive at Bidwell Jr. High.
0700 - 0800 WE and RP discuss problems with the Admin Wing of Chico Jr. High. Approximately 14 windows were broken, wall plaster that was supposed to remain was removed and wood strips on the ceiling are to be removed by WCE, Inc.
0700 - 1200 Crew "A" continues to set up the containment in the restroom on the south side of the 200 Wing.
0700 - 0810 Crew "B" begins to build the containment on the south exterior side the 200 Wing.
0700 - 1000 Crew "C" continues to set up the containment in classroom 105A.
0800 - 0810 WE visually inspects the containment on the north exterior side of the 100 Wing. Felt paper that is contaminated with plaster residue is still intact and needs to be removed.
0810 - 0900 Crew "B" removes the felt paper from the containment on the north exterior side the 100 Wing, encapsulates the containment and seals it up.
0900 - 1200 Crew "B" moves the decontamination unit to the south side of the 200 Wing so that both the containments for the restroom and the exterior roof vents can share the shower.
1010 - 1020 WE visually inspects the containment in Classroom 105A. The manometer reads -0.031" water gauge.
1020 - 1215 Crew "C" consisting of two workers removes the plaster ceiling from around the roof vents in classroom 105A.
1030 - 1300 WE runs area samples (A82 and A83) near the clean room in Classroom 105A and in Classroom 205.
1140 - 1340 WE runs clearance samples (C89, C90, C91, C92 and C93) in the containment on the north exterior side of the 100 Wing.
1200 - 1300 Lunch Break for Crews "A" and "B"
1200 - 1205 WE visually inspects the containment in Classroom 105A.
1205 - 1230 Crew "C" encapsulates and seals up the containment in Classroom 105A.
1230 - 1330 Lunch Break for Crew "C"
1300 - 1345 Crews "A" and "B" set up the decontamination unit outside the restroom and adjacent the exterior roof vents on the south side of the 200 Wing.
1330 - 1730 Crew "C" begins set up of the containment in Classroom 205.
1345 - 1400 WE inspects the containments for the restroom and exterior south side of the 200 Wing. The manometer read -0.023" water gauge.
1400 - 1600 WE runs clearance samples (C94, C95, C96, C97 and C98) in the containment in the restroom on the north side of the 100 Wing.

Wed 7/19/00
Continued

1400 - 1800 Crew "A" consisting of two workers removes the plaster ceiling from around the roof vents in the restroom on the south side of the 200 Wing.
1400 - 1800 Crew "B" consisting of two workers removes the plaster ceiling from around the roof vents on the south exterior side of the 200 Wing.
1420 - 1615 WE runs clearance samples (C99, C100, C101, C102 and C103) in the containment in Classroom 105A.
1500 - 1745 WE runs area samples (A84 and A85) outside the clean room on the south exterior side of the 200 Wing and in the corridor between Classrooms 205 and 250.
1730 - 1800 Crew "C" cleans up and secures work area.
1800 Crews depart Bidwell Jr. High
1800 - 1815 WE travels from Bidwell Jr. High to hotel.

Thu 7/20/00

0645 - 0700 WE travels from hotel to Bidwell Jr. High
0700 Crews arrive at Bidwell Jr. High.
0700 - 1200 Crew "A" sets up the containment in the restroom on the north side of the 300 Wing.
0700 - 1200 Crew "B" sets up the containment around the roof vents on the north exterior side of the 300 Wing.
0700 - 1200 Crew "C" sets up the containment in Classroom 205.
0800 - 0815 WE visually inspects the containments in the restroom and on the south exterior side of the 200 Wing.
0815 - 0900 One worker encapsulates the containments in the restroom and on the south exterior side of the 200 Wing.
1200 - 1300 Lunch Break
1300 Clearance results arrive for the restroom and the north exterior side of the 100 Wing. Classroom 105A has failed clearance.
1300 - 1330 Crew "C" cleans the containment in Classroom 105A and reencapsulates.
1300 - 1430 Crew "A" continues to set up the containment in the restroom on the north side of the 300 Wing.
1300 - 1430 Crew "B" continues to set up the containment on the north exterior side of the 300 Wing. The decontamination unit is removed from the 200 Wing and set up so that both the containments in the restroom and the on the exterior of the 300 Wing can share it.
1330 - 1500 Crew "C" continues to set up the containment in Classroom 205.
1420 - 1615 WE runs clearance samples (C104, C105, C106, C107 and C108) in the containment around the roof vents on the south exterior side of the 200 Wing.
1430 - 1435 WE inspects the containments in the restroom and the exterior north side of the 300 Wing. The manometer reads -0.045" water gauge.

Thu 7/20/00
Continued

1435 - 1630 WE runs clearance samples (C109, C110, C111, C112 and C113) in the containment in the restroom in the 200 Wing.

1445 - 1730 Crew "A" removes the plaster from around the roof vents in the restroom on the north side of the 300 Wing.

1445 - 1730 Crew "B" removes the plaster from around the roof vents on the north exterior side of the 300 Wing.

1450 - 1800 WE runs an area sample (A87) near the clean room on the north side of the 300 Wing.

1500 - 1510 WE inspects the containment in Classroom 205. The manometer reads -0.033" water gauge.

1510 - 1630 Crew "C" consisting of two workers removes the plaster ceiling from around the roof vents in Classroom 205.

1520 - 1645 WE runs an area sample (A86) near the clean room in Classroom 205.

1620 - 1640 The power breakers for all the containments start to trip. Power cords have to be rerouted in order to maintain negative pressure.

1630 - 1635 WE visually inspects the containment in Classroom 205.

1635 - 1645 Crew "C" encapsulates the containment in Classroom 205.

1645 - 1800 Crew "C" tears down the containments in the restroom and on the north exterior side of the 100 Wing.

1715 - 1725 WE visually inspects the containments in the restroom and on the north exterior side of the 300 Wing.

1800 - 1900 Crew cleans up and secures work area. All the waste that has accumulated so far at Bidwell Jr. High is placed in the restroom on the north exterior side of the 100 Wing for storage.

1845 - 1900 One crew worker encapsulates the containments in the restroom and on the north exterior side of the 300 Wing.

1900 Crew departs Bidwell Jr. High.

1900 - 2040 WE runs clearance samples again (C114, C115, C116, C117 and C118) in the containment in Classroom 105A.

1900 - 2040 WE runs clearance samples (C119, C120, C121, C122 and C123) in the containment in Classroom 205.

2040 - 2050 WE moves all the pumps from Classrooms 105A and 205 over to the north side of the 300 Wing.

2050 - 2230 WE runs clearance samples (C124, C125, C126, C127 and C128) in the containment around the roof vents on the north exterior side of the 300 Wing.

2050 - 2230 WE runs clearance samples (C129, C130, C131, C132 and C133) in the containment around the roof vents on the north exterior side of the 300 Wing.

2230 - 2300 WE puts away all pumps and equipment.

2300 - 0100 WE travels from Bidwell Jr. High to Asbestech to home.

WEEK 9 - BIDWELL JR. HIGH

Mon 7/24/00

0500 - 0700 WE travels from home to Bidwell Jr. High
0700 Crew arrives at Bidwell Jr. High.

0700 - 0800 Crew "C" tears down the containment in Classroom 105A.

0700 - 1200 Crew "A" sets up a containment in the restroom of the 400 Wing.

0700 - 1200 Crew "B" sets up a containment on the south exterior side of the 400 Wing.

0800 - 1200 Crew "C" sets up a containment in Classroom 250.

1200 - 1300 Lunch Break

1300 - 1530 Crew "A" continues to set up the containment in the restroom in the 400 Wing.

1300 - 1530 Crew "B" continues to set up the containment on the south exterior side of the 400 Wing.

1300 - 1700 Crew "C" continues to set up the containment in Classroom 250.

1530 - 1545 WE inspects the containments in the restroom and on the south exterior side of the 400 Wing. The manometer reads -0.028" water gauge.

1530 - 1800 Crew "A" begins to set up the containment in Classroom 405A

1530 - 1800 Crew "B" tears down the containment in Classroom 205 and brings the equipment to Classroom 405A..

1700 - 1715 WE inspects the containment in Classroom 250. The manometer reads -0.023" water gauge.

1715 - 1800 Crew "C" begins to set up the containment in Classroom 305A.

1800 Crews depart Bidwell Jr. High

1800 - 1815 WE travels from Bidwell Jr. High to hotel.

Tue 7/25/00

0645 - 0700 WE travels from hotel to Bidwell Jr. High
0700 Crew arrives at Bidwell Jr. High.

0700 - 0740 Crew "A" makes final adjustments to the containment in the restroom in the 400 Wing.

0700 - 0800 Crew "B" makes final adjustments to the containment on the south exterior side of the 400 Wing.

0700 - 0815 Crew "C" makes final adjustments to the containment in Classroom 250.

0740 - 1000 Crew "A" removes the plaster ceiling from around the roof vents in the restroom in the 400 Wing.

0800 - 1100 Crew "B" removes the plaster ceiling from around the roof vents on the exterior south side of the 400 Wing.

0815 - 1100 Crew "C" removes the plaster ceiling from around the roof vents in Classroom 250.

Tue 7/25/00
Continued

0830 - 1030 WE runs area samples (A88 and A89) outside the clean rooms of both containments on the south exterior side of the 400 Wing and in Classroom 250.

1000 - 1200 Crew "A" continues to set up the containment in Classroom 405A.

1050 - 1100 WE visually inspects the containment in Classroom 250.

1100 - 1120 Crew "C" encapsulates the containment in Classroom 250.

1105 - 1115 WE visually inspects the containments in the restroom and the south exterior side of the 400 Wing.

1115 - 1200 Crew "B" encapsulates the containments in the restroom and the south exterior side of the 400 Wing.

1120 - 1200 Crew "C" begins to set up the containment in Classroom 305A.

1150 - 1400 WE runs clearance samples (C134, C135, C136, C137 and C138) in the containment in Classroom 250.

1200 - 1300 Lunch Break

1215 - 1430 WE runs clearance samples (C139, C140, C141, C142 and C143) in the containment on the south exterior side of the 400 Wing.

1300 - 1540 Crew "A" continues to set up the containment in Classroom 405A.

1300 - 1600 Crews "B" and "C" continue to set up the containment in Classroom 305A. The air handler on the roof is removed and the hole is covered with plywood.

1530 - 1720 WE runs clearance samples (C144, C145, C146, C147 and C148) in the containment in the restroom in the 400 Wing.

1540 - 1550 WE inspects containment in Classroom 405A. The manometer reads -0.045" water gauge.

1550 - 1800 Crew "A" removes the ceiling plaster from around the roof vents in Classroom 405A.

1600 - 1610 WE inspects containment in Classroom 305A. The manometer reads -0.037" water gauge.

1610 - 1800 Crew "B" removes the ceiling plaster from around the roof vent in Classroom 305A.

1630 - 1730 WE runs area samples (A90 and A91) near the clean rooms in Classrooms 305A and 405A.

1730 - 1830 Electrical problems occur and breakers are tripping. The negative air machines in all containments are going off until a new outlets can be located.

1835 - 1840 WE inspects the containment in Classroom 405A. Minor work around the cut edges is needed.

1840 - 1900 One worker cleans up the edges and encapsulates the containment in Classroom 405A.

1845 - 1850 WE inspects the containment in Classroom 305A.

1845 - 1915 The negative air machine in Classroom 405A is off due to electrical problems.

Tue 7/25/00 Continued	1850 - 1915	One worker encapsulates the containment in Classroom 305A.
	1845 - 1915	Crew cleans up and secures work area.
	1915	Crew departs Bidwell Jr. High
	1920 - 2130	WE runs clearance samples (C149, C150, C151, C152 and C153) in the containment in Classroom 305A.
	1930 - 2145	WE runs clearance samples (C154, C155, C156, C157 and C158) in the containment in Classroom 405A.
	2145 - 2200	WE loads all pumps and equipment into truck.
	2200 - 2400	WE travels from Bidwell Jr. High to Asbestech and home.
Wed 7/26/00	0700	Crew arrives at Chico Jr. High
	0700 - 0800	The dumpster is transported from Chico Jr. High to Bidwell Jr. High.
	0800 - 0830	Crew of two workers moves all stored waste into dumpster.
	0830 - 1500	Crew tears down containments that have already been cleared.
	1030	Clearance results arrive. The containments in Classroom 250 and the 400 Wing Restrooms failed clearance.
	1030 - 1230	WE travels from home to Bidwell Jr. High.
	1230 - 1430	WE sets up all pumps and equipment for clearance sampling
	1100 - 1300	AR recleans, changes the filters and reencapsulates the containment in Classroom 250.
	1300 - 1500	AR recleans, changes the filters and reencapsulates the containment in the 400 Wing Restroom.
	1430 - 1630	WE runs clearance samples (C159, C160, C161, C162 and C163) in Classroom 250. One sample (C164) is taken outside the clean room of the containment.
	1500 - 1600	Crew takes lunch break.
	1500 - 1700	WE runs clearance samples (C165, C166, C167, C168 and C169) in the 400 Wing Restroom. One sample (C170) is taken outside the clean room of the containment.
	1600 - 1800	Crew loads all equipment and thoroughly cleans job site.
	1700 - 1730	WE puts away all pumps and equipment
	1730 - 1930	WE travels from Bidwell Jr. High to home.
Thu 7/27/00	1800	Crew departs Bidwell Jr. High
	0800 - 0830	WE delivers samples to Asbestech
	0830 - 1700	WE writes final report for Chico Unified School District
	1030	Clearance results arrive.
Fri 7/28/00	1030 - 1400	Crew tears down containments in Classroom 250 and the 400 Wing Restroom.
	0800 - 1700	WE writes final report for Chico Unified School District

Date: 7/13/00

Party Requesting Analysis: WILLIAM ESPARZA

Project Identification: (5403) JR. HIGH

Project Number 210WELL Project Name

Analysis Requested: PCM

Turnaround Requested: 2hr 24hr 48hr

Sample ID #	Sample Type	Location/Description For personal, indicate name and S.S.N.	Time On	Time Off	Total Minutes	Flow Rate Pre	Flow Rate Post	Average Flow Rate	Volume min x flow	Results	TWA
5403-B79	BASE	NORTH EXT. SIDE - 100 WING	1232	1512	160	12.62	12.66	12.64	2022.40		
5403-B80	BASE	BOYS RESTROOM - 100 WING	1233	1513	160	12.62	12.16	12.39	1982.40		
5403-B81	BASE	CLASSROOM - 105A AND 205 105A AND 205	1234	1514	160	12.62	12.66	12.64	2022.40		
5403-B82	BASE	SOUTH EXT. SIDE - 200 WING	1235	1515	160	12.62	12.66	12.64	2022.40		

Special Instructions

SIGNATURES (Name, Firm)

- Relinquished by: William E CA, INC Date: 7/14/00 Time: 5:30 2200
Received by: _____ Date: _____ Time: _____
- Relinquished by: _____ Date: _____ Time: _____
Received by: _____ Date: _____ Time: _____
- Relinquished by: _____ Date: _____ Time: _____
Received by: _____ Date: _____ Time: _____

CHAIN OF CUSTODY

ASBESTOS/LEAD AIR MONITORING DATA SHEET

Date:

7/17/90

Party Requesting Analysis:

WILLIAM ESPARZA

Project Identification:

(5403) JR. HIGH
Project Number 610W6LL Project Name

Analysis Requested:

PCM

Turnaround Requested:

2hr ☒ 24hr ☐ 48hr

Sample ID #	Sample Type	Location/Description For personal, indicate name and S.S.N.	Time On	Time Off	Total Minutes	Flow Rate Pre	Flow Rate Post	Average Flow Rate	Volume min x flow	Results	TWA
5403-883	BASÉ	200 WING RESTROOM	1603	1800	117	12.64	12.64	12.64	1478.88		
5403-884	BASÉ	Room 250	1604	1801	117	12.64	12.64	12.64	1478.88		
5403-885	BASÉ	Room 305A	1605	1802	117	12.64	12.64	12.64	1478.88		
5403-886	BASÉ	300 WING - RESTROOM	1606	1803	117	12.64	12.64	12.64	1478.88		
5403-887	BASÉ	300 WING - EXTERIOR	1607	1804	117	12.64	12.64	12.64	1478.88		

Special Instructions

SIGNATURES (Name, Firm)

1. Relinquished by:

Received by:

2. Relinquished by:

Received by:

3. Relinquished by:

Received by:

William Esparza *CAI INC*

Date: 7/19/90 Time: 1630

Date: Time:

Date: Time:

Date: Time:

Date: Time:

Date: Time:

CHAIN OF CUSTODY

ASBESTOS/LEAD AIR MONITORING DATA SHEET

Date:

7/18/00

Party Requesting Analysis:

WILLIAM ESPARZA

Project Identification:

(5403) BIDDWELL JR. HIGH

Project Number BIDDWELL Project Name

Analysis Requested:

PCM

Turnaround Requested:

2hr X 24hr 48hr

Sample ID #	Sample Type	Location/Description For personal, indicate name and S.S.N.	Time On	Time Off	Total Minutes	Flow Rate Pre Post	Average Flow Rate	Volume min x flow	Results	TWA
5403-B88	BASE	CLASSROOM 405	1343	1557	119	12.62 12.65	12.64	1504.16		
5403-B89	BASE	400 WING - RESTROOM	1344	1558	119	12.62 12.65	12.64	1504.16		
5403-B90	BASE	400 WING - EXTERIOR	1345	1559	119	12.62 12.65	12.64	1504.16		

Special Instructions

SIGNATURES (Name, Firm)

1. Relinquished by:

Received by:

2. Relinquished by:

Received by:

3. Relinquished by:

Received by:

Date: 7/19/00 Time: 1630

Date: _____ Time: _____

Date: _____ Time: _____

Date: _____ Time: _____

Date: _____ Time: _____

Date: _____ Time: _____

ASBESTECH
6825 Fair Oaks Blvd., Suite 103
Carmichael, California 95608
Tel.(916) 481-8902 Fax (916) 481-3975

Client:
Cal Inc
2040 Peabody Road
Vacaville, Ca 95687

Job:
5403
Bidwell Jr. High

FIBER COUNT ANALYSIS REPORT

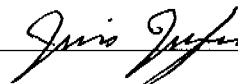
LAB JOB # 34959
Date Received: 7/17/00

PAT # 101801
Date Reported: 7/18/00

<u>Date</u>	<u>Sample No.</u>	<u>Liters/Min.</u>	<u>Time Min.</u>	<u>Fibers</u>	<u>Fields</u>	<u>Fibers/CC</u>	<u>Det.Limit</u>	<u>TWA</u>
7/13/00 North ext. side 100 Wing	5403-B79	12.64	160	16.0	100	0.004	0.002	
7/13/00 Boys Restroom 100 Wing	5403-B80	12.39	160	5.0	100	<0.002	0.002	
7/13/00 Classroom 100 Wing	5403-B81	12.64	160	15.0	100	0.004	0.002	
7/13/00 South side ext. 100 Wing	5403-B82	12.64	160	4.0	100	<0.002	0.002	

THE ANALYSIS USES PHASE CONTRAST MICROSCOPY AS DESCRIBED IN NIOSH METHOD 7400A. SAMPLES WERE NOT COLLECTED BY ASBESTECH. THIS REPORT MUST NOT BE REPRODUCED EXCEPT IN FULL WITH THE APPROVAL OF ASBESTECH. THIS REPORT RELATES ONLY TO THE ITEMS TESTED. ASBESTECH ACCEPTS TECHNICAL RESPONSIBILITY FOR THIS REPORT AND DATE OF ISSUE.

ANALYST SIGNATURE



ASBESTECH
6825 Fair Oaks Blvd., Suite 103
Carmichael, California 95608
Tel.(916) 481-8902 Fax (916) 481-3975

Client:
Cal Inc
2040 Peabody Road
Vacaville, Ca 95687

Job:
5403
Bidwell Jr. High

FIBER COUNT ANALYSIS REPORT

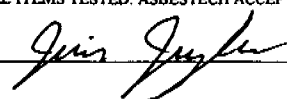
LAB JOB # 35033
Date Received: 7/20/00

PAT # 101801
Date Reported: 7/21/00

<i>Date</i>	<i>Sample No.</i>	<i>Liters/Min.</i>	<i>Time Min.</i>	<i>Fibers</i>	<i>Fields</i>	<i>Fibers/CC</i>	<i>Det.Limit</i>	<i>TWA</i>
7/17/00	5403-B83	12.64	117	11.5	100	0.004	0.002	
200 Wing Restroom								
7/17/00	5403-B84	12.64	117	15.5	100	0.005	0.002	
Room 250								
7/17/00	5403-B85	12.64	117	10.0	100	0.003	0.002	
Room 305A								
7/17/00	5403-B86	12.64	117	5.0	100	<0.002	0.002	
300 Wing Restroom								
7/17/00	5403-B87	12.64	117	6.0	100	0.002	0.002	
300 Wing Exterior								

THE ANALYSIS USES PHASE CONTRAST MICROSCOPY AS DESCRIBED IN NIOSH METHOD 7400A. SAMPLES WERE NOT COLLECTED BY ASBESTECH. THIS REPORT MUST NOT BE REPRODUCED EXCEPT IN FULL WITH THE APPROVAL OF ASBESTECH. THIS REPORT RELATES ONLY TO THE ITEMS TESTED. ASBESTECH ACCEPTS TECHNICAL RESPONSIBILITY FOR THIS REPORT AND DATE OF ISSUE.

ANALYST SIGNATURE



ASBESTECH
6825 Fair Oaks Blvd., Suite 103
Carmichael, California 95608
Tel.(916) 481-8902 Fax (916) 481-3975

Client:

Cal Inc
2040 Peabody Road
Vacaville, Ca 95687

Job:

5403
Bidwell Jr. High

FIBER COUNT ANALYSIS REPORT

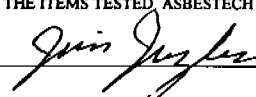
LAB JOB # 35034
Date Received: 7/20/00

PAT # 101801
Date Reported: 7/21/00

<u>Date</u>	<u>Sample No.</u>	<u>Liters/Min.</u>	<u>Time Min.</u>	<u>Fibers</u>	<u>Fields</u>	<u>Fibers/CC</u>	<u>Det.Limit</u>	<u>TWA</u>
7/18/00	5403-B88	12.64	134	8.0	100	0.002	0.002	
Classroom 405								
7/18/00	5403-B89	12.64	134	15.0	100	0.004	0.002	
400 Wing Restroom								
7/18/00	5403-B90	12.64	134	5.0	100	<0.002	0.002	
400 Wing Exterior								

THE ANALYSIS USES PHASE CONTRAST MICROSCOPY AS DESCRIBED IN NIOSH METHOD 7400A. SAMPLES WERE NOT COLLECTED BY ASBESTECH. THIS REPORT MUST NOT BE REPRODUCED EXCEPT IN FULL WITH THE APPROVAL OF ASBESTECH. THIS REPORT RELATES ONLY TO THE ITEMS TESTED. ASBESTECH ACCEPTS TECHNICAL RESPONSIBILITY FOR THIS REPORT AND DATE OF ISSUE.

ANALYST SIGNATURE



ASBESTECH
6825 Fair Oaks Blvd., Suite 103
Carmichael, California 95608
Tel.(916) 481-8902 Fax (916) 481-3975

Client:

Cal Inc
2040 Peabody Road
Vacaville, Ca 95687

Job:

5403
Bidwell Jr. High

FIBER COUNT ANALYSIS REPORT

LAB JOB # 35110
Date Received: 7/26/00

PAT # 101801
Date Reported: 7/27/00

<u>Date</u>	<u>Sample No.</u>	<u>Liters/Min.</u>	<u>Time Min.</u>	<u>Fibers</u>	<u>Fields</u>	<u>Fibers/CC</u>	<u>Det.Limit</u>	<u>TWA</u>
7/25/00	5403-A88	12.72	126	4.0	100	<0.002	0.002	
Near Clean Rm. 400 Wing Ext								
7/25/00	5403-A89	12.72	128	29.0	100	0.009	0.002	
Near Clean Rm. Class 250								
7/25/00	5403-A90	12.76	59	24.0	100	0.016	0.004	
Near Clean Rm. Class 405A								
7/25/00	5403-A91	12.76	57	25.0	100	0.017	0.004	
Near Clean Rm. Class 305A								

THE ANALYSIS USES PHASE CONTRAST MICROSCOPY AS DESCRIBED IN NIOSH METHOD 7400A. SAMPLES WERE NOT COLLECTED BY ASBESTECH. THIS REPORT MUST NOT BE REPRODUCED EXCEPT IN FULL WITH THE APPROVAL OF ASBESTECH. THIS REPORT RELATES ONLY TO THE ITEMS TESTED. ASBESTECH ACCEPTS TECHNICAL RESPONSIBILITY FOR THIS REPORT AND DATE OF ISSUE.

ANALYST SIGNATURE

Jim J...

CON

2hr	24hr	48hr
-----	-----------------	------

Received by:

CHAIN OF CUSTODY

ASBESTOS/LEAD AIR MONITORING DATA SHEET

INC

Date:

7/19/00

Party Requesting Analysis:

WILLIAM ESPARZA

Project Identification:

(5403) JR. HIGH

Analysis Requested:

PCM

Turnaround Requested:

2hr ☒ 24hr 48hr

Sample ID #	Sample Type	Location/Description For personal, indicate name and S.S.N.	Time On	Time Off	Total Minutes	Flow Rate Pre Post	Average Flow Rate	Volume min x flow	Results	TWA
5403-A82	AREA	CLASSROOM 105A - CLEAN RM	1042	1250	128	12.62 12.66	12.64	1617.92		
5403-A83	AREA	CLASSROOM 205	1043	1251	128	12.62 12.66	12.64	1617.92		
5403-A84	AREA	200 WING - EXTERIOR	1504	1746	162	12.72 12.74	12.73	2062.26		
5403-A85	AREA	CLASSROOM 205	1505	1747	162	12.72 12.74	12.73	2062.26		

Special Instructions

SIGNATURES (Name, Firm)

1. Relinquished by:

Will Esparza CA INC

Date: 7/20/00 Time: 2300

Received by:

Date: Time:

2. Relinquished by:

Date: Time:

Received by:

Date: Time:

3. Relinquished by:

Date: Time:

Received by:

Date: Time:

INC

7/20/00

WILLIAM ESPARZA

(5403) ~~6000~~ JR. HIGH

Analysis Requested:

Turnaround Requested:

	2hr	24hr	48hr
2hr			
24hr			
48hr			

Special Instructions

SIGNATURES (Name, Firm)

1. Relinquished by:

Received by:

2. Relinquished by:

Received by:

3. Relinquished by:

Received by:

Date: 7/20/00 Time: 7:30

Date: _____ Time: _____

Date: _____ Time: _____

Date: _____ Time: _____

Date: _____ Time: _____

Date: _____ Time: _____

Date:

Party Requesting Analysis:

Project Identification:

7/25/00

WILLIAM ESPARZA

5403) ~~██████████~~ JR. HIGH

Project Number	Project Name
BIDWELL	

Analysis Requested:

Turnaround Requested:

2hr	24hr	48hr
-----	------	------

48hr

[illegible]

Special Instructions

SIGNATURES (Name, Firm)

1. Relinquished by:

Received by:

2. Relinquished by:

Received by:

3. Relinquished by:

Received by:

Will CAC INC

Date: 7/25/60Time: 2:00

Date: _____

Index

Date: _____

Time:

Date: _____

Time:

Date: _____

Time:

Date: _____

Time:

ASBESTECH
6825 Fair Oaks Blvd., Suite 103
Carmichael, California 95608
Tel.(916) 481-8902 Fax (916) 481-3975

Client:
Cal Inc
2040 Peabody Road
Vacaville, Ca 95687

Job:
5403
Bidwell Jr. High

FIBER COUNT ANALYSIS REPORT

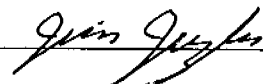
LAB JOB # 35035
Date Received: 7/20/00

PAT # 101801
Date Reported: 7/21/00

<u>Date</u>	<u>Sample No.</u>	<u>Liters/Min.</u>	<u>Time Min.</u>	<u>Fibers</u>	<u>Fields</u>	<u>Fibers/CC</u>	<u>Det.Limit</u>	<u>TWA</u>
7/18/00	5403-A80	12.35	102	32.0	100	0.012	0.002	
Near Clean Room								
7/18/00	5403-A81	12.35	102	15.0	100	0.006	0.002	
Classroom 105A								

THE ANALYSIS USES PHASE CONTRAST MICROSCOPY AS DESCRIBED IN NIOSH METHOD 7400A. SAMPLES WERE NOT COLLECTED BY ASBESTECH. THIS REPORT MUST NOT BE REPRODUCED EXCEPT IN FULL WITH THE APPROVAL OF ASBESTECH. THIS REPORT RELATES ONLY TO THE ITEMS TESTED. ASBESTECH ACCEPTS TECHNICAL RESPONSIBILITY FOR THIS REPORT AND DATE OF ISSUE.

ANALYST SIGNATURE



ASBESTECH
6825 Fair Oaks Blvd., Suite 103
Carmichael, California 95608
Tel.(916) 481-8902 Fax (916) 481-3975

RECEIVED
JUL 27 2000

Client:
Cal Inc
2040 Peabody Road
Vacaville, Ca 95687

Job:
5403
Bidwell Jr. High

FIBER COUNT ANALYSIS REPORT

LAB JOB # 35048
Date Received: 7/21/00

PAT # 101801
Date Reported: 7/21/00

<u>Date</u>	<u>Sample No.</u>	<u>Liters/Min.</u>	<u>Time Min.</u>	<u>Fibers</u>	<u>Fields</u>	<u>Fibers/CC</u>	<u>Det.Limit</u>	<u>TWA</u>
7/20/00 Classroom 205	5403-A86	12.76	84	3.5	100	<0.003	0.003	
7/20/00 N. side of 300 Wing	5403-A87	12.25	188	10.0	100	0.002	0.002	

THE ANALYSIS USES PHASE CONTRAST MICROSCOPY AS DESCRIBED IN NIOSH METHOD 7400A. SAMPLES WERE NOT COLLECTED BY ASBESTECH. THIS REPORT MUST NOT BE REPRODUCED EXCEPT IN FULL WITH THE APPROVAL OF ASBESTECH. THIS REPORT RELATES ONLY TO THE ITEMS TESTED. ASBESTECH ACCEPTS TECHNICAL RESPONSIBILITY FOR THIS REPORT AND DATE OF ISSUE.

ANALYST SIGNATURE



CHAIN OF CUSTODY

ASBESTOS/LEAD AIR MONITORING DATA SHEET

Date:

7/19/00

Party Requesting Analysis:

WILLIAM ESPARZA

Project Identification:

(5403) ~~ESPARZA~~ JR. HIGH

Analysis Requested:

PCN

Turnaround Requested:

X 24hr

24hr 48hr

Sample ID #	Sample Type	Location/Description For personal, indicate name and S.S.N.	Time On	Time Off	Total Minutes	Flow Rate Pre Post	Average Flow Rate	Volume min x flow	Results	TWA
5403-C94	CLEAR	100 WING - RR	1405	1544	99	14.68 14.71	14.70	1455.30		
5403-C95	CLEAR	100 WING - RR	1406	1545	99	14.68 14.71	14.70	1455.30		
5403-C96	CLEAR	100 WING - RR	1407	1546	99	14.68 14.71	14.70	1455.30		
5403-C97	CLEAR	100 WING - RR	1408	1547	99	14.68 14.71	14.70	1455.30		
5403-C98	CLEAR	100 WING - RR	1409	1548	99	14.68 14.71	14.70	1455.30		

Special Instructions

RUSH

SIGNATURES (Name, Firm)

1. Relinquished by:

Received by:

2. Relinquished by:

Received by:

3. Relinquished by:

Received by:

Date: 7/19/00

Date: _____

Date: _____

Date: _____

Date: _____

Date: _____

Time: 1630

Time: _____

Time: _____

Time: _____

Time: _____

Time: _____

INC

7/19/00

WILLIAM ESPARZA

(5403) ~~444444~~ JR. HIGH

Project Number	Project Name
B10WEL	

20

$$\frac{242}{x}$$

48hr

[illegible]

25H

SIGNATURES (Name, Firm)

Will E. ~~for me~~

Received by:

Date: 7/19/00

Time: 1630

2. Relinquished by:

Date: _____

Time:

Relinquished by:

Date: _____

Time:

Received by:

Date: _____

Time:

3. Relinquished by:

Date: _____

Time:

Received by:

Date:

Time:

CHAIN OF CUSTODY

ASBESTOS/LEAD AIR MONITORING DATA SHEET

Date:

7/20/00

Party Requesting Analysis:

WILLIAM ESPARZA

Project Identification:

(5403) GUNDO JR. HIGH

Project Number GDWELL Project Name

Analysis Requested:

PCM

Turnaround Requested:

(X) 2hr 24hr 48hr

INC

Sample ID #	Sample Type	Location/Description For personal, indicate name and S.S.N.	Time On	Time Off	Total Minutes	Flow Rate Pre Post	Average Flow Rate	Volume min x flow	Results	TWA
5403-C04	CLEAR	200 WING - EXTERIOR	1424	1611	107	14.74 14.82	14.78	1581.46		
5403-C05	CLEAR	200 WING - EXTERIOR	1425	1612	107	14.74 14.82	14.78	1581.46		
5403-C06	CLEAR	200 WING - EXTERIOR	1426	1613	107	14.74 14.82	14.78	1581.46		
5403-C07	CLEAR	200 WING - EXTERIOR	1427	1614	107	14.74 14.82	14.78	1581.46		
5403-C08	CLEAR	200 WING - EXTERIOR	1428	1615	107	14.74 14.82	14.78	1581.46		

Special Instructions

SIGNATURES (Name, Firm)

1. Relinquished by:

Will Esp CA INC

Received by:

Date: 7/20/00 Time: 2300

2. Relinquished by:

Received by:

Date: _____ Time: _____

3. Relinquished by:

Received by:

Date: _____ Time: _____

Relinquished by:

Received by:

Date: _____ Time: _____

Relinquished by:

Received by:

Date: _____ Time: _____

CHAIN OF CUSTODY

ASBESTOS/LEAD AIR MONITORING DATA SHEET

INC

Date:

7/20/00

Party Requesting Analysis:

WILLIAM ESPARZA

Project Identification:

(5403) CHAN JR. HIGH

Analysis Requested:

PCN

Turnaround Requested:

(22hr) 24hr 48hr

Sample ID #	Sample Type	Location/Description For personal, indicate name and S.S.N.	Time On	Time Off	Total Minutes	Flow Rate Pre Post	Average Flow Rate	Volume min x flow	Results	TWA
5403-C109	CLEAR	200 WING - RESTROOM	1436	1619	103	14.74 14.82	14.78	1522.34		
5403-C110	CLEAR	200 WING - RESTROOM	1437	1620	103	14.74 14.82	14.78	1522.34		
5403-C111	CLEAR	200 WING - RESTROOM	1438	1621	103	14.74 14.82	14.78	1522.34		
5403-C112	CLEAR	200 WING - RESTROOM	1439	1622	103	14.74 14.82	14.78	1522.34		
5403-C113	CLEAR	200 WING - RESTROOM	1440	1623	103	14.74 14.82	14.78	1522.34		

Special Instructions

SIGNATURES (Name, Firm)

1. Relinquished by:

Will Esp

Date: 7/20/00

Time: 2350

Received by:

Date:

Time:

2. Relinquished by:

Date:

Time:

Received by:

Date:

Time:

3. Relinquished by:

Date:

Time:

Received by:

Date:

Time:

CHAIN OF CUSTODY

ASBESTOS/LEAD AIR MONITORING DATA SHEET

Date:

7/20/00

Party Requesting Analysis:

WILLIAM ESPARZA

Project Identification:

(5403) ~~CHURCH~~ JR. HIGH

Project Number B1002ELL Project Name

Analysis Requested:

Turnaround Requested:

PCN
24hr 48hr

Sample ID #	Sample Type	Location/Description For personal, indicate name and S.S.N.	Time On	Time Off	Total Minutes	Flow Rate Pre Post	Average Flow Rate	Volume min x flow	Results	TWA
5403-C114	CLEAR	CLASSROOM 105A	1900	2030	90	15.78 15.76	15.77	1419.30		
5403-C115	CLEAR	CLASSROOM 105A	1901	2031	90	15.78 15.76	15.77	1419.30		
5403-C116	CLEAR	CLASSROOM 105A	1902	2032	90	15.78 15.76	15.77	1419.30		
5403-C117	CLEAR	CLASSROOM 105A	1903	2033	90	15.78 15.76	15.77	1419.30		
5403-C118	CLEAR	CLASSROOM 105A	1904	2034	90	15.78 15.76	15.77	1419.30		

Special Instructions

SIGNATURES (Name, Firm)

1. Relinquished by:

Received by:

2. Relinquished by:

Received by:

3. Relinquished by:

Received by:

Will Esp CA INC

Date: 7/20/00 Time: 2300

Date: _____ Time: _____

Date: _____ Time: _____

Date: _____ Time: _____

Date: _____ Time: _____

Date: _____ Time: _____

CHAIN OF CUSTODY

ASBESTOS/LEAD AIR MONITORING DATA SHEET

Date:

7/20/00

Party Requesting Analysis:

WILLIAM ESPARZA

Project Identification:

(5403) ~~CLARK JR. HIGH~~

Project Number BIDWELL Project Name

Analysis Requested:

Turnaround Requested:

(x) 2hr 24hr 48hr

PCM

Sample ID #	Sample Type	Location/Description For personal, indicate name and S.S.N.	Time On	Time Off	Total Minutes	Flow Rate Pre Post	Average Flow Rate	Volume min x flow	Results	TWA
5403-C109	CLEAR	CLASSROOM 205	1905	2035	90	15.78 15.76	15.77	1419.30		
5403-C110	CLEAR	CLASSROOM 205	1906	2036	90	15.78 15.76	15.77	1419.30		
5403-C111	CLEAR	CLASSROOM 205	1907	2037	90	15.78 15.76	15.77	1419.30		
5403-C112	CLEAR	CLASSROOM 205	1908	2038	90	15.78 15.76	15.77	1419.30		
5403-C113	CLEAR	CLASSROOM 205	1909	2039	90	15.78 15.76	15.77	1419.30		

Special Instructions

SIGNATURES (Name, Firm)

1. Relinquished by:

Received by:

2. Relinquished by:

Received by:

3. Relinquished by:

Received by:

Will Sp *CAL INC*

Date: 7/20/00 Time: 2300

Date: Time:

Date: Time:

Date: Time:

Date: Time:

Date: Time: