

**SIX MONTH SURVEILLANCE  
HOMOGENEOUS ACBM RECORDS**

Date of Inspection: 12/05/2001

District: Chico Unified School District

Inspector: Robert Peters

School: Chapman Elementary School

Building: A

Material Class	Material	Homo. Mat. #	% Asb.	F <sup>2</sup> /L.F.	Location	Condition: Code & Comments	Friable Yes/No
M	9" VFT		10-15%	UNDETERMINED	KITCHEN BROWN	(1) (4) PREVIOUSLY ROOM 5. (12/05/01 Same)	N

School: Chapman Elementary School

Building: B

Material Class	Material	Homo. Mat. #	% Asb.	F <sup>2</sup> /L.F.	Location	Condition: Code & Comments	Friable Yes/No
M	TRANSITE PANELS		ASSUMED	UNDETERMINED	EXTERIOR	(1) (4) (12/05/01 Same)	N

CONDITION CODE

General Condition: (1) Good (2) Damaged (3) Significantly Damaged (25% or more)  
Change in Condition: (4) No (5) Yes (If Yes, explain under comments)  
Abated: (6) Repaired (7) Removed (8) Encapsulated (9) Enclosed (10) Isolated & Restricted  
Miscellaneous: (11) Inaccessible, no inspection data (12) Other (Explain under comments) (13) Non-Asbestos/Not Inspected

**CONSULT ORIGINAL AND SUPPLEMENTARY INSPECTION REPORTS FOR MATERIALS WITH TRACE AMOUNTS OF ASBESTOS**

*HMS, Inc.*  
HAZARD MANAGEMENT SERVICES, INC.

---

September 28, 2001

Mr. Rob Peters  
Chico Unified School District  
1163 E. Seventh Street  
Chico, CA 95928

RE: Fourth Triennial AHERA Three-Year Reinspection

Dear Mr. Peters:

Enclosed is the data obtained from the fourth AHERA three-year reinspections Hazard Management Services, Inc. (HMS, Inc.) conducted between May 1, 2001 and May 2, 2001. The documents included with this letter are the "Three-Year Reinspection Homogeneous ACBM Material Records" covering all buildings known from the original inspection to contain ACBM. The sites inspected were Chapman Elementary, Chico Senior High, and Citrus Elementary Schools. After Chapman and Citrus Elementary Schools were inspected, HMS, Inc. had the files for these sites stolen. The information for these two sites were recreated using the prior six month surveillance reports conducted by the District. With these reports, this completes the Three-Year Reinspections as contracted with Chico Unified School District.

You should review the updated Homogeneous Materials Reports to familiarize yourself with the current status of asbestos containing materials and identified suspect asbestos materials. It is the District's responsibility to assure that the school's site copy of the Management Plan is up to date and consistent with the District's Management Plan for that site. This is very important, and if not done, can cause the District to be penalized during an EPA site visit or investigation.

HMS, Inc. wants to remind you that materials containing "trace" amounts of asbestos must be considered in the event of renovations or demolitions. Although building materials containing trace amounts of asbestos (<1%) are not regulated under EPA, Cal/OSHA does regulate work practices with materials containing 0.1% asbestos. The original AHERA inspection contains information regarding materials with trace amounts of asbestos.

When you provide your annual notification to parents and staff, include information regarding this three-year reinspection. Enclosed is a suggested format for your notification letter. Please note that you must include in your Management Plans a description of the steps you take to notify. It is also important that your Management Plans be updated after any and all actions conducted which impact asbestos containing materials.

Please remember that HMS, Inc. did not inspect new buildings or portable classrooms which were placed on the District sites since the original EPA AHERA inspection. It is the District's responsibility to obtain letters of certification from the Architect, Construction Superintendent, or manufacturer of new building materials, indicating there is no asbestos in the new buildings (constructed after October 12, 1988) or new building materials. A copy of these certification letters must be included in your Management Plans, both at the school site and at the LEA Designees office site. It is still required of School Districts to send a copy of these certification letters to the US EPA AHERA unit; Region IX in San Francisco.

---

4200 Rocklin Rd., Ste. 11A  
Rocklin, CA 95677  
(916) 632-6800  
(916) 632-6841 Fax

367 Civic Drive, Ste. 7  
Pleasant Hill, CA 94523-5501  
(925) 363-3442  
(925) 363-7897 Fax

P.O. Box 576848  
Modesto, CA 95357-6848  
(209) 551-2000  
(209) 575-5657 Fax

371 E. Bullard Ave., Ste. 109  
Fresno, CA 93710  
(559) 436-0277  
(559) 436-0279 Fax

P.O. Box 21471  
Bakersfield, CA 93390  
(661) 588-5551  
(661) 588-3827 Fax

Mr. Rob Peters  
Chico Unified School District  
September 28, 2001  
Page Two

It is not necessary to send a copy of the three-year reinspection to the OPSC or EPA. However, the report should be included in your Management Plan. I want to thank you for your cooperation. If you have any questions, please feel free to contact me at (916) 632-6800.

Sincerely,

*Douglas R. Colley (1kb)*

Douglas R. Colley  
Certified Asbestos Consultant  
DOSH #92-0222

Enclosures  
A:\FINAL.LETTER.wpd

Following is a suggested letter to district personnel, building occupants, and parents in order to meet the AHERA requirement of annual notification. Whatever notification you use, you put a dated, signed copy in the Management Plan. You must also include in the Management Plan a brief statement describing the steps you take to notify. Include the date(s) you did the six-month surveillances, and include any other actions you have taken with regards to asbestos or AHERA.

Date:

To: Parents, PTA, Teachers, Maintenance, Staff

From: AHERA Designee

RE: Asbestos Hazard Emergency Response Act (AHERA) Asbestos Inspections and Management Plans.

Chico Unified School District has hired Hazard Management Services, Inc. (HMS, Inc.), a consulting company, to complete the required three-year reinspection of all asbestos-containing building materials in the District. The reinspection for Chapman Elementary, Chico Senior High, and Citrus Elementary School were completed between May 1, 2001 and May 2, 2001 by an accredited inspector, and the reinspection data has been incorporated into the Management Plan.

Also, during the past year the District has performed the required six-month surveillances on \_\_\_\_\_ . This information is also incorporated into the Management Plan.

A copy of the District's Management Plan is available for review during normal office hours in the office of the \_\_\_\_\_. If copies of the plan are desired, a nominal duplicating fee may be charged.

\_\_\_\_\_  
Authorized Signature

\_\_\_\_\_  
Date

**RECORD OF FRIABLE AND NONFRIABLE ACM  
(FORM B)**

Inspection Date(s)  
May 1, 2001

**THREE-YEAR REINSPECTION**

CDS CODE  
04-61424-6002968

SCHOOL  
Chapman Elementary School

SCHOOL PHONE NUMBER  
(530) 891-3100

ADDRESS (NUMBER) (STREET) (CITY) (ZIP)  
1071 E. 16<sup>th</sup> Street Chico, CA 95928

**-IMPORTANT-**

Each building and functional space with friable ACM or friable assumed ACM listed on this form requires completion of **FORM C (PHYSICAL AND HAZARD ASSESSMENT OF FRIABLE ACM OR FRIABLE ASSUMED ACM)**. Indicate location of material on blueprint, diagram or narrative in square or linear feet, and attach a copy (Sec. 763.93).

LINE	BUILDING NAME & FUNCTIONAL SPACE <small>(Indicate Address if Different From Above)</small>	CHECK ONE			CHECK ONE			
		SUR- FACING	TSI	MISC	ACBM		ASSUMED ACM	
					FRIABLE	NON-FRIABLE	FRIABLE	NON-FRIABLE
1.	A			X		X		
2.	B			X		X		
3.	C			X		X		
4.	F			X		X		X
5.	G			X		X		X
6.								
7.								
8.								
9.								
10.								
11.								
12.								
13.								
14.								
15.								
16.								
17.								

**See attached "Homogeneous Materials Records" for all materials and their locations by building. On Form B all buildings are listed, and a summary of all non-friable and friable material is provided. Friable materials and their locations are listed separately under each building on Form B.**

**THREE-YEAR REINSPECTION  
HOMOGENEOUS ACBM RECORDS**

Date of Inspection: May 1, 2001

District: Chico Unified School District

Inspector: Douglas R. Colley/Cory Sanders

School: Chapman Elementary School

Building: A

Material Class	Material	Homo. Mat. #	% Asb.	Ft <sup>2</sup> /L.F.	Location	Condition: Code & Comments	Frivable Yes/No
M	9" VFT		10-15%	UNDETERMINED	KITCHEN BROWN	(1) (4) PREVIOUSLY ROOM 5.	N

**CONDITION CODE**

General Condition: (1) Good (2) Damaged (3) Significantly Damaged (25% or more)  
Change in Condition: (4) No (5) Yes (If Yes, explain under comments)  
Abated: (6) Repaired (7) Removed (8) Encapsulated (9) Enclosed (10) Isolated & Restricted  
Miscellaneous: (11) Inaccessible, no inspection data (12) Other (Explain under comments) (13) Non-Asbestos/Not Inspected

**CONSULT ORIGINAL AND SUPPLEMENTARY INSPECTION REPORTS FOR MATERIALS WITH TRACE AMOUNTS OF ASBESTOS**

**THREE-YEAR INSPECTION  
HOMOGENEOUS ACBM RECORDS**

Date of Inspection: May 1, 2001

District: Chico Unified School District

Inspector: Douglas R. Colley/Cory Sanders

School: Chapman Elementary School

Building: B

Material Class	Material	Homo. Mat. #	% Asb.	F <sup>2</sup> /L.F.	Location	Condition: Code & Comments	Friable Yes/No
M	TRANSITE PANELS		ASSUMED	UNDETERMINED	EXTERIOR	(1) (4)	N

**CONDITION CODE**

General Condition: (1) Good (2) Damaged (3) Significantly Damaged (25% or more)  
 Change in Condition: (4) No (5) Yes (If Yes, explain under comments)  
 Abated: (6) Repaired (7) Removed (8) Encapsulated (9) Enclosed (10) Isolated & Restricted  
 Miscellaneous: (11) Inaccessible, no inspection data (12) Other (Explain under comments) (13) Non-Asbestos/Not Inspected

**CONSULT ORIGINAL AND SUPPLEMENTARY INSPECTION REPORTS FOR MATERIALS WITH TRACE AMOUNTS OF ASBESTOS**

**THREE-YEAR INSPECTION  
HOMOGENEOUS ACBM RECORDS**

Date of Inspection: May 1, 2001

District: Chico Unified School District

Inspector: Douglas R. Colley/Cory Sanders

School: Chapman Elementary School

Building: C

Material Class	Material	Homo. Mat. #	% Asb.	Ft <sup>2</sup> /L.F.	Location	Condition: Code & Comments	Friable Yes/No
M	TRANSITE PANELS		ASSUMED	UNDETERMINED	EXTERIOR	(1) (4)	N

**CONDITION CODE**

- General Condition: (1) Good (2) Damaged (3) Significantly Damaged (25% or more)  
 Change in Condition: (4) No (5) Yes (If Yes, explain under comments)  
 Abated: (6) Repaired (7) Removed (8) Encapsulated (9) Enclosed (10) Isolated & Restricted  
 Miscellaneous: (11) Inaccessible, no inspection data (12) Other (Explain under comments) (13) Non-Asbestos/Not Inspected

**CONSULT ORIGINAL AND SUPPLEMENTARY INSPECTION REPORTS FOR MATERIALS WITH TRACE AMOUNTS OF ASBESTOS**



**THREE-YEAR INSPECTION  
HOMOGENEOUS ACBM RECORDS**

Date of Inspection: May 1, 2001

District: Chico Unified School District

Inspector: Douglas R. Colley/Cory Sanders

School: Chapman Elementary School

Building: F

Material Class	Material	Homo. Mat. #	% Asb.	F <sup>2</sup> /L.F.	Location	Condition: Code & Comments	Friable Yes/No
M	9" VFT		1-5%	UNDETERMINED	ROOM 3 (CLASSROOM 68)	(1) (4)	N
M	9" VFT		1-5%	UNDETERMINED	ROOM 1 (CLASSROOMS 5 & 7)	(1) (4)	N
M	TRANSITE PANELS		ASSUMED	UNDETERMINED	EXTERIOR	(1) (4)	N

**CONDITION CODE**

General Condition: (1) Good (2) Damaged (3) Significantly Damaged (25% or more)  
 Change in Condition: (4) No (5) Yes (If Yes, explain under comments)  
 Abated: (6) Repaired (7) Removed (8) Encapsulated (9) Enclosed (10) Isolated & Restricted  
 Miscellaneous: (11) Inaccessible, no inspection data (12) Other (Explain under comments) (13) Non-Asbestos/Not Inspected

**CONSULT ORIGINAL AND SUPPLEMENTARY INSPECTION REPORTS FOR MATERIALS WITH TRACE AMOUNTS OF ASBESTOS**

**THREE-YEAR INSPECTION  
HOMOGENEOUS ACBM RECORDS**

Date of Inspection: May 1, 2001

District: Chico Unified School District

Inspector: Douglas R. Colley/Cory Sanders

School: Chapman Elementary School

Building: G

Material Class	Material	Homo. Mat. #	% Asb.	Ft <sup>2</sup> /L.F.	Location	Condition: Code & Comments	Friable Yes/No
T	MUD JOINT		1-5%	UNDETERMINED	ROOMS 1-4	(1) (4)	N
M	TRANSITE PANELS		ASSUMED	UNDETERMINED	ROOMS 1-4	(11) COULD NOT FIND.	N

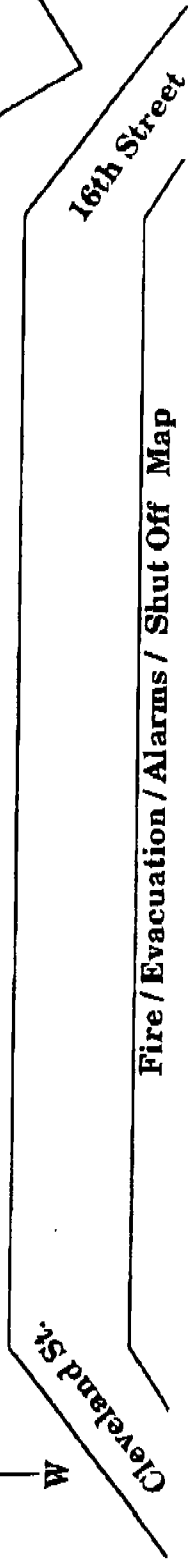
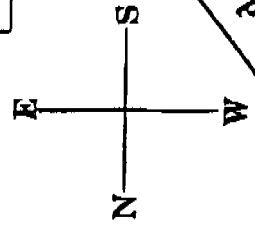
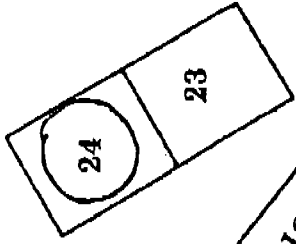
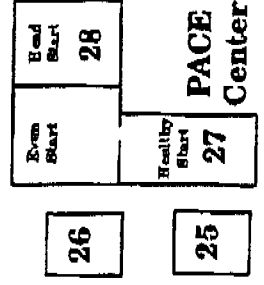
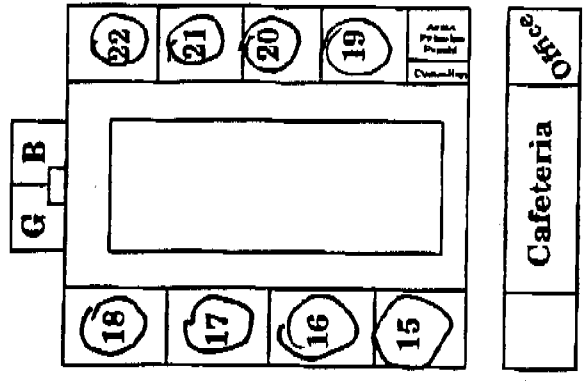
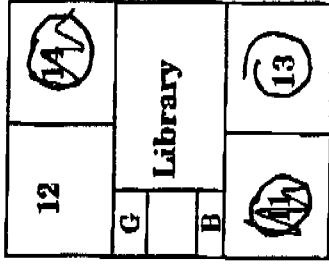
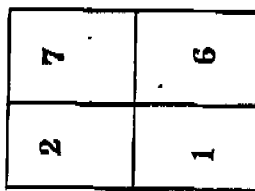
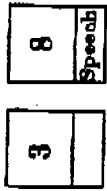
**CONDITION CODE**

General Condition: (1) Good (2) Damaged (3) Significantly Damaged (25% or more)  
Change in Condition: (4) No (5) Yes (If Yes, explain under comments)  
Abated: (6) Repaired (7) Removed (8) Encapsulated (9) Enclosed (10) Isolated & Restricted  
Miscellaneous: (11) Inaccessible, no inspection data (12) Other (Explain under comments) (13) Non-Asbestos/Not Inspected

**CONSULT ORIGINAL AND SUPPLEMENTARY INSPECTION REPORTS FOR MATERIALS WITH TRACE AMOUNTS OF ASBESTOS**

# Chapman School

*Copy 5/1/01*



Fire / Evacuation / Alarms / Shut Off Map

10 Rooms

**CAL**

ENVIRONMENTAL

SERVICES

**INC**

This is to certify that

**Douglas R. Colley**

has successfully completed the EPA approved A.H.E.R.A. course for  
**Asbestos Building Inspector/Management Planner Refresher**  
as required under TSCA Title II

8/1/2000 to 8/1/2000  
Course Date(s)

*David Esparza*

David Esparza - President

8/1/2001  
Expiration Date

CA - 001 - 06 AC-22870  
CA - 001 - 08 Certificate Number

Cal/OSHA Course Approval #

CAL INC 2040 Peabody Rd Vacaville, CA 95696 707-446-7996

# University of California, Berkeley

U N I V E R S I T Y   E X T E N S I O N

This is to confirm that

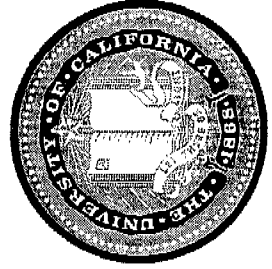
**Cory Sanders**

has attended and satisfactorily passed the examination for the forty hour AHERA approved course  
**Building Inspection and Management Planning for Asbestos**

and has completed the requisite training for asbestos accreditation under TSCA Title II

May 7-11, 2001

Date of Exam: May 11, 2001  
Expiration Date: May 11, 2002  
Certificate number: 3091  
CAL/OSHA approval number: CA-002-07



*Richard V. Tsina*

Richard V. Tsina  
Chair, Environmental Management  
UC Berkeley Extension  
1995 University Avenue  
Berkeley, CA 94720  
(510) 643-7143

**SIX MONTHS OF COMPLIANCE  
HOMOGENEOUS ACBM RECORDS**

Date of Inspection: 12/05/2001

District: Chico Unified School District

Inspector: Robert Peters

School: Chapman Elementary School Building: C

Material Class	Material	Homo. Mat. #	% Asb.	ft <sup>2</sup> /L.F.	Location	Condition: Code & Comments	Frangible Yes/No
M	TRANSITE PANELS		ASSUMED	UNDETERMINED	EXTERIOR	(1) (4) (12/05/01 Same)	N

School: Chapman Elementary School Building: F

Material Class	Material	Homo. Mat. #	% Asb.	ft <sup>2</sup> /L.F.	Location	Condition: Code & Comments	Frangible Yes/No
M	9" VFT		1-5%	UNDETERMINED	ROOM 3 (CLASSROOM 68)	(1) (4) (12/05/01 Same)	N
M	9" VFT		1-5%	UNDETERMINED	ROOM 1 (CLASSROOMS 5 & 7)	(1) (4) →	N
M	TRANSITE PANELS		ASSUMED	UNDETERMINED	EXTERIOR	(1) (4)	N

**CONDITION CODE**

General Condition: (1) Good (2) Damaged (3) Significantly Damaged (25% or more)  
Change in Condition: (4) No (5) Yes (If Yes, explain under comments)  
Abated: (6) Repaired (7) Removed (8) Encapsulated (9) Enclosed (10) Isolated & Restricted  
Miscellaneous: (11) Inaccessible, no inspection data (12) Other (Explain under comments) (13) Non-Asbestos/Not Inspected

**CONSULT ORIGINAL AND SUPPLEMENTARY INSPECTION REPORTS FOR MATERIALS WITH TRACE AMOUNTS OF ASBESTOS**

**SIX MONTH SURVEILLANCE  
HOMOGENEOUS ACM RECORDS**

Date of Inspection: 12/05/2001

District: Chico Unified School District

Inspector: Robert Peters

School: Chapman Elementary School

Building: G

Material Class	Material	Homo. Mat. #	% Asb.	Ft <sup>2</sup> /L.F.	Location	Condition: Code & Comments	Friable Yes/No
T	MUD JOINT		1-5%	UNDETERMINED	ROOMS 1-4	(1) (4) (12/05/01 Same)	N
M	TRANSITE PANELS		ASSUMED	UNDETERMINED	ROOMS 1-4	(11) COULD NOT FIND.	N

**CONDITION CODE**

General Condition: (1) Good (2) Damaged (3) Significantly Damaged (25% or more)  
Change in Condition: (4) No (5) Yes (If Yes, explain under comments)  
Abated: (6) Repaired (7) Removed (8) Encapsulated (9) Enclosed (10) Isolated & Restricted  
Miscellaneous: (11) Inaccessible, no inspection data (12) Other (Explain under comments) (13) Non-Asbestos/Not Inspected

**CONSULT ORIGINAL AND SUPPLEMENTARY INSPECTION REPORTS FOR MATERIALS WITH TRACE AMOUNTS OF ASBESTOS**