

District Office

RECORD OF FRIABLE AND NONFRIABLE ACM
(FORM B)

Inspection Date(s) July 31, 2013

THREE-YEAR REINSPECTION

CDS CODE
04-61424-0000000

SCHOOL
DISTRICT OFFICE

SCHOOL PHONE NUMBER
(530) 898-3000

ADDRESS
1163 E. Seventh Street

(NUMBER)

(STREET)

(CITY)
Chico, CA

(ZIP)
95928

-IMPORTANT-

Each building and functional space with friable ACM or friable assumed ACM listed on this form requires completion of **FORM C (PHYSICAL AND HAZARD ASSESSMENT OF FRIABLE ACM OR FRIABLE ASSUMED ACM)**. Indicate location of material on blueprint, diagram or narrative in square or linear feet, and attach a copy (Sec. 763.93).

LINE	BUILDING NAME & FUNCTIONAL SPACE <small>(Indicate Address if Different From Above)</small>	CHECK ONE			CHECK ONE			
		SUR- FACING	TSI	MISC	ACBM		ASSUMED ACM	
					FRIABLE	NON-FRIABLE	FRIABLE	NON-FRIABLE
1.	DISTRICT OFFICE		X		X			
2.	PSYCHOLOGIST BUILDING DISTRICT MUST CERTIFY							
3.	UST BUILDING DISTRICT MUST CERTIFY							
4.								
5.								
6.								
7.								
8.								
9.								
10.								
11.								
12.								
13.								
14.								
15.								
16.								
17.								

See attached "Homogeneous Materials Records" for all materials and their locations by building. On Form B all buildings are listed, and a summary of all non-friable and friable material is provided. Friable materials and their locations are listed separately under each building on Form B.

**THREE-YEAR REINSPECTION
HOMOGENEOUS ACBM RECORDS**

Date of Inspection: July 31, 2013

District: Chico Unified School District

Inspector: Blake Howes

School: District Office

Building: District Office

Material Class	Material	Homo. Mat. #	% Asb.	Ft ² /L.F.	Location	Condition: Code & Comments	Friable Yes/No
T	PIPE WRAP DEBRIS	7	25-35%	25 S	BASEMENT CRAWL SPACE	(11) INACCESSIBLE. SAMPLE HMS-DO-07C COLLECTED ON 4-1-88.	Y
T	PIPE WRAP STRAIGHT	8	80-85%	350 L	BASEMENT CRAWL SPACE	(11) INACCESSIBLE. (FORMALLY KNOWN AS HOMO MAT. #7.) SAMPLE HMS-DO-07A COLLECTED ON 4-1-88.	Y
T	PIPE WRAP JOINT	9	10-15%	350 L	BASEMENT CRAWL SPACE	(11) INACCESSIBLE. (FORMALLY KNOWN AS HOMO MAT. #7.) SAMPLE HMS-DO-07B COLLECTED ON 4-1-88.	Y

Z:\Clients\Chico USD\13-2751 3 Year Reinspections\Sites\District Office\Dist Office HMR.wpd

CONDITION CODE

General Condition: (1) Good (2) Damaged (3) Significantly Damaged (25% or more)

Change in Condition: (4) No (5) Yes (If Yes, explain under comments)

Abated: (6) Repaired (7) Removed (8) Encapsulated (9) Enclosed (10) Isolated & Restricted

Miscellaneous: (11) Inaccessible, no inspection data (12) Other (Explain under comments) (13) Non-Asbestos/Not Inspected

CONSULT ORIGINAL AND SUPPLEMENTARY INSPECTION REPORTS FOR MATERIALS WITH TRACE AMOUNTS OF ASBESTOS

**ENTEK CONSULTING GROUP, INC.
ASSESSMENT OF TSI and/or FRIABLE MATERIAL**

District: Chico Unified School District

Date: July 31, 2013

School: District Office

Inspector: Blake Howes

Building & Location(s): Basement Crawl Space (Functional Area)

Sample#: HMS-DO-07C

% Asbestos- 25-35%

Homogeneous Mat. #7

Material description: Pipe Wrap Debris

Total amount of material this location: 25 S

Amount of friable material this location: 25 S

Damage	Local		Distributed	X	Damaged	98 -99%
Type of Damage	Air Erosion	X	Water	X	Flaking	X
	Deterioration	X	Physical	X	Delamination	

Probable cause(s) of damage: Unknown

POTENTIAL FOR DISTURBANCE			RESPONSE ACTIONS		PREVENTIVE MEASURES		
	H	M	L	Isolate/Restrict		Fix leaks	X
Accessibility	X			Repair/Cleanup	X	Prevent water contact	X
Vibration			X	Enclose		Do not drill, cut, sand, or grind	X
Air Erosion		X		Remove	X	Do not affix signs	X
Water		X		Encapsulate		Avoid contact	X
Occupancy			X	O & M			

Assessment of Material Condition

Significantly Damaged
(Poor)

Damaged
(Fair)

Not damaged
(Good)

Potential
Damage:

High

High

Mod

Low

High

Mod

Low

Hazard
Ranking:

1

2

3

4

5

6

7

--	--	--	--	--	--	--	--	--

Comments & Observations:

Basement crawlspace inaccessible. Entrance covered with metal mesh with non-reversing screws. No assessment made.

**ENTEK CONSULTING GROUP, INC.
ASSESSMENT OF TSI and/or FRIABLE MATERIAL**

District: Chico Unified School District

Date: July 31, 2013

School: District Office

Inspector: Blake Howes

Building & Location(s): Basement Crawl Space

Sample#: HMS-DO-07A

% Asbestos- 80-85%

Homogeneous Mat. #8

Material description: Pipe Wrap Straight

Total amount of material this location: 350 L

Amount of friable material this location: 350 L

Damage	Local		Distributed	X	Damaged	98%
Type of Damage	Air Erosion	X	Water	X	Flaking	X
	Deterioration	X	Physical	X	Delamination	

Probable cause(s) of damage: Unknown

POTENTIAL FOR DISTURBANCE			RESPONSE ACTIONS		PREVENTIVE MEASURES	
	H	M	L	Isolate/Restrict		Fix leaks
Accessibility	X			Repair/Cleanup	X	Prevent water contact
Vibration			X	Enclose		Do not drill, cut, sand, or grind
Air Erosion		X		Remove	X	Do not affix signs
Water		X		Encapsulate		Avoid contact
Occupancy			X	O & M		

Assessment of Material Condition

Significantly Damaged
(Poor)

Damaged
(Fair)

Not damaged
(Good)

Potential
Damage:

High

High

Mod

Low

High

Mod

Low

Hazard
Ranking:

1

2

3

4

5

6

7

--	--	--	--	--	--	--	--	--

Comments & Observations:

Basement crawlspace inaccessible. Entrance covered with metal mesh with non-reversing screws. No assessment made.

**ENTEK CONSULTING GROUP, INC.
ASSESSMENT OF TSI and/or FRIABLE MATERIAL**

District: Chico Unified School District

Date: July 31, 2013

School: District Office

Inspector: Blake Howes

Building & Location(s): Basement Crawl Space

Sample#: HMS-DO-07B

% Asbestos- 10-15%

Homogeneous Mat. #9

Material description: Pipe Wrap Joint

Total amount of material this location: 350 L

Amount of friable material this location: 350 L

Damage	Local		Distributed	X	Damaged	98%
Type of Damage	Air Erosion	X	Water	X	Flaking	X
	Deterioration	X	Physical	X	Delamination	

Probable cause(s) of damage: Unknown

POTENTIAL FOR DISTURBANCE			RESPONSE ACTIONS		PREVENTIVE MEASURES	
	H	M	L	Isolate/Restrict		Fix leaks
Accessibility	X			Repair/Cleanup	X	Prevent water contact
Vibration			X	Enclose		Do not drill, cut, sand, or grind
Air Erosion		X		Remove	X	Do not affix signs
Water		X		Encapsulate		Avoid contact
Occupancy			X	O & M		

Assessment of Material Condition

Significantly Damaged
(Poor)

Damaged
(Fair)

Not damaged
(Good)

Potential
Damage:

High

High

Mod

Low

High

Mod

Low

Hazard
Ranking:

1

2

3

4

5

6

7

--	--	--	--	--	--	--	--	--

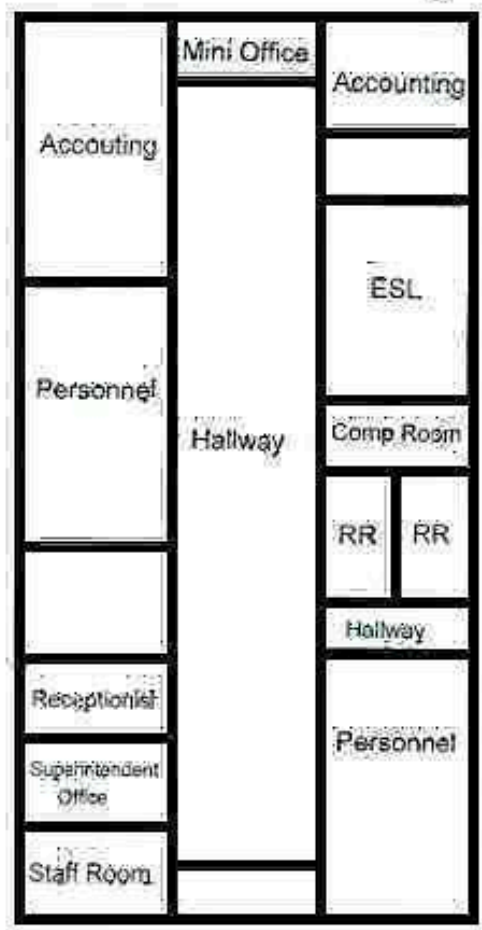
Comments & Observations:

Basement crawlspace inaccessible. Entrance covered with metal mesh with non-reversing screws. No assessment made.

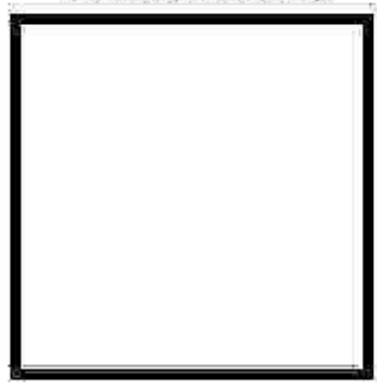


District Office

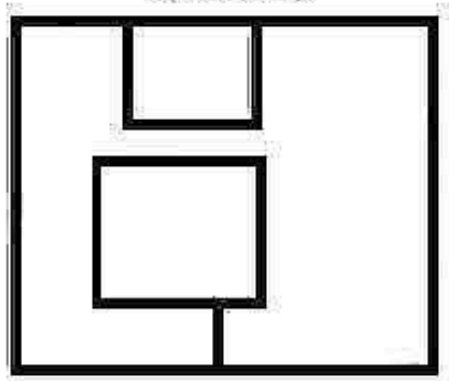
Admin District Office Building



Psychologist Building



UST Building



Blake Howes

Chico Unified School District
District Office
1163 E. Seventh Street
Chico, CA 95928

Entek Consulting Group, Inc.
4200 Rocklin Road, Suite 7
Rocklin, California 95677
Map Not To Scale

3-Year AHERA Reinspection
Conducted by Blake Howes
July 31, 2013
Project 13-2751

SIX-MONTH SURVEILLANCE

**SIX MONTH SURVEILLANCE
HOMOGENEOUS ACBM RECORDS**

Date of Inspection:

District: Chico Unified School District

Inspector:

School: District Office

Building: District Office

Material Class	Material	Homo. Mat. #	% Asb.	Ft ² /L.F.	Location	Condition: Code & Comments	Friable Yes/No
T	PIPE WRAP DEBRIS	7	25-35%	25 S	BASEMENT CRAWL SPACE	(11) INACCESSIBLE. SAMPLE HMS-DO-07C COLLECTED ON 4-1-88.	Y
T	PIPE WRAP STRAIGHT	8	80-85%	350 L	BASEMENT CRAWL SPACE	(11) INACCESSIBLE. (FORMALLY KNOWN AS HOMO MAT. #7.) SAMPLE HMS-DO-07A COLLECTED ON 4-1-88.	Y
T	PIPE WRAP JOINT	9	10-15%	350 L	BASEMENT CRAWL SPACE	(11) INACCESSIBLE. (FORMALLY KNOWN AS HOMO MAT. #7.) SAMPLE HMS-DO-07B COLLECTED ON 4-1-88.	Y

Z:\Clients\Chico USD\13-2751 3 Year Reinspections\Sites\District Office\Dist Office 6 month.wpd

CONDITION CODE

General Condition: (1) Good (2) Damaged (3) Significantly Damaged (25% or more)

Change in Condition: (4) No (5) Yes (If Yes, explain under comments)

Abated: (6) Repaired (7) Removed (8) Encapsulated (9) Enclosed (10) Isolated & Restricted

Miscellaneous: (11) Inaccessible, no inspection data (12) Other (Explain under comments) (13) Non-Asbestos/Not Inspected

CONSULT ORIGINAL AND SUPPLEMENTARY INSPECTION REPORTS FOR MATERIALS WITH TRACE AMOUNTS OF ASBESTOS