

COHASSET ELEMENTARY SCHOOL  
CHICO UNIFIED SCHOOL DISTRICT  
CHICO, BUTTE CO., CALIFORNIA

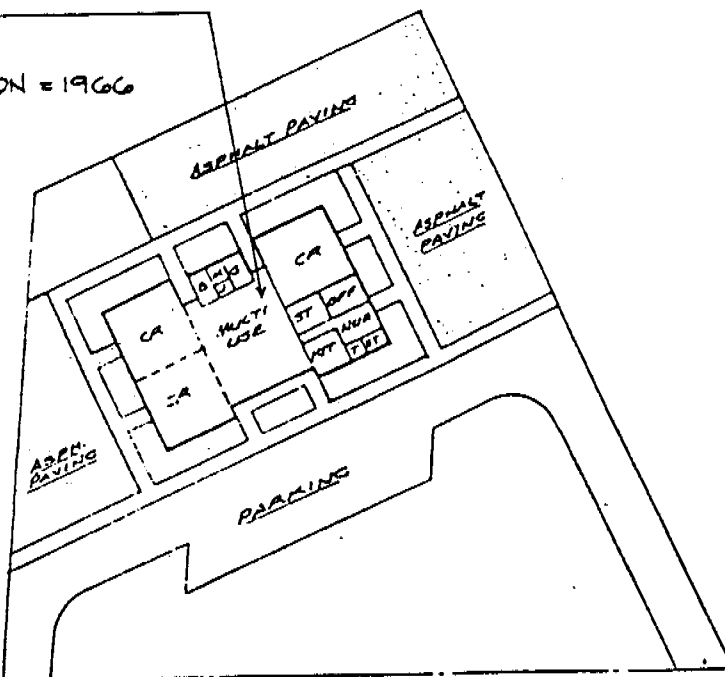
DIAGRAM OF BUILDING AREA

- EXISTING (1-A)
- BASIC PLANS (2-A)
- FINAL PLANS (3-A)

UNIT "A"

APPL # 25436

NOTICE OF COMPLETION = 1966



COHASSET ROAD



COHASSET SCHOOL

Scale 1" = 20' 0"

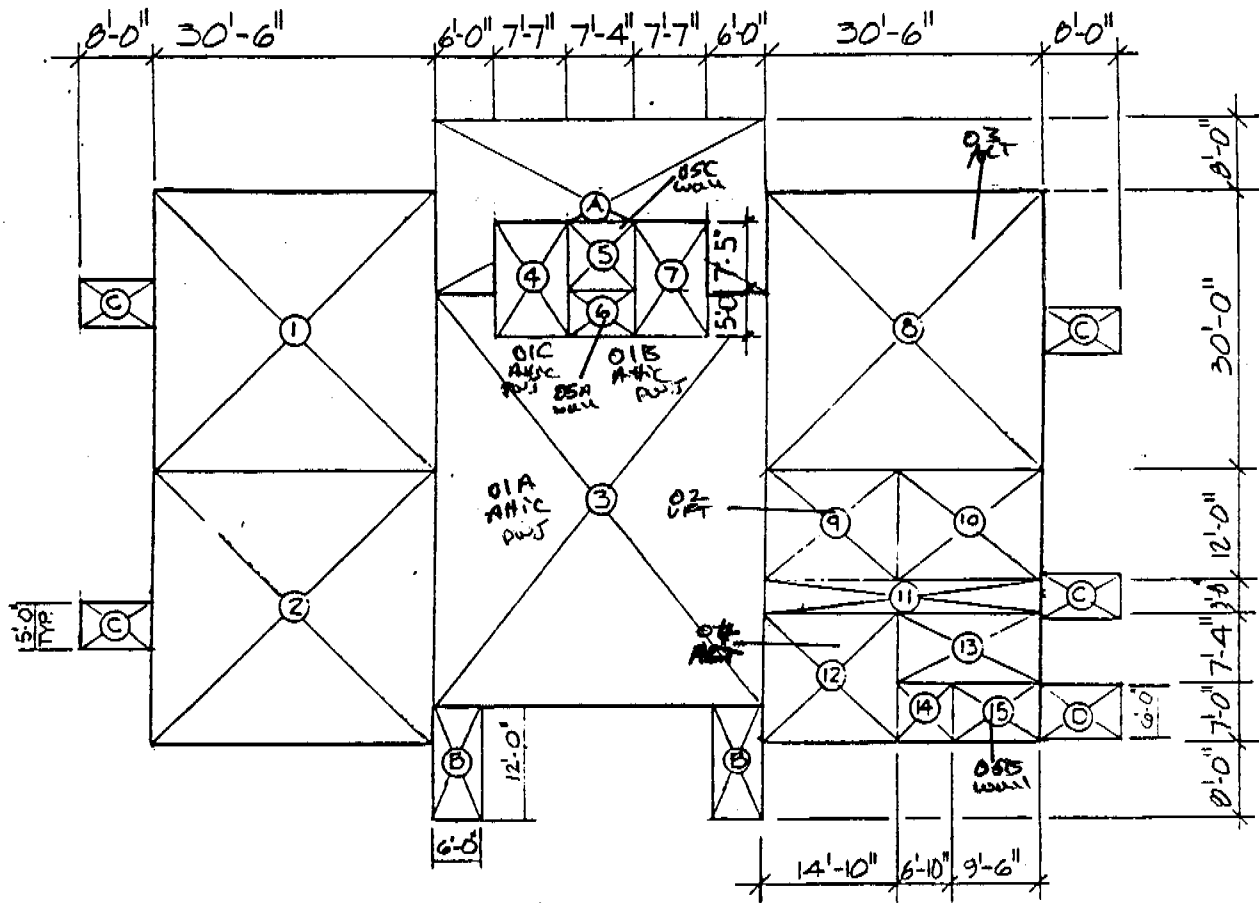
ABOVE IS MEASURED IN ACCORDANCE WITH ART. 2022  
SUBCHAPTER 8, TITLE 5, CALIF. ADMIN. CODE  
ARCHITECT

DATE: 3-23-87 SHEET 1 OF 4  
OFFICE OF THE STATE ARCHITECT

COHASSET ELEMENTARY SCHOOL  
 CHICO UNIFIED SCHOOL DISTRICT  
 CHICO, BUTTE CO., CALIFORNIA

DIAGRAM OF BUILDING AREA

- EXISTING (1-A)
- BASIC PLANS (2-A)
- FINAL PLANS (3-A)



UNIT 'A'  
 1" = 20'-0"

ABOVE IS MEASURED IN ACCORDANCE WITH ART. 2022  
 SUBCHAPTER 8, TITLE 5, CALIF. ADMIN. CODE  
 ARCHITECT

DATE: 3-23-87 SHEET 2 OF 4  
 OFFICE OF THE STATE ARCHITECT

*Paul J. ...*

UNIT "A"

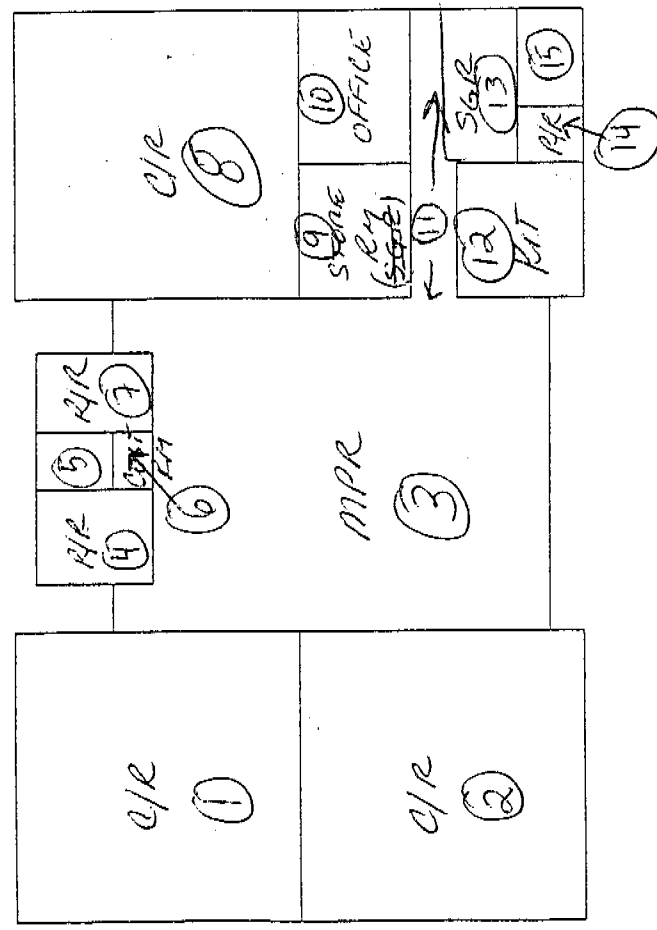
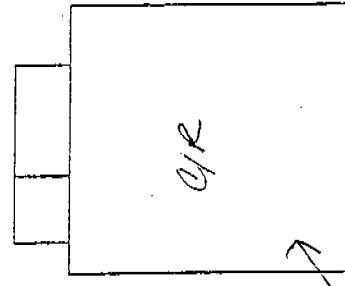
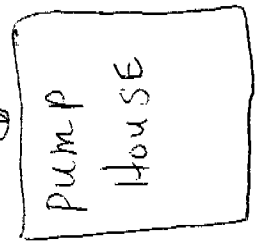
1. CLASSROOM	30.5 x 30.0	915.00
2. CLASSROOM	30.5 x 30.0	915.00
3. MULTI-USE	34.83 x 41.17 + 2(6 x 4.6)	1487.95
4. TOILET	7.58 x 12.5	94.75
5. MECH.	7.33 x 7.5	54.98
6. JANITOR	7.33 x 5.0	35.65
7. TOILET	7.58 x 12.5	94.75
8. CLASSROOM	30.5 x 30.0	915.00
9. GENERAL STORAGE	14.5 x 12.0	174.00
10. OFFICE	16.0 x 12.0	192.00
11. CORRIDOR	30.5 x 3.66	111.63
12. KITCHEN	14.5 x 18.00	261.00
13. WORK ROOM	16.0 x 11.00	176.00
14. TOILET	6.83 x 7.00	47.81
15. YARD STORAGE	9.5 x 7.00	66.5
A. COVERED CORR.	34.5 x 8.0 + (6.0 x 11.0 x 2) + (2.25 x 22.5) x .33	151.35
B. COVERED CORR.	6.0 x 12.0 x 2 x .33	47.52
C. COVERED CORR.	5.0 x 8.0 x 5 x .33	66.00
D. COVERED CORR.	6.0 x 8.0 x .33	15.84

TOTAL = 5,822.73 <sup>sq</sup>

*Paul [Signature]*

Current  
 MAP  
 8/15/01  
 Copy from New

"no suspect AcBm"  
 Concrete Floor  
 metal walls  
 metal ceiling



Portable  
 MFG DATE 8/86  
 Sunser. CONST.  
 Module # 8551

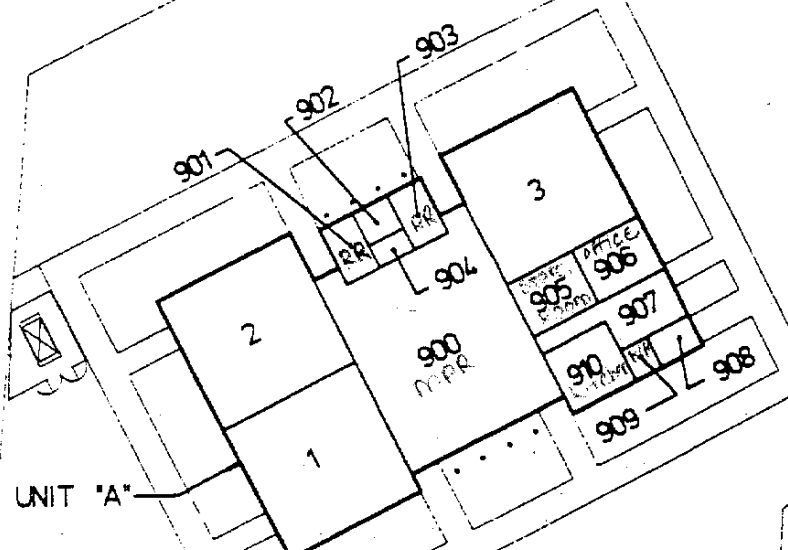
COHASSET ELEMENTARY

↳ District not eligible for exemption -  
 MFG Cut-off DATE IS OCT. 12, 1988.  
 Assume all Suspect materials until proper Sampling

completing  
the building  
work

Pump  
house

UNIT "B"  
RELOCATABLE



UNIT "A"

FRONT OF SCHOOL



COHASSET ROAD

*John*  
041504  
3 1/2 IN INSPECTION

# COHASSET ELEMENTARY SCHOOL

terry/andaps/andaps.dwg/Contd 5 Terry 3/97 Layer 2D

N.T.S.