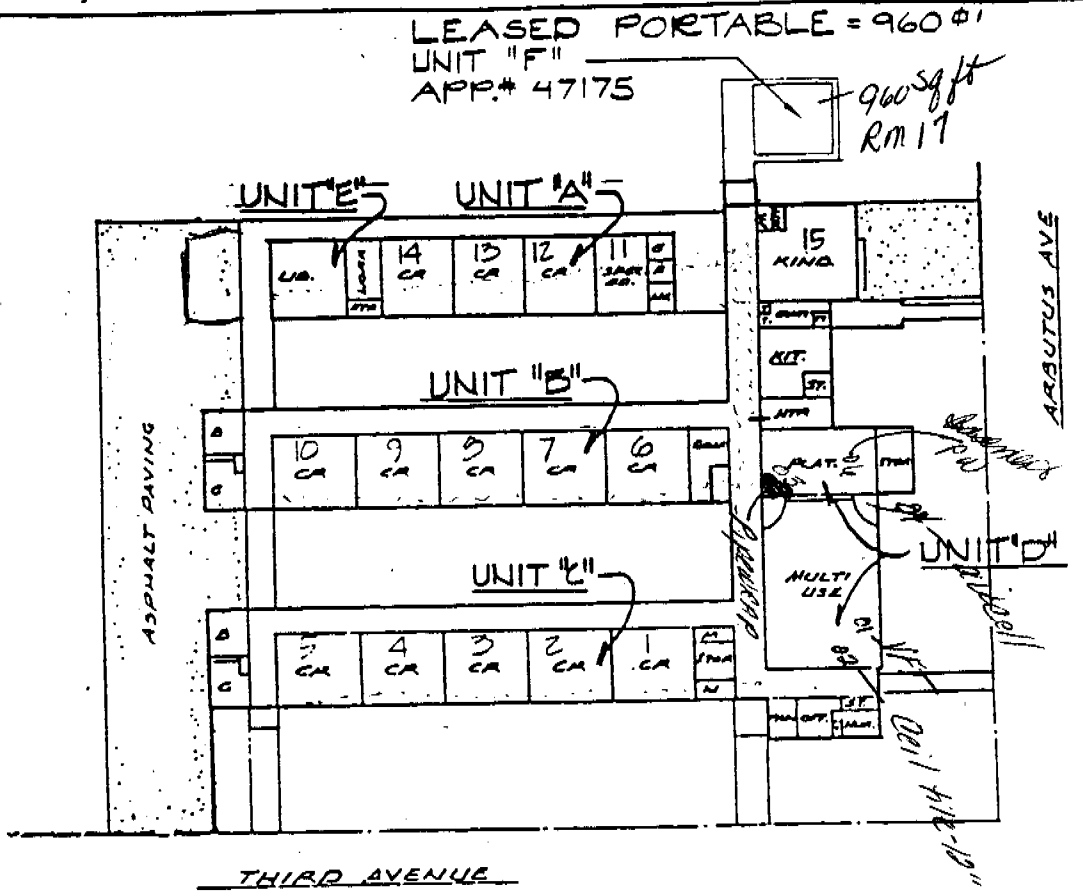




HOOKER OAK ELEMENTARY SCHOOL  
 CHICO UNIFIED SCHOOL DISTRICT  
 CHICO, BUTTE CO., CALIFORNIA

DIAGRAM OF BUILDING AREA

- EXISTING (1-A)
- BASIC PLANS (2-A)
- FINAL PLANS (3-A)

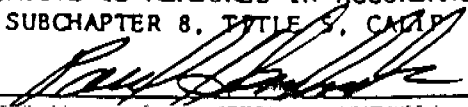


 **HOOKER OAK SCHOOL**  
 Scale 

NOTES:  
UNIT "A" APPL# 13064 NOTICE OF COMPLETION = 1957  
UNITS "B,C & D" APPL# 4432 NOTICE OF COMPLETION = 1969  
UNIT "E" APPL# 26258 NOTIC OF COMPLETION = 1967

ABOVE IS MEASURED IN ACCORDANCE WITH ART. 2022  
 SUBCHAPTER 8, TITLE 5, CALIF. ADMIN. CODE  
 ARCHITECT

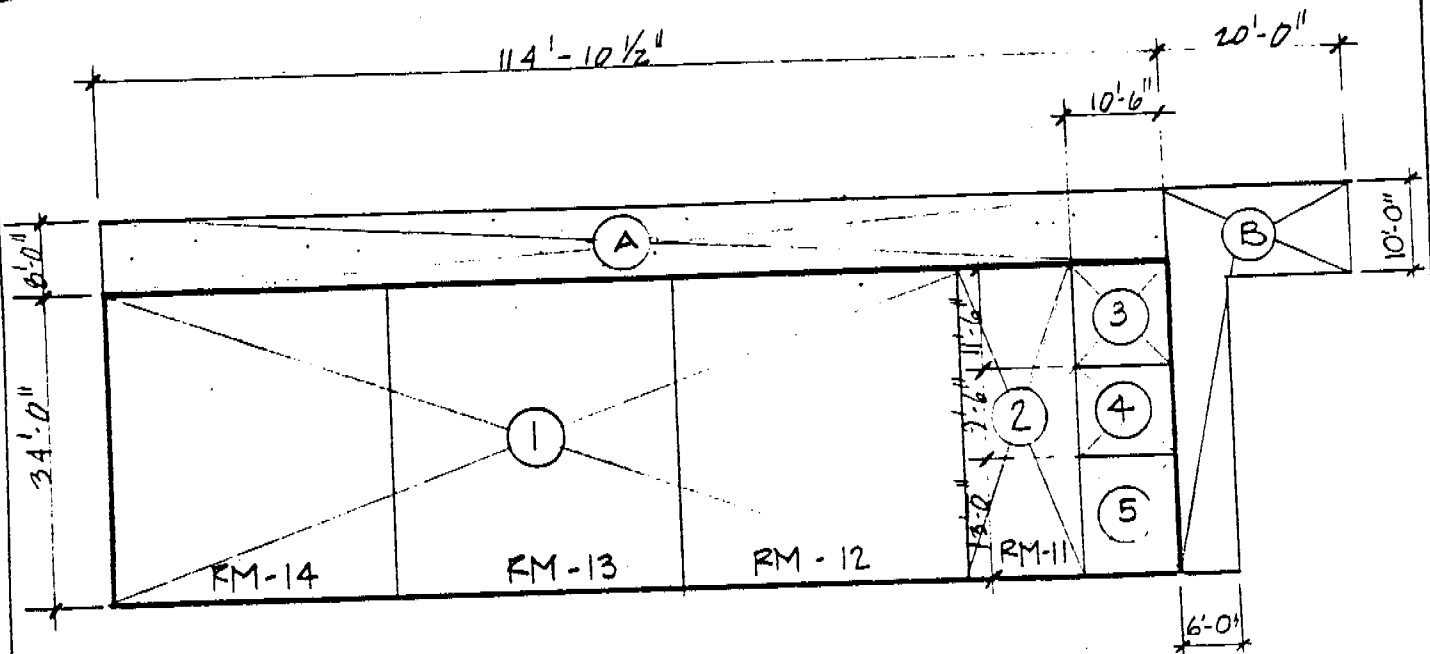
DATE: 3-23-87 SHEET 1 OF 8  
 OFFICE OF THE STATE ARCHITECT



HOOKER OAK ELEMENTARY SCHOOL  
 CHICO UNIFIED SCHOOL DISTRICT  
 CHICO, BUTTE CO., CALIFORNIA

DIAGRAM OF BUILDING AREA

EXISTING (1-A)  
 BASIC PLANS (2-A)  
 FINAL PLANS (3-A)



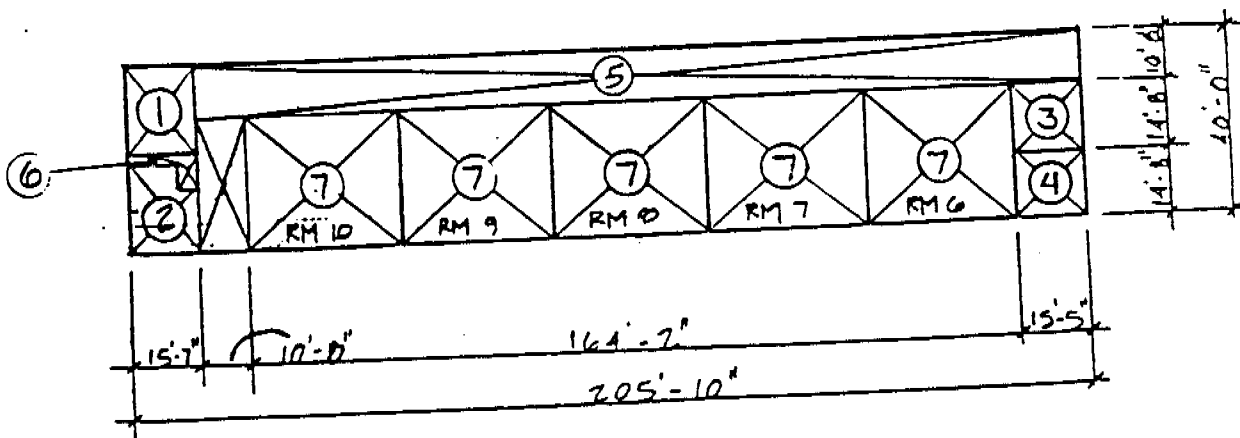
UNIT 'A'  
 1" = 20'-0"

1. CLERKS (3)	34.0' x 92.34'	=	3139.56'
2. SPEECH RM	34.0' x 12.0'	=	408.0'
3. GIRLS LAV.	10.5' x 11.5'	=	120.75'
4. BOYS LAV.	10.5' x 9.5'	=	99.75'
5. WORK RM.	10.5' x 13.0'	=	136.50'
			3904.56' #
A. COVERED CORR.	(8.0 x 114.9) x (1/3)	=	303.24
B. " "	(6 x 32 + 10 x 20) x (1/3)	=	129.36
			TOTAL = 432.60' #

ABOVE IS MEASURED IN ACCORDANCE WITH ART. 2022  
 SUBCHAPTER 8, TITLE 5, CALIF. ADMIN. CODE  
 ARCHITECT

DATE: 3-23-87 SHEET 2 OF 3  
 OFFICE OF THE STATE ARCHITECT

*Paul J. [Signature]*



UNIT 'B'  
 1" = 40'-0"

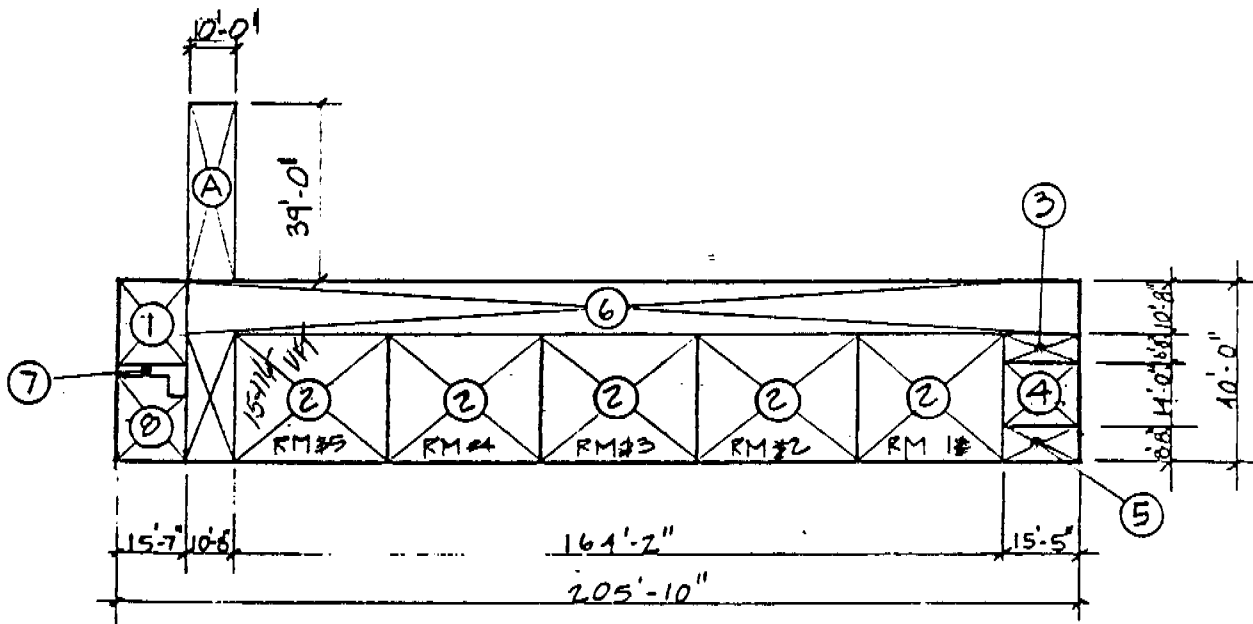
1. BOY'S LAV.	15'-7" X 19	= 296.02
2. GIRL'S LAV.	(15'-7" X 19) - (5 X 4)	= 276.02
3. STORAGE	(14'-8" X 15'-5")	= 226.05
4. CUSTODIAN	(14'-8" X 15'-5")	= 226.05
5. ENCLOSED CORR.	12.67 X (190.25 + 29.33)	= 2342.92
6. PIPE & STOR.	(2 X 15'-7") + (5 X 4)	= 51.16
7. CLASSRMS (5)	164.16 X 29.33	= 4815.36

TOTAL 8,233.89

HOOKER OAK ELEMENTARY SCHOOL  
 CHICO UNIFIED SCHOOL DISTRICT  
 CHICO, BUTTE CO., CALIFORNIA

DIAGRAM OF BUILDING AREA

☒ EXISTING (1-A)  
 □ BASIC PLANS (2-A)  
 □ FINAL PLANS (3-A)



UNIT 1/4"  
 1" 40'-0"

1. BOY'S LAV.	15'-7" X 19	=	296.02
2. CLASSRMS (5)	104.16 X 29.33	=	4815.36
3. MEN'S LAV.	15.42 X 6.67	=	102.80
4. STORAGE	15.42 X 14.0	=	215.88
5. WOMEN'S LAV.	15.42 X 8.67	=	133.64
6. ENCLOSED CORR.	10.67 X (190.24 + 29.33)	=	2342.19
7. PIPE & STOR.	(2 X 15'-7") + (5 X 4)	=	51.16
8. GIRL'S LAV.	(15'-7" X 19) - (5 X 4)	=	276.26
			<hr/>
			8233.07 #'
A. COVERED WALK	10' X 39' X 1/3		<hr/>
			128.70 #'

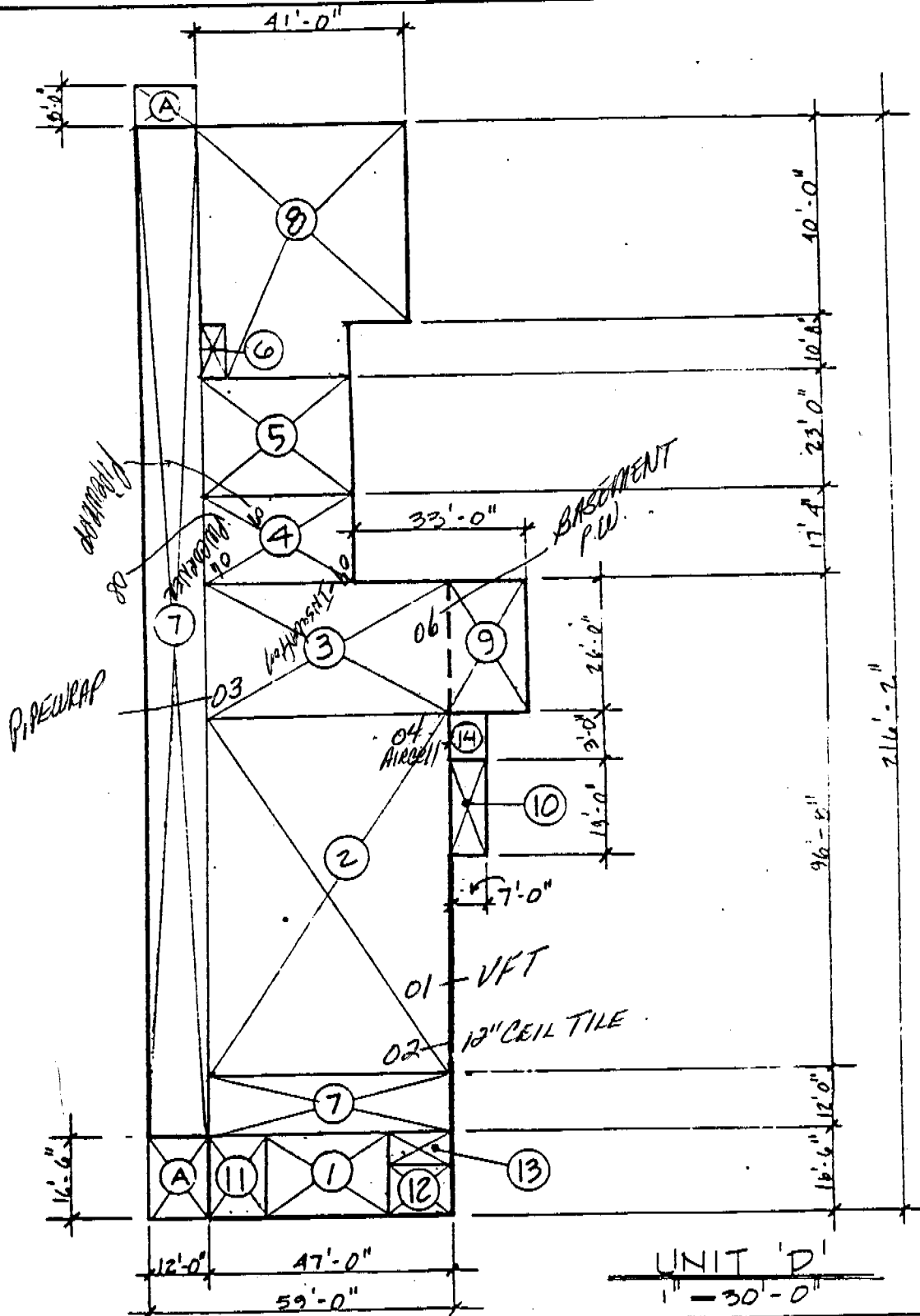
ABOVE IS MEASURED IN ACCORDANCE WITH ART. 2022  
 SUBCHAPTER 8, TITLE 5, CALIF. ADMIN. CODE  
 ARCHITECT

DATE: 3-23-57 SHEET 4 OF 8  
 OFFICE OF THE STATE ARCHITECT

HOOKER OAK ELEMENTARY SCHOOL  
 CHICO UNIFIED SCHOOL DISTRICT  
 CHICO, BUTTE CO., CALIFORNIA

DIAGRAM OF BUILDING AREA

- EXISTING (1-A)
- BASIC PLANS (2-A)
- FINAL PLANS (3-A)



UNIT 'D'  
 1" = 30'-0"

ABOVE IS MEASURED IN ACCORDANCE WITH ART. 2022  
 SUBCHAPTER 8, TITLE 5, CALIF. ADMIN. CODE  
 ARCHITECT

DATE: 3-23-87 SHEET 5 OF 8  
 OFFICE OF THE STATE ARCHITECT

*Paul [Signature]*

UNIT "D"

1. OFFICE	19.5 X 16.5	=	321.75
2. ASSEMBLY RM	47' X 70'-8"	=	3321.49
3. STAGE/BASEMENT	47' X 26'	=	1222
4. BOILER RM	29 X 17.33	=	502.67
5. KITCHEN	29 X 23.0	=	667.0
6. TOILETS (2)	4' X 10.33	=	41.32
7. ENCLOSED CORR.	24.5 X 12.0	=	294.0
8. KINDERGARTEN	(40 X 41) + (10.33 X 25)	=	1898.25
9. PLATFORM STOR.	20 X 13.4	=	268.0
10. STORAGE	7 X 19	=	133
11. PRINCIPLE	11'-9" X 16.5	=	192.55
12. HEALTH	15.8 X 10.5	=	165.9
13. STORAGE	15.8 X 5.5	=	86.9
14. CLOSED CORR.	9.0 X 7.0	=	63.00
	<b>TOTAL</b>	<b>=</b>	<b>11931.51</b>
A. OPEN CORR.	(12 X 16.5) X (12 X 8) X 1/3	=	97.9
	<b>TOTAL</b>	<b>=</b>	<b>97.9</b>

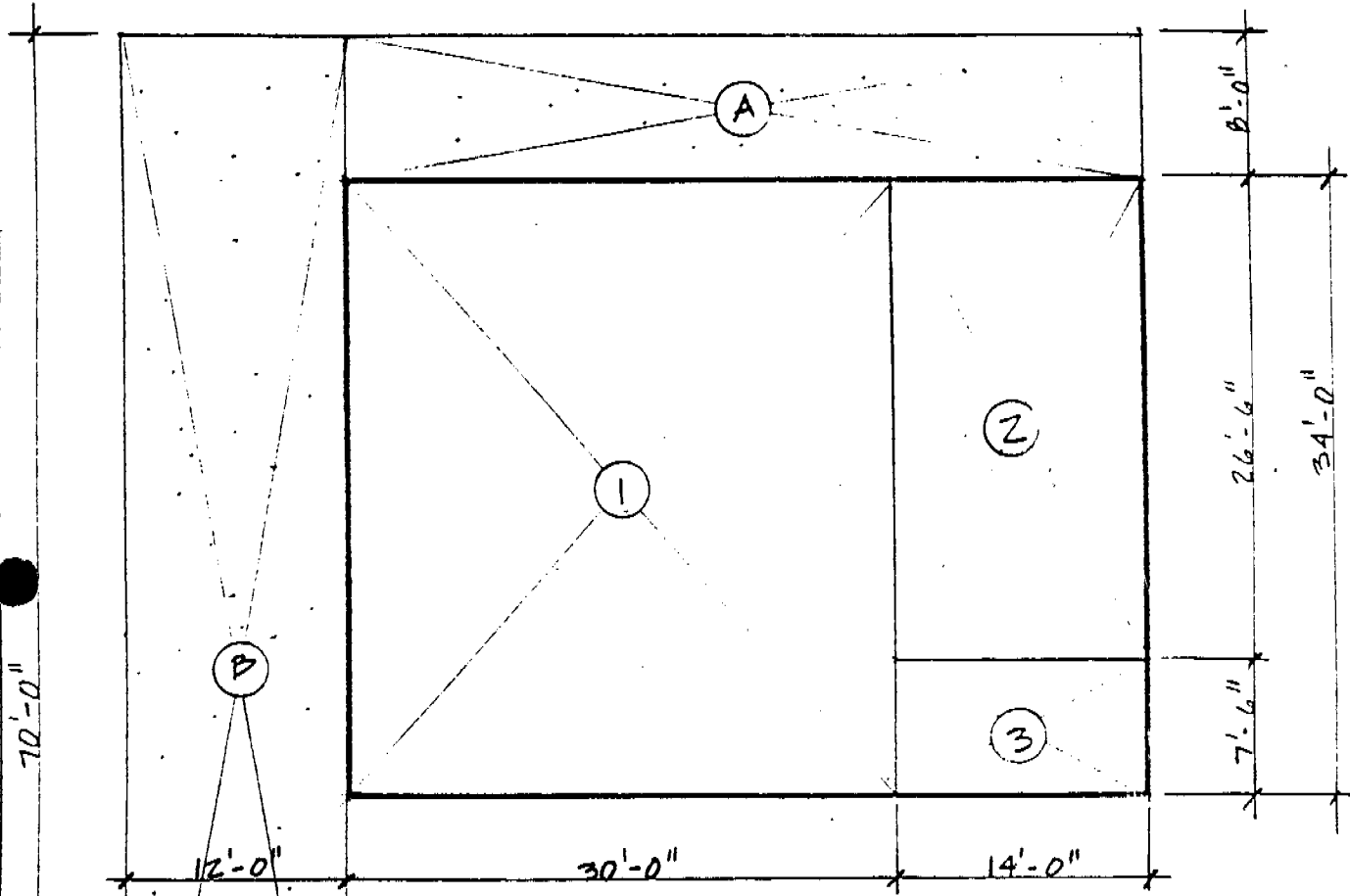
*Raymond J. ...*

HOOKER OAK ELEMENTARY SCHOOL  
 CHICO UNIFIED SCHOOL DISTRICT  
 CHICO, BUTTE CO., CALIFORNIA

DIAGRAM OF BUILDING AREA

EXISTING (1-A)  
 BASIC PLANS (2-A)  
 FINAL PLANS (3-A)

UNIT 1/8"  
 1" 10'-0"



1. LIBRARY	-	30' x 34'	=	1020
2. WORK RM.	-	14' x 26.5'	=	371
3. MECH. RM.	-	7.5' x 14.0'	=	105
				1496 #
A. COVERED WALK		(44 x 8) (1/3)	=	116.16
B. " "		(70 x 12) (1/3)	=	277.2
TOTAL				= 393.36 #

ABOVE IS MEASURED IN ACCORDANCE WITH ART. 2022  
 SUBCHAPTER 8, TITLE 5, CALIF. ADMIN. CODE  
 ARCHITECT

DATE: 3-23-87 SHEET 7 OF 8  
 OFFICE OF THE STATE ARCHITECT

*Paul [Signature]*

HOOKEP OAK ELEMENTARY SCHOOL  
CHICO UNIFIED SCHOOL DISTRICT  
CHICO, BUTTE CO., CALIFORNIA

DIAGRAM OF BUILDING AREA

EXISTING (1-A)  
 BASIC PLANS (2-A)  
 FINAL PLANS (3-A)

SUMMARY OF AREAS

<u>UNIT</u>	<u>TOTAL AREA</u>
UNIT "A" COVERED CORRIDOR @	3,904.56 432.60
UNIT "B"	8,233.58
UNIT "C" COVERED CORRIDOR @	8,233.07 128.7
UNIT "D" COVERED CORRIDOR @	11,931.51 97.9
UNIT "E" COVERED CORRIDOR 2	1,496.00 393.36
	<hr/> <hr/>
TOTAL . . .	34,851.28 SQ. FT
UNIT F (PORTABLE)	$\frac{960}{35811}$

ABOVE IS MEASURED IN ACCORDANCE WITH ART. 2022  
SUBCHAPTER 8, TITLE 5, CALIF. ADMIN. CODE  
ARCHITECT

DATE: 3-23-87 SHEET 8 OF 8  
OFFICE OF THE STATE ARCHITECT



#19

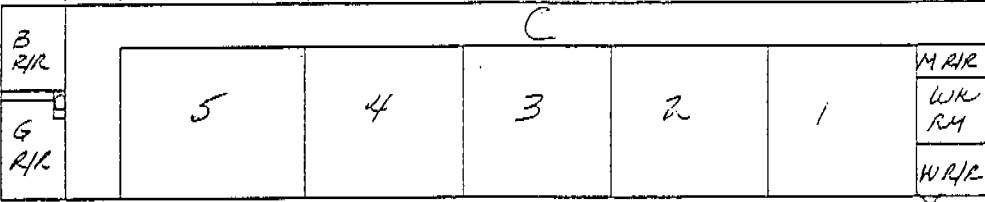
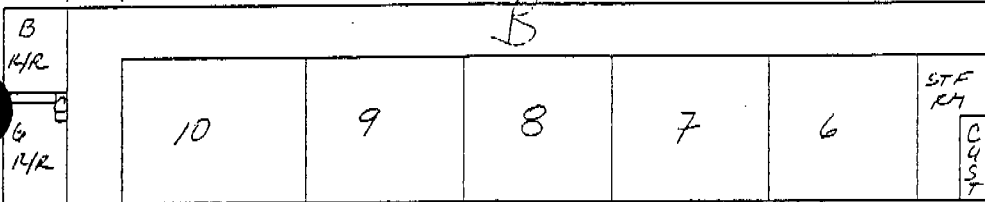
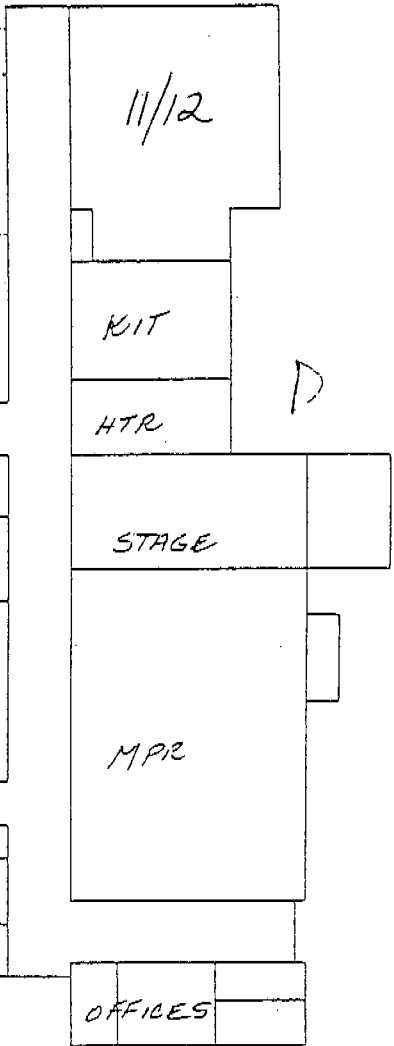
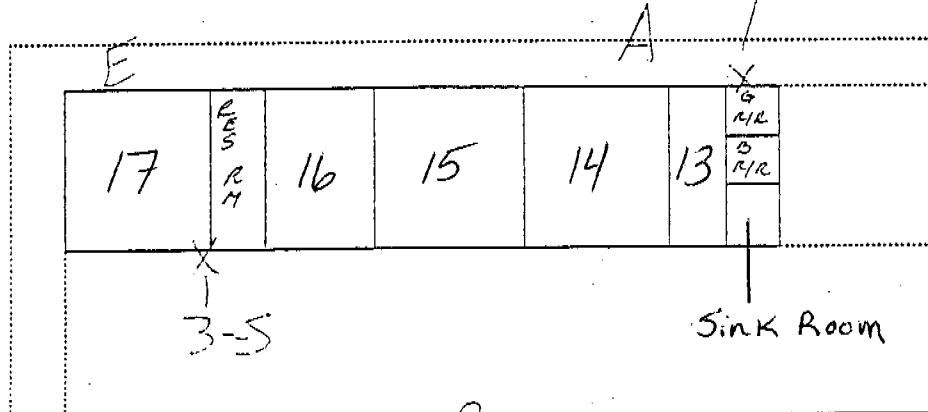
#20

#21

LIBRARY

18

2 SC



1-SC

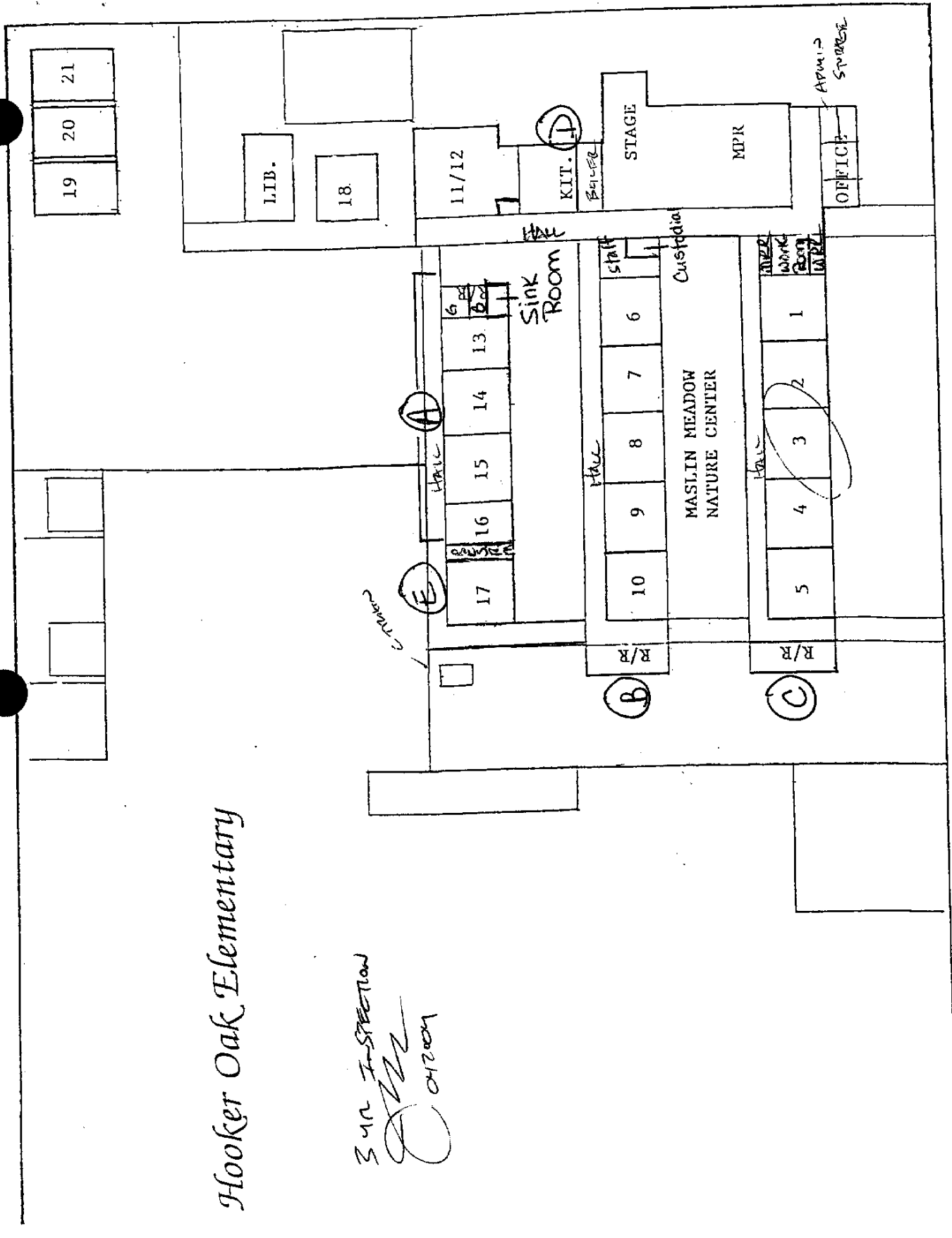
Current MAP  
 05/01/01  
 Copy [Signature]

# HOOKER OAK ELEMENTARY

N  
 ↓

# Hooker Oak Elementary

3 yr INSPECTION  
*[Signature]*  
 04/2004



EAST THIRD AVENUE