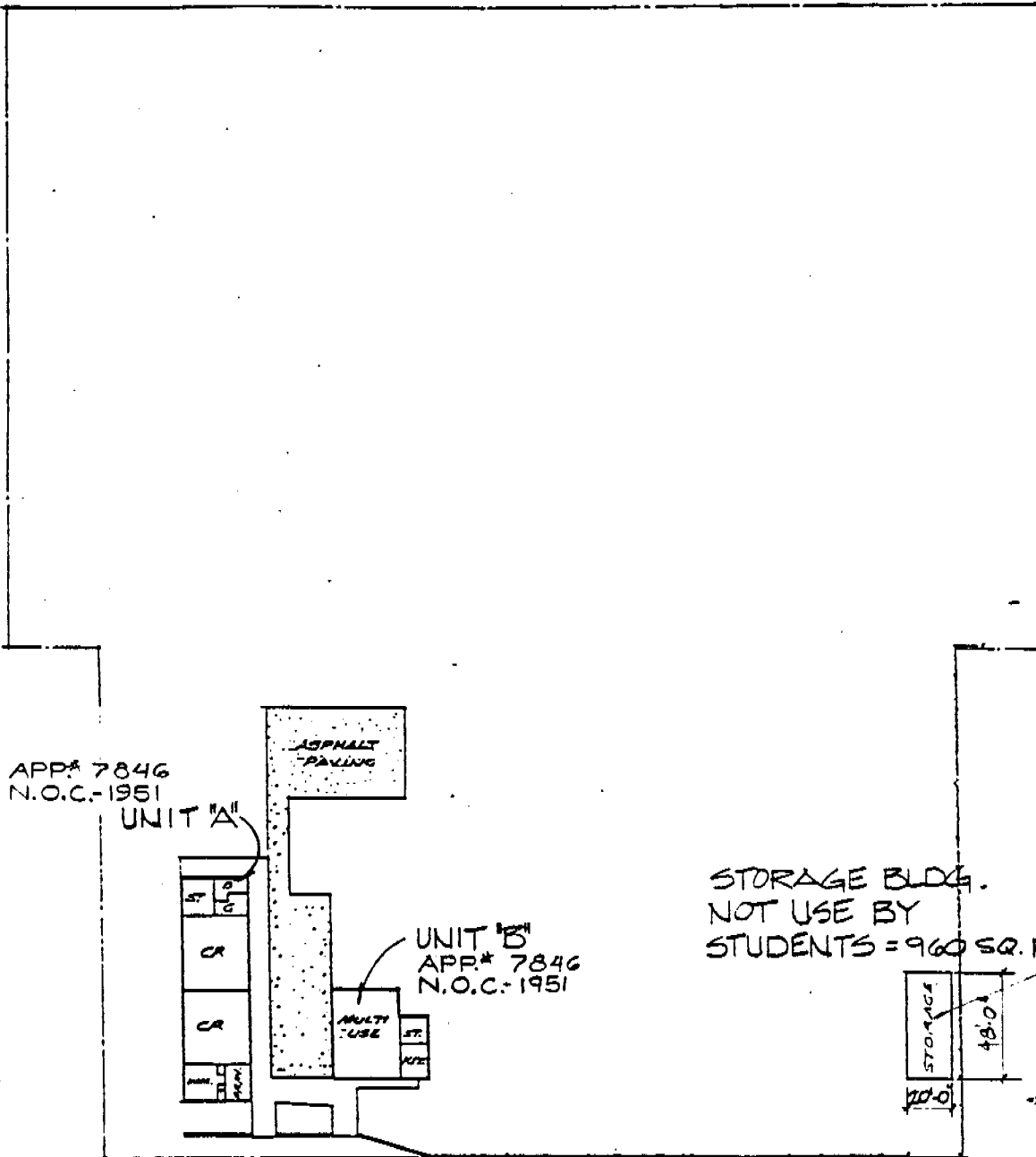


NORD ELEMENTARY SCHOOL
 CHICO UNIFIED SCHOOL DISTRICT
 CHICO, BUTTE CO., CALIFORNIA

DIAGRAM OF BUILDING AREA

EXISTING (1-A)
 BASIC PLANS (2-A)
 FINAL PLANS (3-A)



THIS DRAWING IS MEASURED IN ACCORDANCE WITH ART. 2022
 CHAPTER 8, TITLE 5, CALIF. ADMIN. CODE

DATE: 3-24-87 SHEET 1 OF 5
 OFFICE OF THE STATE ARCHITECT

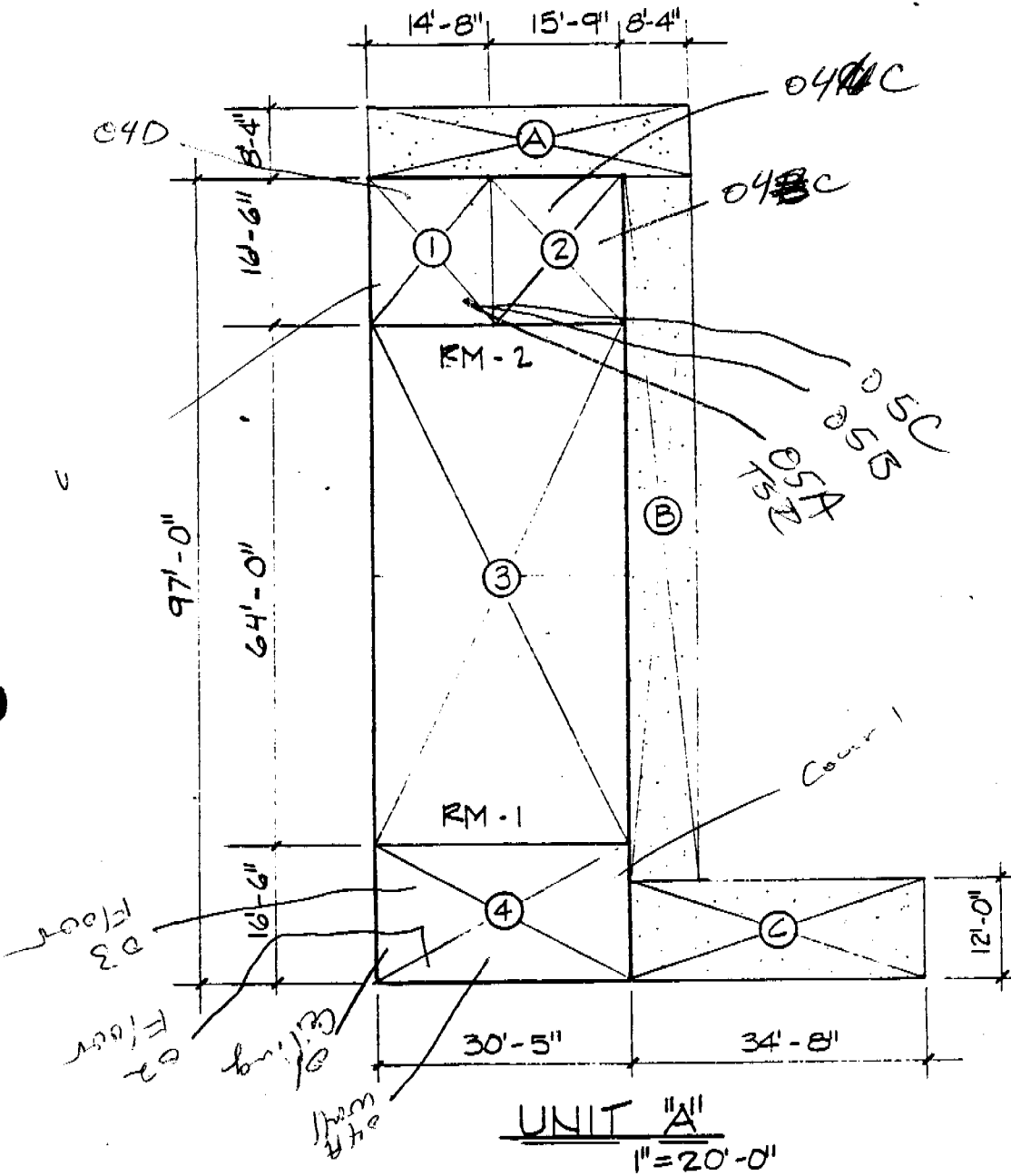
ARCHITECT

Paul [Signature]

NORD ELEMENTARY SCHOOL
 CHICO UNIFIED SCHOOL DISTRICT
 CHICO, BUTTE CO., CALIFORNIA

DIAGRAM OF BUILDING AREA

- ☒ EXISTING (1-A)
- BASIC PLANS (2-A)
- FINAL PLANS (3-A)



ABOVE IS MEASURED IN ACCORDANCE WITH ART. 2022
 CHAPTER 8, TITLE 5, CALIF. ADMIN. CODE
 ARCHITECT

DATE: 3-24-87 SHEET 2 OF 5
 OFFICE OF THE STATE ARCHITECT

Paul [Signature]

UNIT "A"

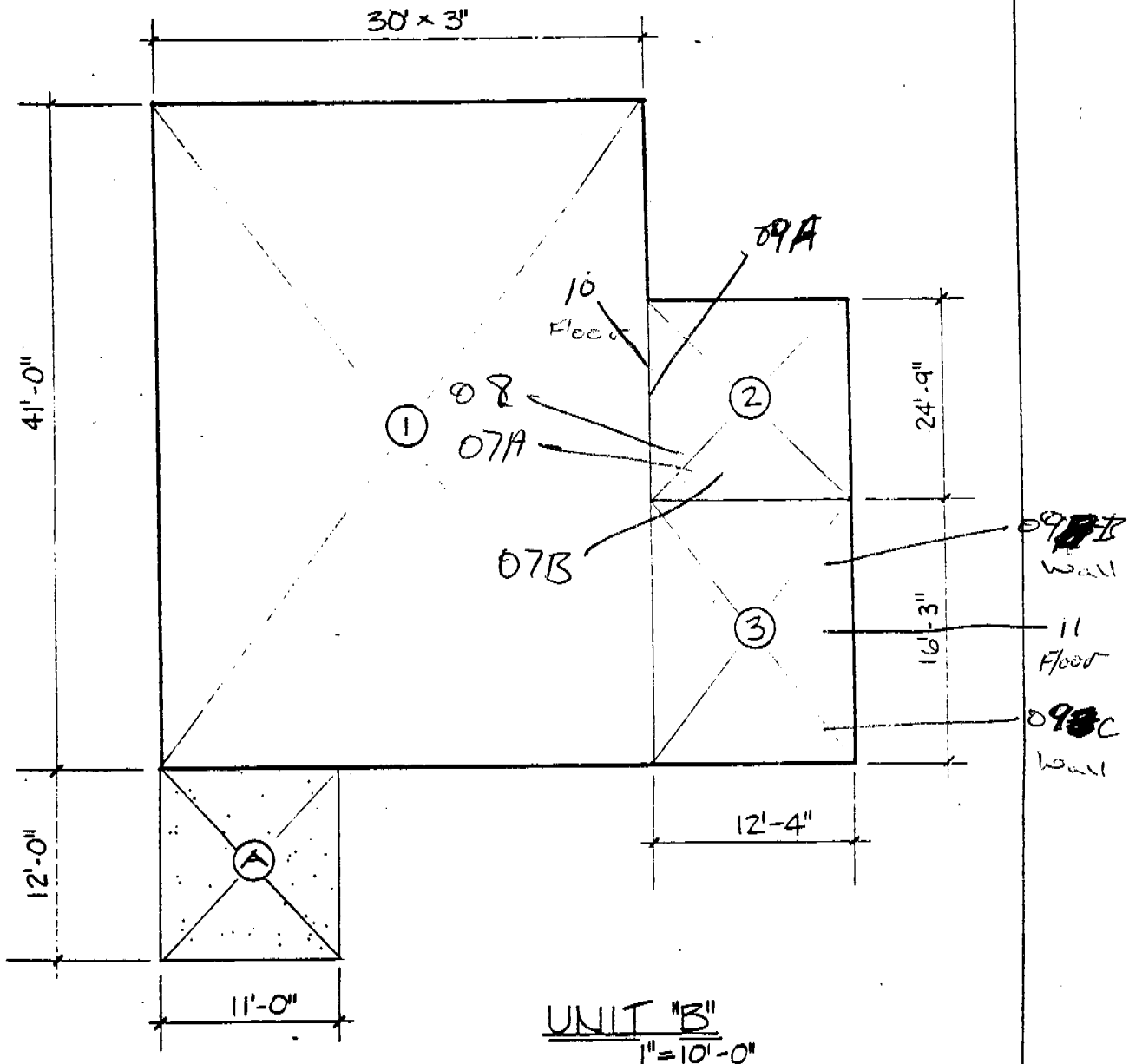
①	STORAGE (BOILER ROOM)	14.66' x 16.5'	241.89
②	TOILETS	15.75' x 16.5'	241.89
③	CLASSROOMS (2)	30.42' x 32.0' x 2	1946.88
④	WORK & OFFICE	30.42' x 16.5'	501.93
		SUB TOTAL ϕ	<u>2932.59</u>
Ⓐ	COVERED CORRIDOR	38.74' x 8.33' x .33	106.49
Ⓑ	COVERED CORRIDOR	8.33' x 84.0' x .33	230.91
Ⓒ	COVERED CORRIDOR	34.66' x 12.0' x .33	137.25
		SUB TOTAL ϕ	<u>474.65</u>
		TOTAL ϕ	<u>3407.24</u>

Paul J. ...

NORD ELEMENTARY SCHOOL
 CHICO UNIFIED SCHOOL DISTRICT
 CHICO, BUTTE CO., CALIFORNIA

DIAGRAM OF BUILDING AREA

EXISTING (1-A)
 BASIC PLANS (2-A)
 FINAL PLANS (3-A)



UNIT "B"
 1" = 10'-0"

①	MULTI PURPOSE	30.25' x 41.0'	1240.25'
②	STORAGE	12.33' x 24.75'	305.75'
③	KITCHEN	12.33' x 16.25'	+200.36'
			∅ 1746.36
Ⓐ	COVERED CORRIDOR	11.0 x 12.0' x .33	43.56'
			TOTAL ∅ 1789.92'

ABOVE IS MEASURED IN ACCORDANCE WITH ART. 2022
 CHAPTER 8, TITLE 9, CALIF. ADMIN. CODE
 ARCHITECT

DATE: 3-24-87 SHEET 4 OF 5
 OFFICE OF THE STATE ARCHITECT

Paul Henderson

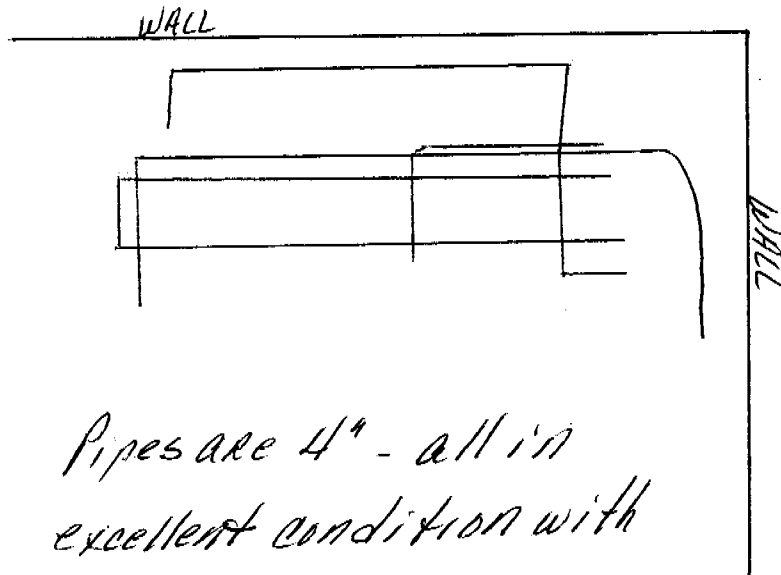


~ 30' 4" O.D pipe

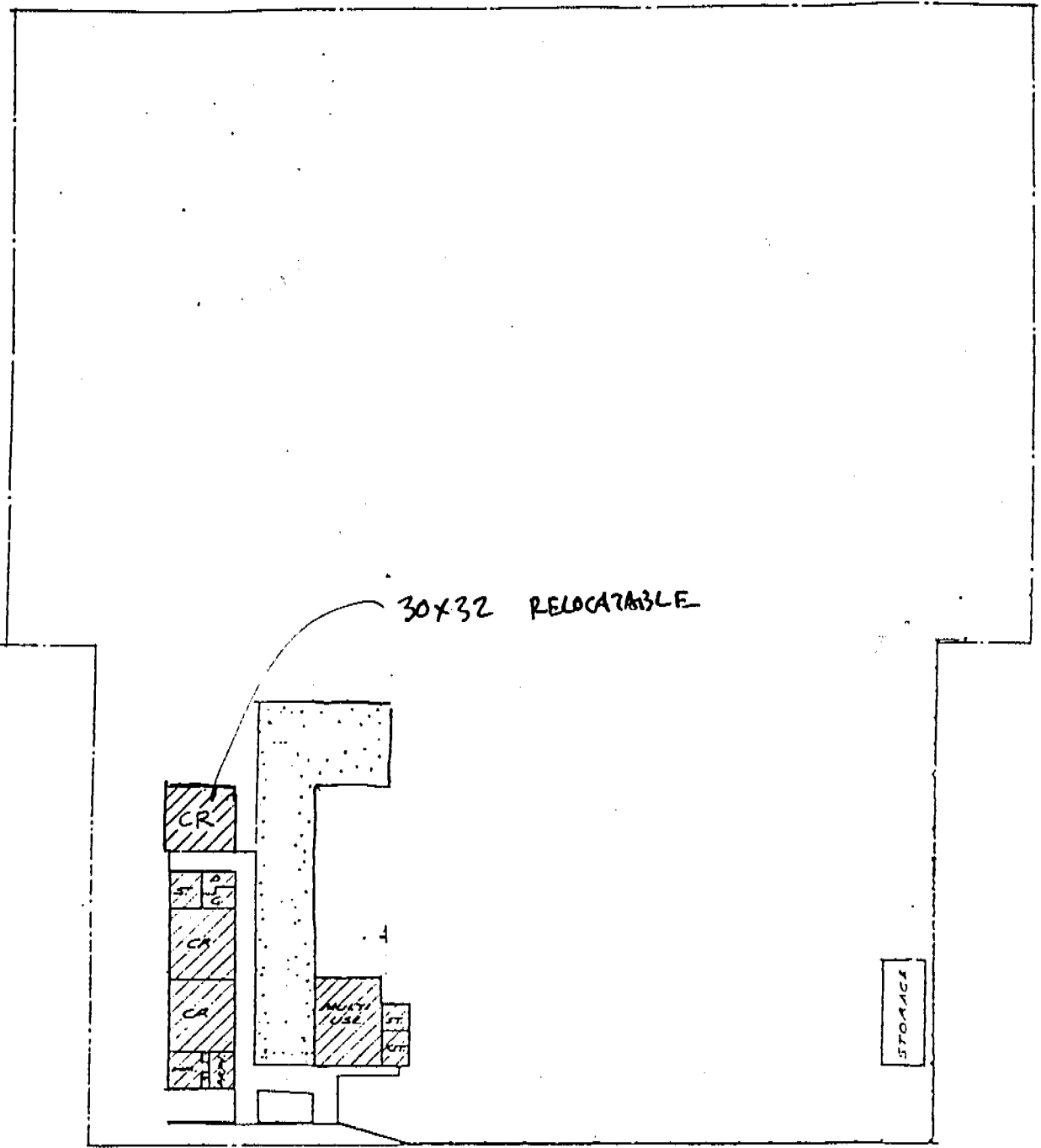
Boiler Room
Rm 1

door

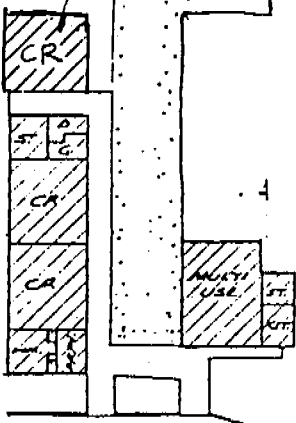
Unit B Nord Elementary School
Room 2



Pipes are 4" - all in
excellent condition with
EASY ACCESS



30x32 RELOCATABLE



STORAGE



CALIFORNIA STREET

NORD SCHOOL

Scale 1" = 10' 0"



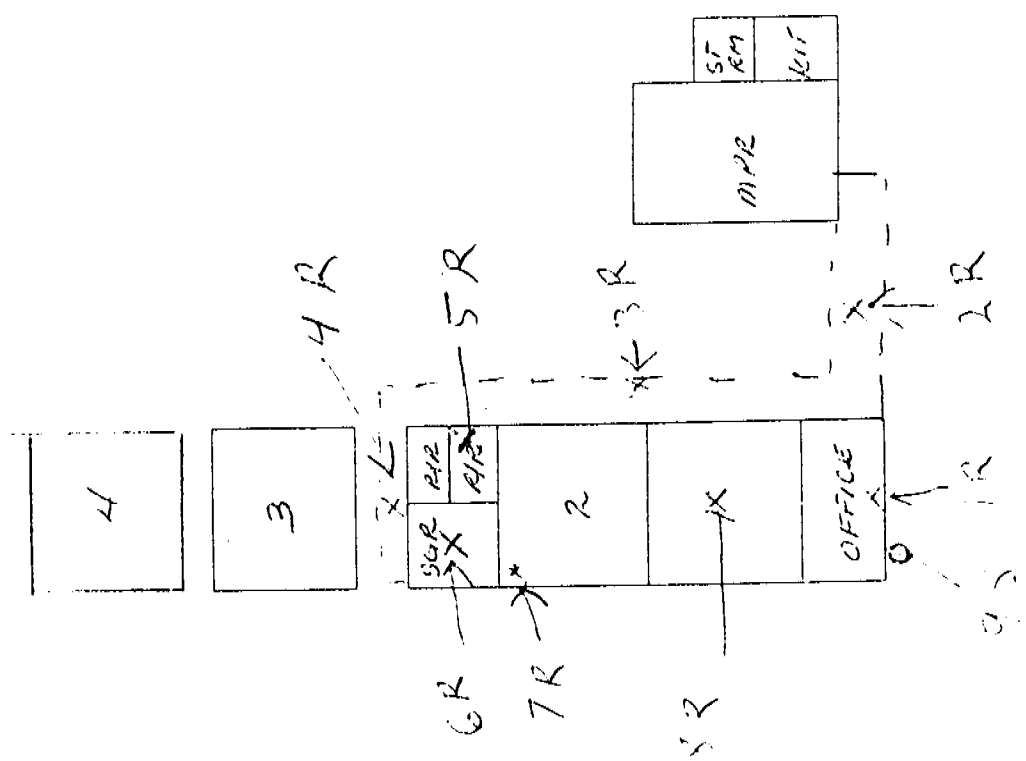
**THOMSON & HENDRICKS
ARCHITECTS AND PLANNERS**

Paul Hendricks, A.I.A.

CHICO

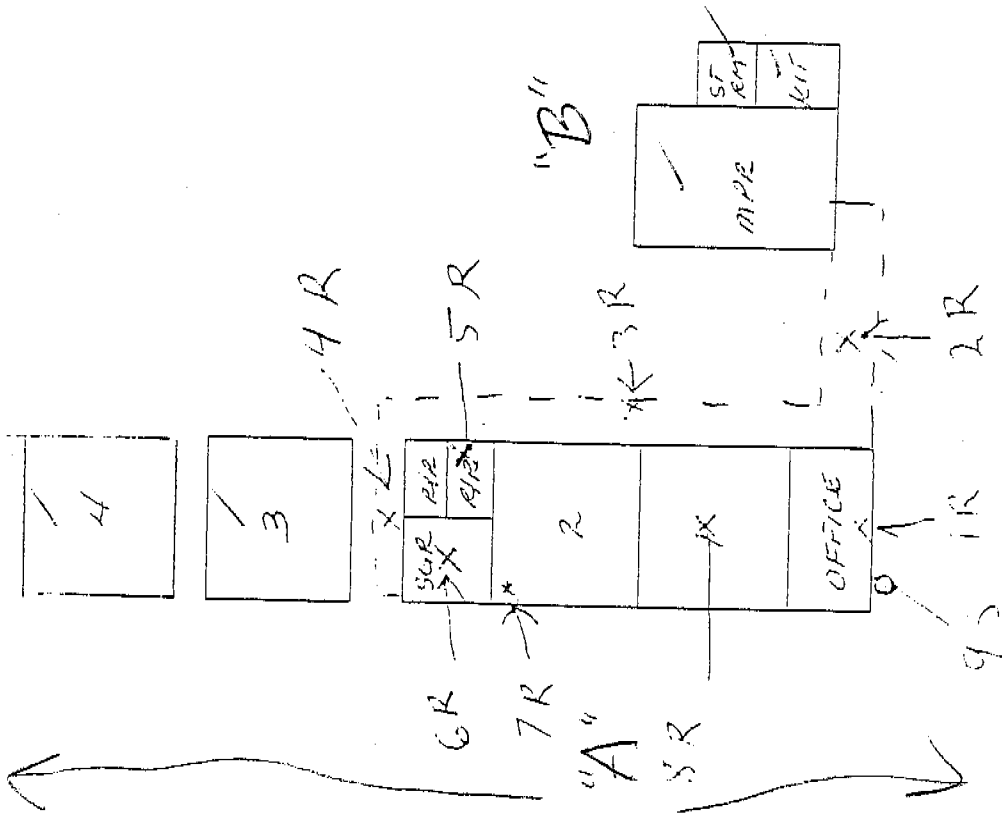
CALIFORNIA

17.01
1-78



NORD ELEMENTARY

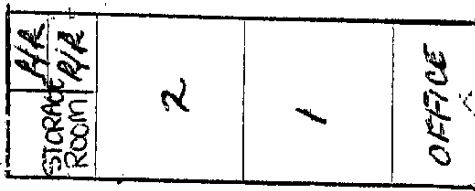
1-2-78 17.01



Current MAP
 5/16/61
 Jem

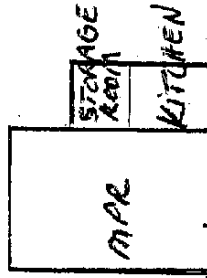


NORD ELEMENTARY



042004

"B"



Current MAP



NORD ELEMENTARY