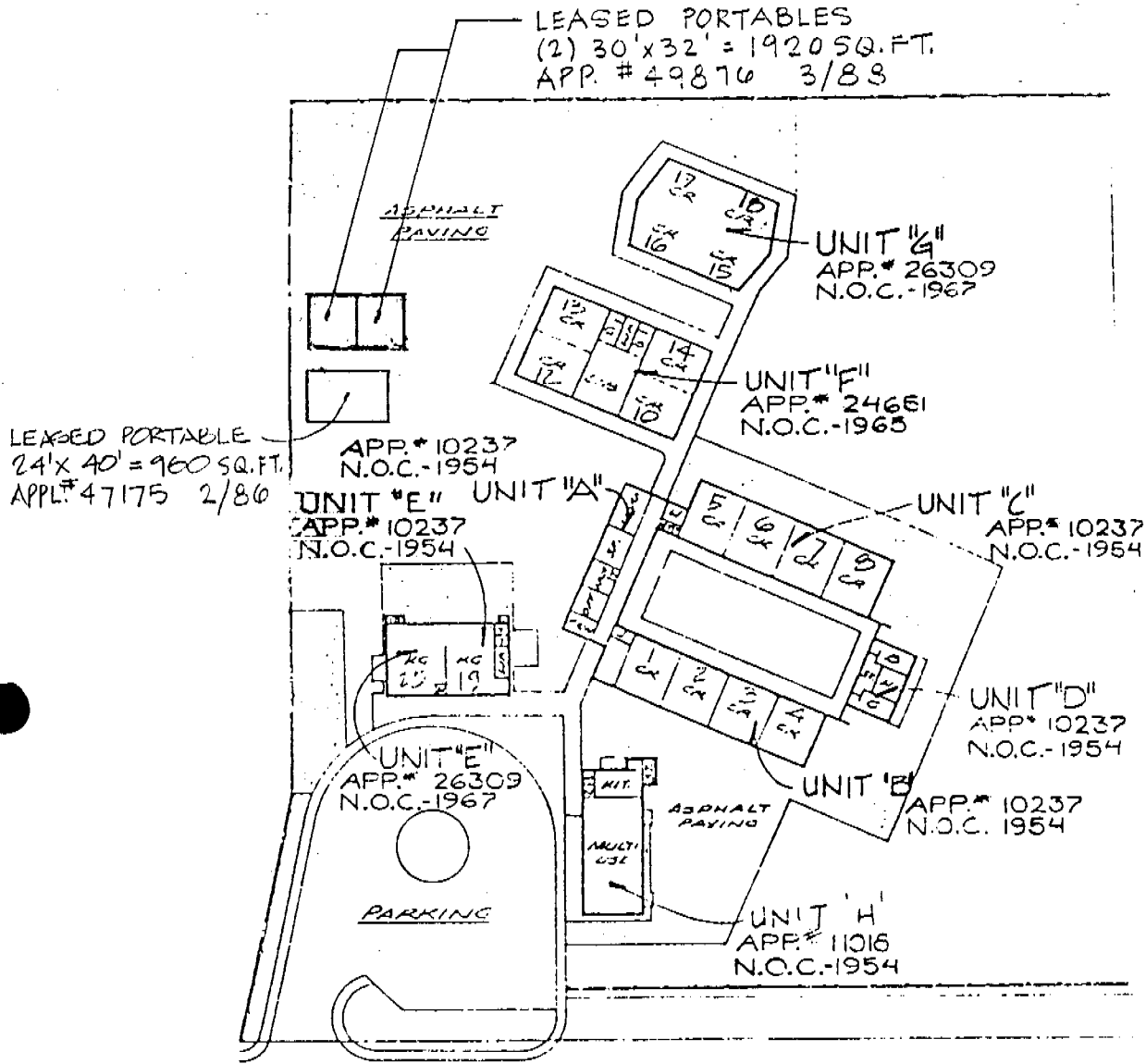


PARKVIEW ELEMENTARY SCHOOL
 CHICO UNIFIED SCHOOL DISTRICT
 CHICO, BUTTE CO., CALIFORNIA

DIAGRAM OF BUILDING AREA

- EXISTING (1-A)
- BASIC PLANS (2-A)
- FINAL PLANS (3-A)

LEASED PORTABLES
 (2) 30'x32' = 1920 SQ. FT.
 APP. # 49876 3/88



EAST EIGHTH STREET



PARKVIEW SCHOOL

Scale 1" = 10'

ABOVE IS MEASURED IN ACCORDANCE WITH ART. 2022
 SUBCHAPTER 8, TITLE 5, CALIF. ADMIN. CODE
 ARCHITECT

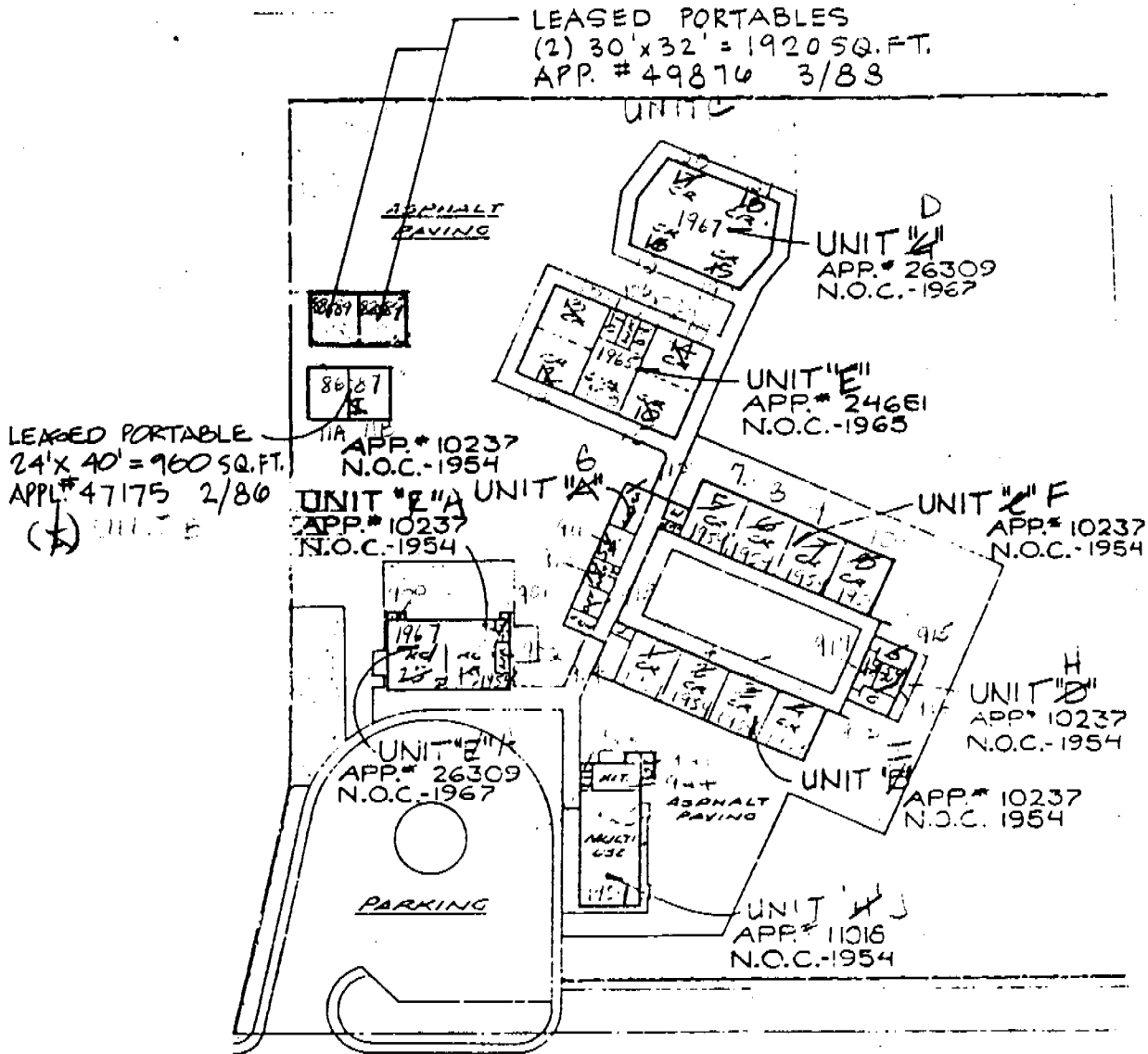
DATE: 10-1-88 SHEET 1 OF 7
 OFFICE OF THE STATE ARCHITECT

[Handwritten signature]

PARKVIEW ELEMENTARY SCHOOL
 CHICO UNIFIED SCHOOL DISTRICT
 CHICO, BUTTE CO., CALIFORNIA

DIAGRAM OF BUILDING AREA

- EXISTING (1-A)
- BASIC PLANS (2-A)
- FINAL PLANS (3-A)



EAST EIGHTH STREET



PARKVIEW SCHOOL

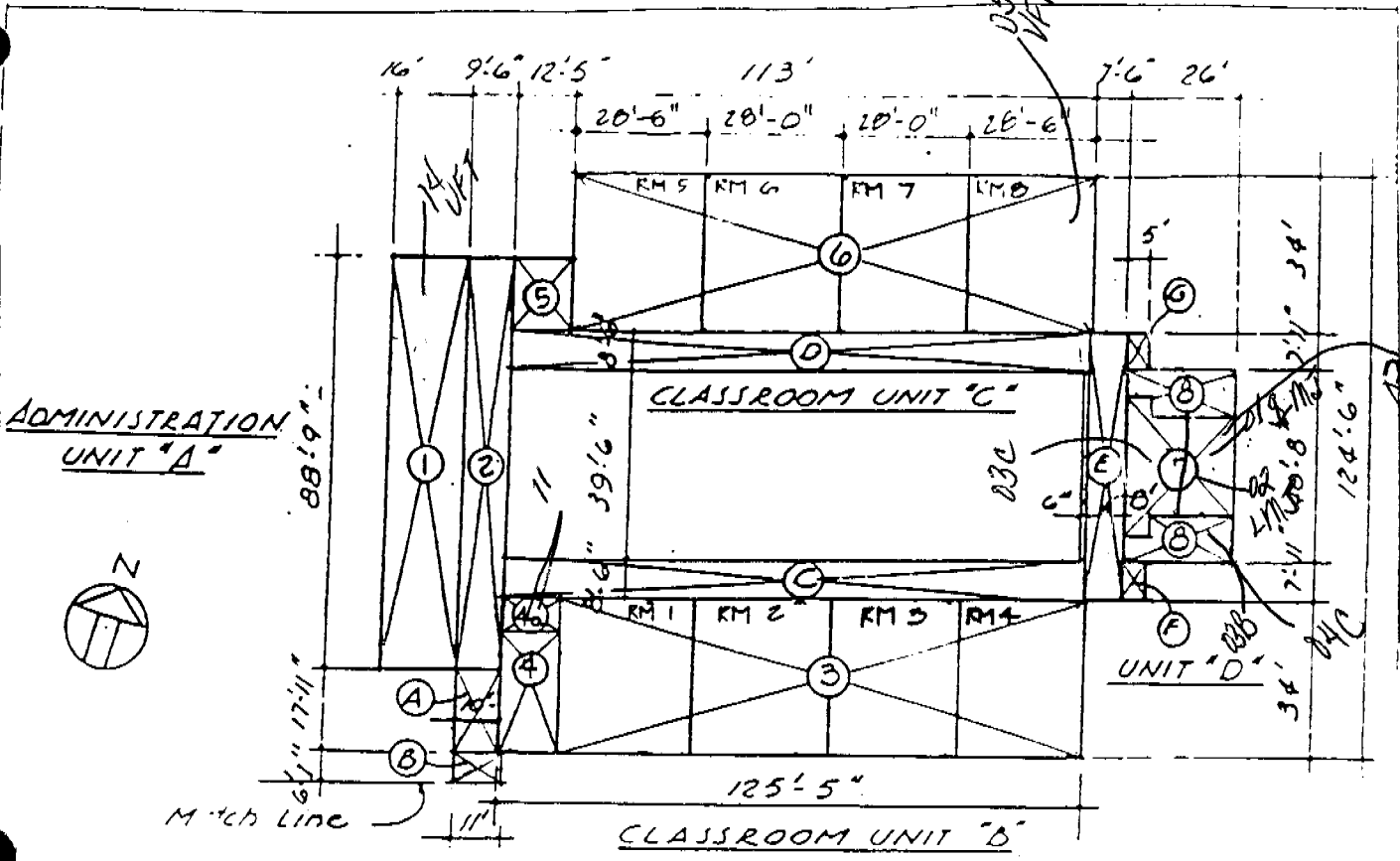
Scale 1/4" = 1'-0"

ABOVE IS MEASURED IN ACCORDANCE WITH ART. 2022
 SUBCHAPTER 8, TITLE 5, CALIF. ADMIN. CODE
 ARCHITECT

DATE: 10-1-88 SHEET 1 OF 7
 OFFICE OF THE STATE ARCHITECT

[Handwritten signature]

RECEIVED OCT 24 1988



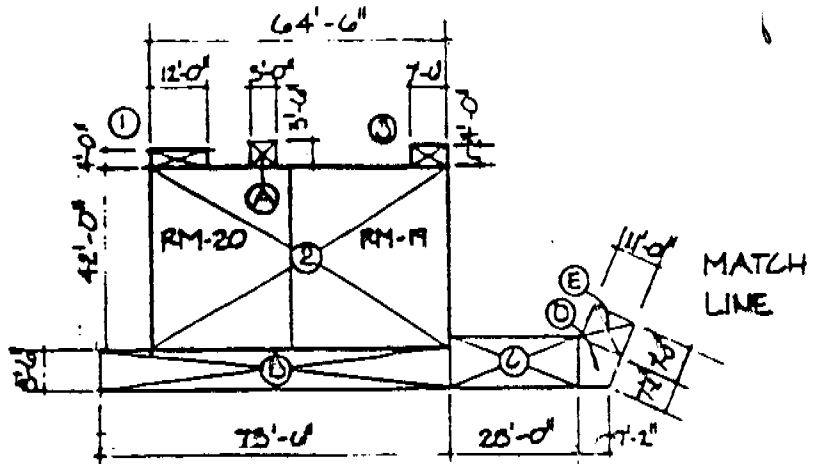
FILE:SPCH UNITS A, B, C, AND D PARKVIEW

NO.	DESCRIPTION	WIDTH	LENGTH	FACTOR	AREA (S.F.)
1	ADMINISTRATION	16	88.75	1	1420
2	ENCLOSED CORRIDOR	9.5	88.75	2	1686.25
3	CLASSROOMS (4)	113	34	1	3842
4	TEACHERS	12.42	26.5	1	329.13
4a	JANITOR	12.42	7.5	1	93.15
5	STAFF TOILET	12.42	16.17	1	200.83
6	CLASSROOMS (4)	113	34	1	3842.00
7	HEATER/STORAGE	4.5	24	1	108.00
		16	21.5	1	344.00
8	BOYS & GIRLS TOIET	8.33	4.5	1	37.49
		12.33	21.5	1	265.10
SUB TOTAL					12167.94
A	COVERED CORRIDOR	10.25	17.92	0.33	60.61
B	COVERED CORRIDOR	11	6.08	0.33	22.07
C	COVERED CORRIDOR	124.5	8.5	0.33	349.22
D	COVERED CORRIDOR	124.5	8.5	0.33	349.22
E	COVERED CORRIDOR	8.5	56.5	0.33	158.48
F	COVERED CORRIDOR	5	8	0.33	13.20
G	COVERED CORRIDOR	5	8	0.33	13.20
SUB TOTAL					966.01
TOTAL					13133.95

[Handwritten Signature]

L.I.N.E. = 19' must be kept
 S.I.M.O. = 20' must be kept

KINDERGARTEN
UNIT #E
 SCALE 1"=40'



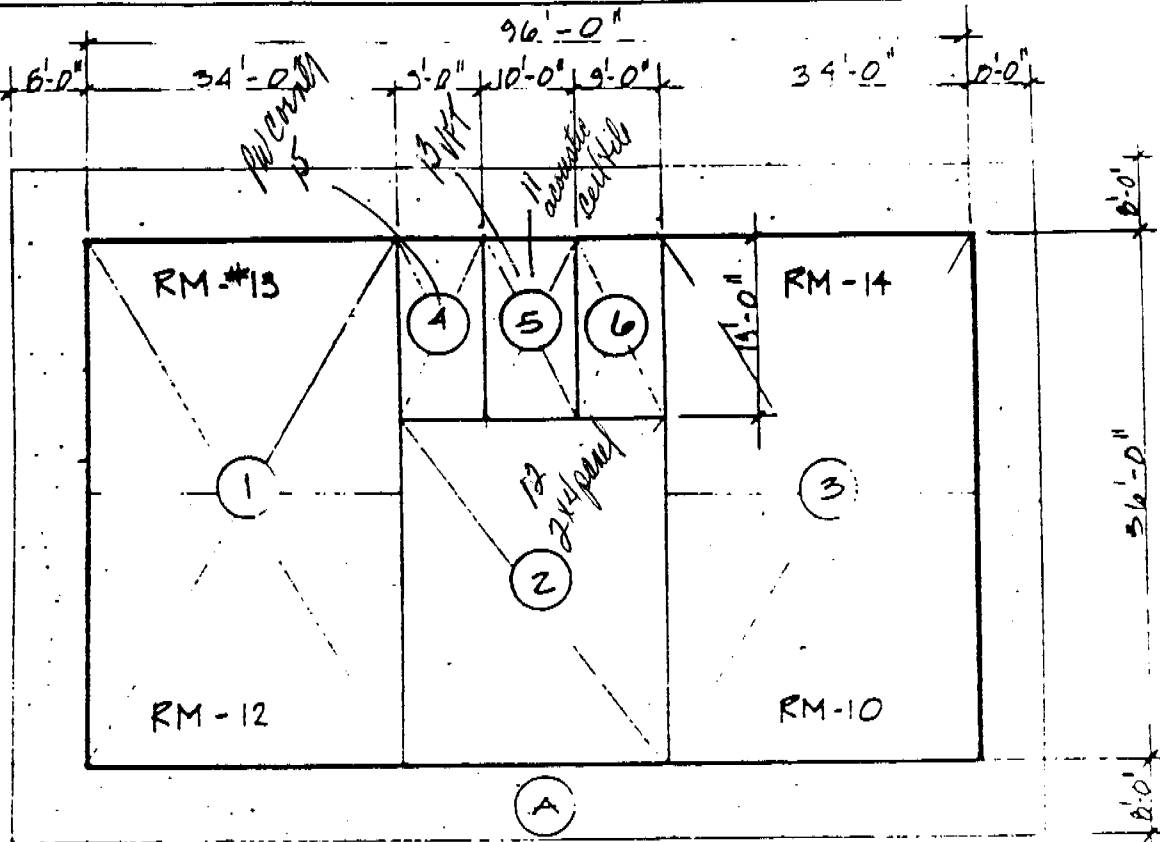
	<u>DESCRIPTION</u>	<u>AREA</u>	<u>SQUARE FT.</u>
①	LAVS.	4.0' x 12.0'	48.0'
②	CLASSRMS. (2)	42.0' x 64.0'	2688.0'
③	STORAGE	7.5' x 4.0'	30.0'
			<hr/> 2766.0'
Ⓐ	COVERED CORRIDOR	5.0' x 5.5' = 1/3	9.06
Ⓑ	" "	75.5' x 2.5' = 1/3	211.78
Ⓒ	" "	20.0' x 11.0' = 1/3	101.64
Ⓓ	" "	7.16' x 11.0' = 1/3	25.99
Ⓔ	" "	7.66' x 11.0' = 1/3	27.81
			<hr/> 376.3

Paul [Signature]

PARKVIEW ELEMENTARY SCHOOL
 CHICO UNIFIED SCHOOL DISTRICT
 CHICO, BUTTE CO., CALIFORNIA

DIAGRAM OF BUILDING AREA

EXISTING (1-A)
 BASIC PLANS (2-A)
 FINAL PLANS (3-A)



UNIT 'F'
 1" = 20'-0"

1. CLASSRM.(2)	-	34.0 x 56.0	=	1904
2. LIBRARY	-	28.0 x 37.0	=	1036
3. CLASSRM.(2)	-	34.0 x 56.0	=	1904
4. GIRLS LAV	-	19.0 x 9.0	=	171
5. WORK RM.	-	19.0 x 10.0	=	190
6. BOYS LAV.	-	19.0 x 9.0	=	171
				<u>5276 #</u>
A. COVERED CORR.	-	(96+96+72+72)(0)/3		857.04
				<u>6263.04 #</u> TOTAL

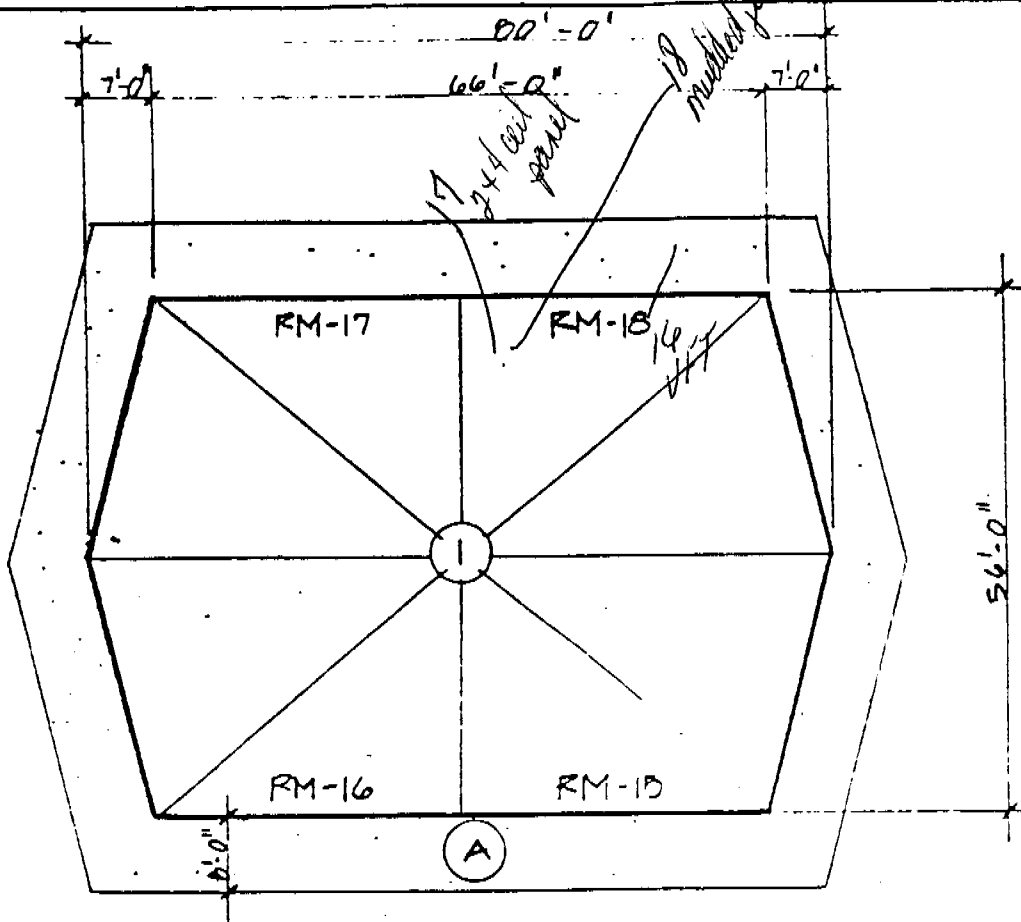
ABOVE IS MEASURED IN ACCORDANCE WITH ART. 2022
 SUBCHAPTER 8, TITLE 5, CALIF. ADMIN. CODE
 ARCHITECT

DATE: 3-25-87 SHEET 4 OF 7
 OFFICE OF THE STATE ARCHITECT

PARKVIEW ELEMENTARY SCHOOL
 CHICO UNIFIED SCHOOL DISTRICT
 CHICO, BUTTE CO., CALIFORNIA

DIAGRAM OF BUILDING AREA

- EXISTING (1-A)
- BASIC PLANS (2-A)
- FINAL PLANS (3-A)



UNIT 'S'
 1" = 20'-0"

1. CLASSRMS(4) 56.0 x 73.0 = 4,000 #
 A. COVERED CORR. $(80+80+56+56)(6) \div 3 = 718.08$
4,806.08 #1 = TOTAL

ABOVE IS MEASURED IN ACCORDANCE WITH ART. 2022
 SUBCHAPTER 8, TITLE 5 CALIF. ADMIN. CODE
 ARCHITECT

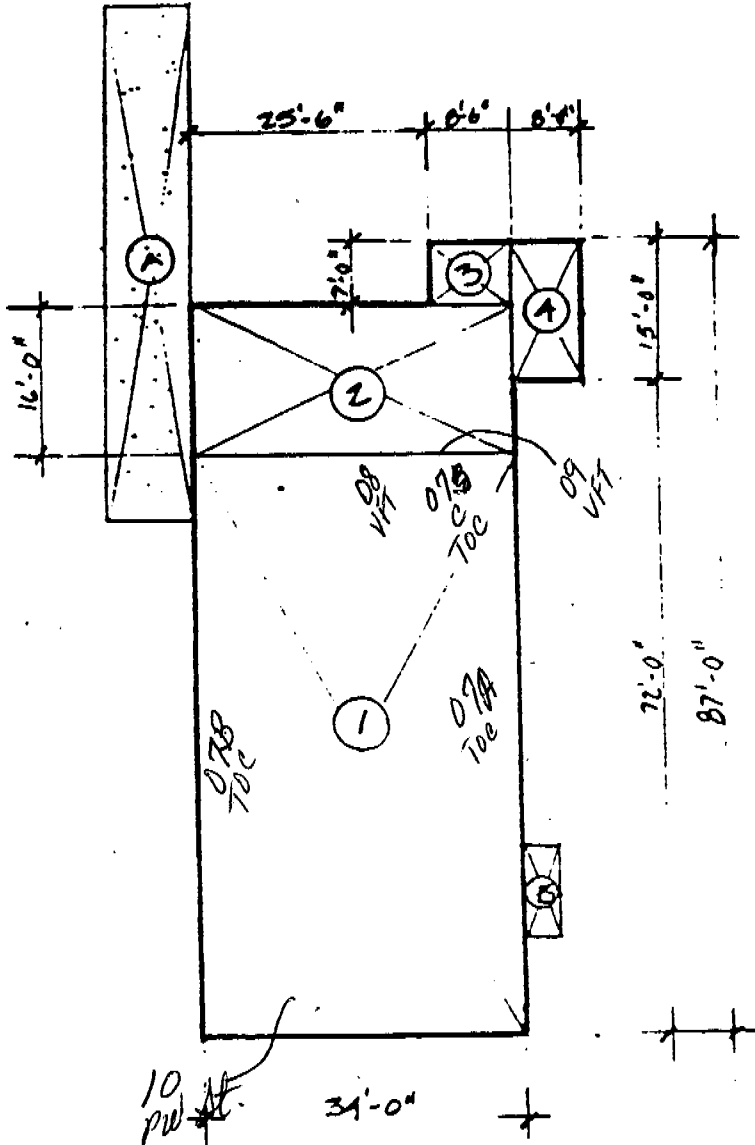
DATE: 3-25-87 SHEET 5 OF 7
 OFFICE OF THE STATE ARCHITECT

Paul [Signature]

PARKVIEW ELEMENTARY SCHOOL
 CHICO UNIFIED SCHOOL DISTRICT
 CHICO, BUTTE CO., CALIFORNIA

DIAGRAM OF BUILDING AREA

EXISTING (1-A)
 BASIC PLANS (2-A)
 FINAL PLANS (3-A)



UNIT 'H'
 1" = 20'-0"

$$\begin{array}{r} 54 \\ 12 \\ \hline 340 \end{array}$$

1. MULTI-USE RM.	—	64' x 34'	=	2176.0
2. KITCHEN	—	34' x 16'	=	544.0
3. ENTRY	—	7' x 8'-6"	=	59.5
4. STORAGE	—	8' x 15'	=	120.0
A COVERED CORR	—	1/3 x 36' x 9'-6"	=	175.56
B. " "	—	1/3 x 4' x 10'	=	13.20
			=	<u>188.76</u>

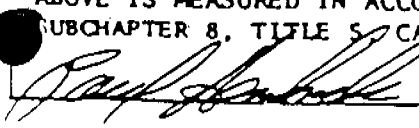
ABOVE IS MEASURED IN ACCORDANCE WITH ART. 2022
 SUBCHAPTER 8, TITLE 5, CALIF. ADMIN. CODE
 ARCHITECT

DATE: 3-25-87 SHEET 6 OF 7
 OFFICE OF THE STATE ARCHITECT

Paul J. [Signature]

SUMMARY OF AREAS

<u>UNIT</u>	<u>TOTAL AREA</u>
UNIT "A", "B", "C", "D" COVERED CORRIDORS @ 1/3	12,167.94 966.01
UNIT "E" COVERED CORRIDORS @ 1/3	2766.00 376.30
UNIT "F" COVERED CORRIDORS @ 1/3	5,376.00 887.04
UNIT "G" COVERED CORRIDORS @ 1/3	4,088.00 718.08
UNIT "H" COVERED CORRIDORS @ 1/3	2,899.50 188.76
TOTAL =	30,433.63

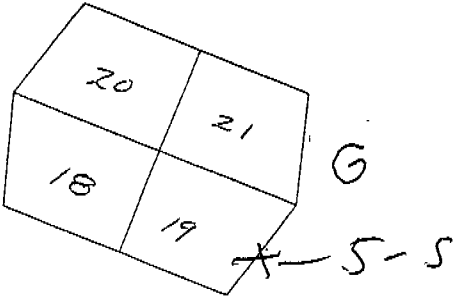


24

23

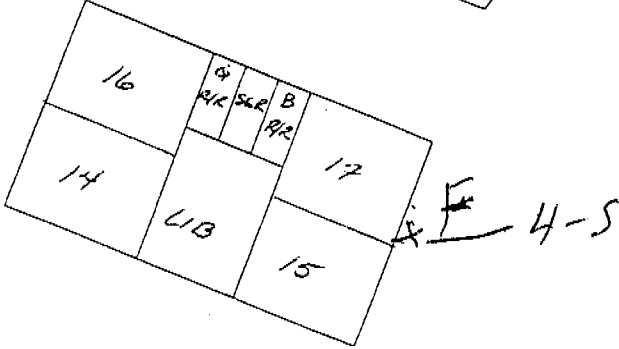
22

25

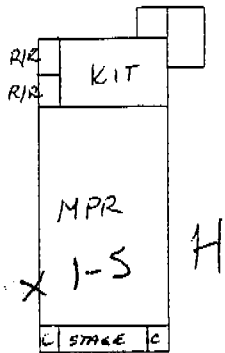
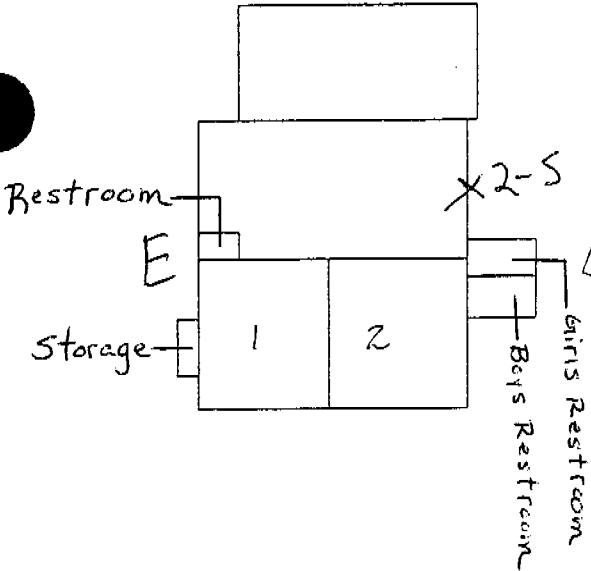
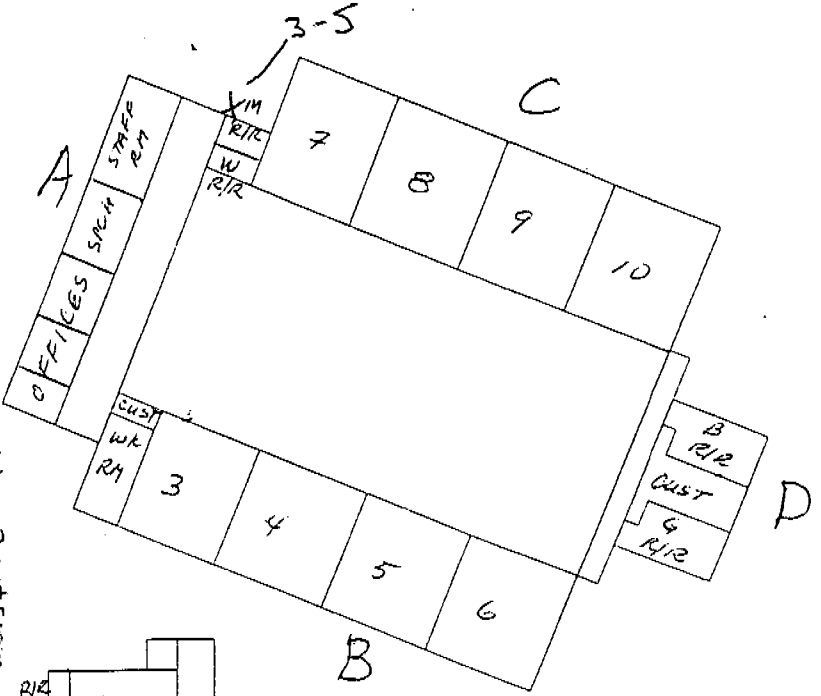


12

13

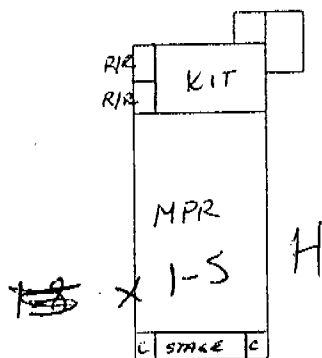
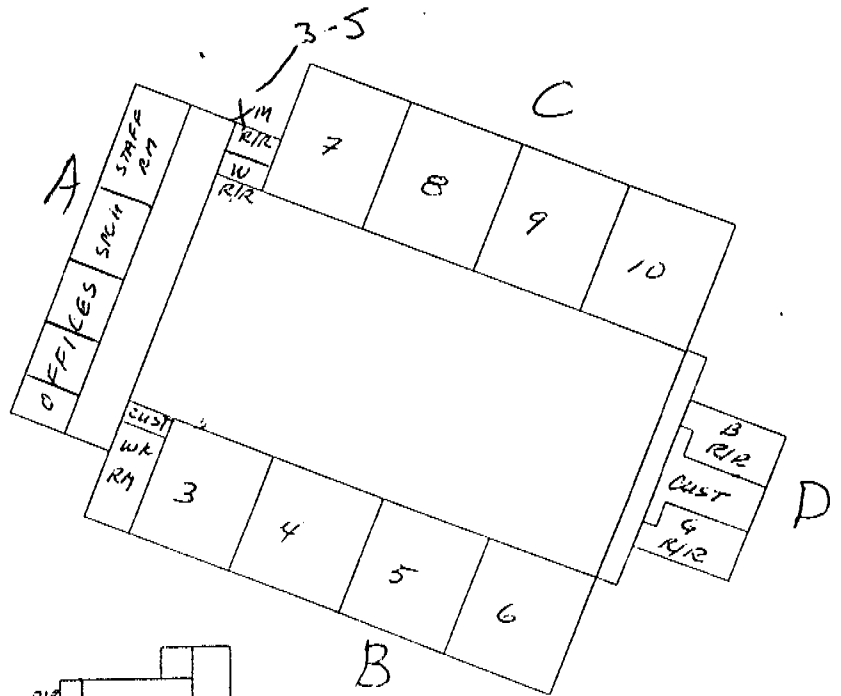
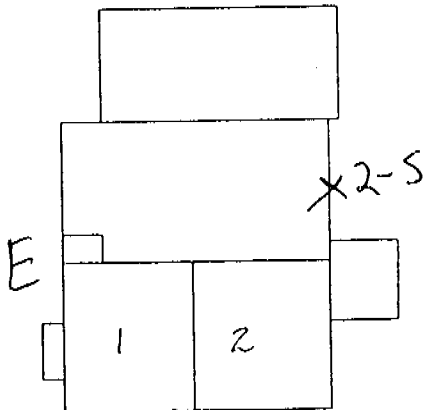
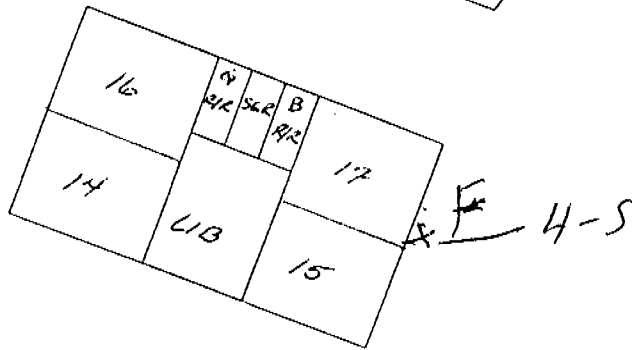
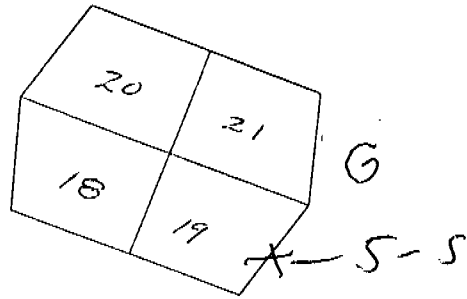
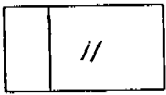
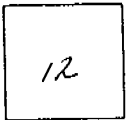
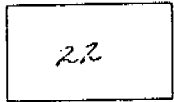
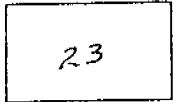


//	//
A	//



4-24-01
 Cory Sanders

PARKVIEW ELEMENTARY

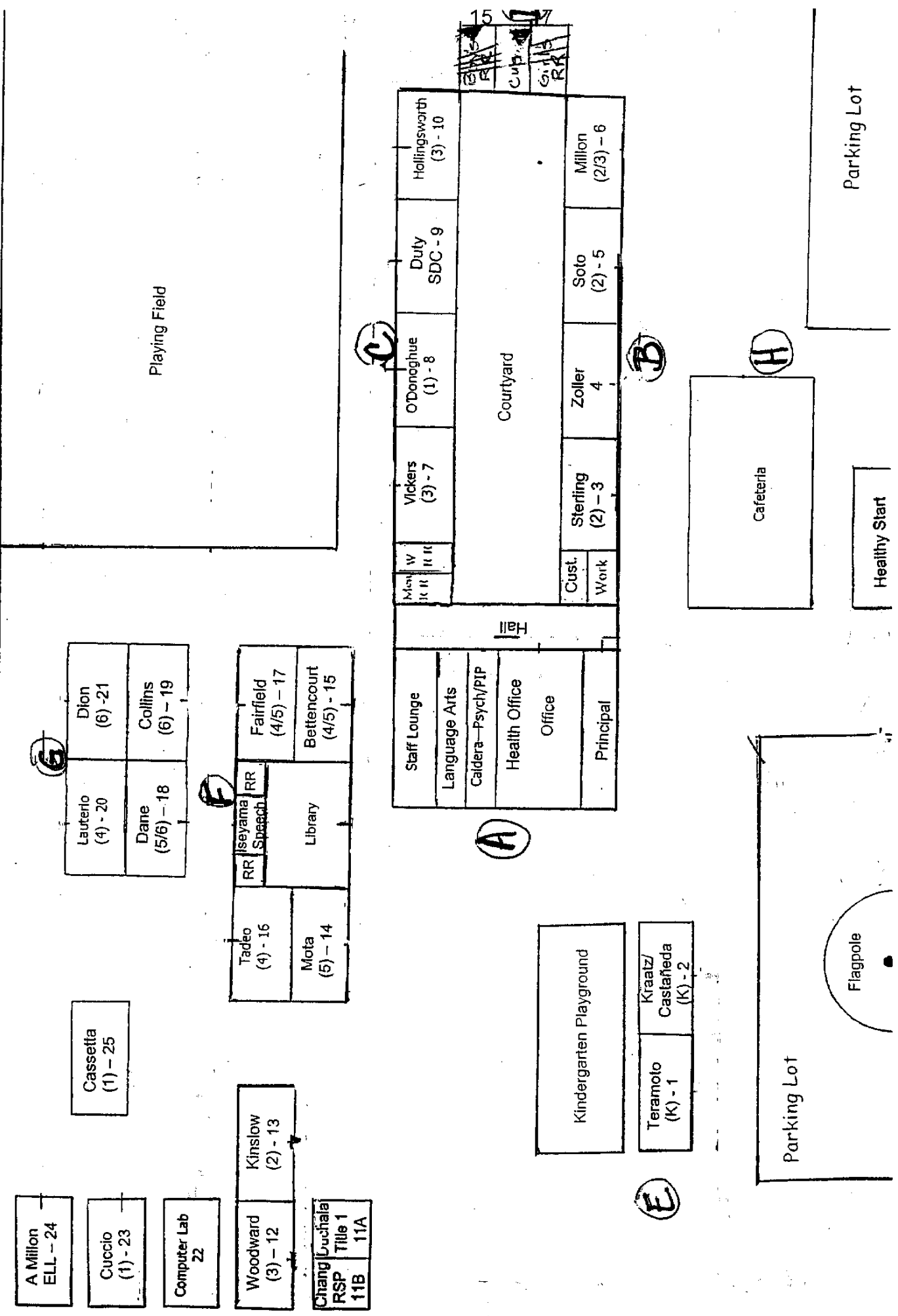


PARKVIEW ELEMENTARY

PARKVIEW MAP

FIRE DRILL ESCAPE ROUTES

342 I-5 SECTION 84
04/2004



A Million
ELL - 24

Cuccio
(1) - 23

Computer Lab
22

Woodward
(3) - 12

Chang Luchala
RSP Title 1
11B 11A

Cassetta
(1) - 25

Lauterio
(4) - 20

Dane
(5/6) - 18

Dion
(6) - 21

Collins
(6) - 19

Kinslow
(2) - 13

Tadeo
(4) - 16

Mota
(5) - 14

Iseiyama RR
Speech

Library

Fairfield
(4/5) - 17

Bettencourt
(4/5) - 15

Men RR

W RR

Staff Lounge

Language Arts

Caldera - Psych/PIP

Health Office

Office

Principal

Vickers
(3) - 7

O'Donoghue
(1) - 8

Duty
SDC - 9

Hollingsworth
(3) - 10

Courtyard

Cust. Work

Sterling
(2) - 3

Zoller
4

Soto
(2) - 5

Millon
(2/3) - 6

15
17
16
14
13
12
11
10
9
8
7
6
5
4
3
2
1

Kindergarten Playground

Teramoto
(K) - 1

Kraatz/
Castafieda
(K) - 2

Cafeteria

Parking Lot

Flagpole

Parking Lot

Healthy Start