

HMS, Inc.

HAZARD MANAGEMENT SERVICES, INC.

4200 Rocklin Rd., Ste. 11A
Rocklin, CA 95677-2860
(916) 632-6800 • (916) 632-6841 Fax

May 26, 2004

Mr. Kip Hansen
Chico Unified School District
1163 E. Seventh Street
Chico, CA 95928

RE: Fifth Triennial AHERA Three-Year Reinspection

Dear Mr. Hansen:

Enclosed is the data obtained from the fifth AHERA three-year reinspection Hazard Management Services, Inc. (HMS, Inc.) conducted between April 14 and May 4, 2004. The documents included with this letter are the "Three-Year Reinspection Homogeneous ACBM Material Records" covering all buildings known from the original inspection to contain ACBM. The sites enclosed are Chico Junior High, Chico Senior High, Hooker Oak Elementary, Pleasant Valley High, and Sierra View Elementary Schools.

You should review the updated Homogeneous Materials Reports to familiarize yourself with the current status of asbestos containing materials and identified suspect asbestos materials. It is the District's responsibility to assure that the school's site copy of the Management Plan is up to date and consistent with the District's Management Plan for that site. This is very important and if not done can cause the District to be penalized during an EPA site visit or investigation.

HMS, Inc. wants to remind you that materials containing "trace" amounts of asbestos must be considered in the event of renovations or demolitions. Although building materials containing trace amounts of asbestos (<1%) are not regulated under EPA, Cal/OSHA does regulate work practices with materials containing 0.1% asbestos. The original AHERA inspection contains information regarding materials with trace amounts of asbestos.

When you provide your annual notification to parents and staff, include information regarding this three-year reinspection. Enclosed is a suggested format for your notification letter. Please note that you must include in your Management Plans a description of the steps you take to notify. It is also important that your Management Plans be updated after any and all actions conducted which impact asbestos containing materials.

Please remember that HMS, Inc. did not inspect new buildings or portable classrooms which were placed on the District sites since the original EPA AHERA inspection. It is the District's responsibility to obtain letters of certification from the Architect, Construction Superintendent, or manufacturer of new building materials, indicating there is no asbestos in the new buildings (constructed after October 12, 1988) or new building materials. A copy of these certification letters must be included in your management plans, both at the school site and at the LEA Designees office site. It is still required of School Districts to send a copy of these certification letters to the US EPA AHERA unit, Region IX in San Francisco.

HMS, Inc.

Mr. Kip Hansen
Chico Unified School District
May 26, 2004
Page Two

HMS, Inc. was unable to confirm new information found in the updated inspection reports provided by the District, which reported the removal of materials and sampling of materials performed by the District.

Since HMS, Inc. was not provided with the supporting documentation pertaining to the removal and sampling completed by the District, any and all changes from the last 3 year reinspections as to the removal of previously identified "assumed" or asbestos containing materials, or sample result changes are the sole responsibility of the District. By submitting this finalized report, HMS, Inc. is neither confirming or denying these changes.

It is not necessary to send a copy of the three-year reinspection to the OPSC or EPA. However, the report should be included in your Management Plan. I want to thank you for your cooperation. If you have any questions, please feel free to contact me at (916) 632-6800.

Sincerely,

John Angi
Certified Asbestos Consultant
CAC #03-3330

Enclosures

RECORD OF FRIABLE AND NONFRIABLE ACM
(FORM B)

Inspection Date(s) April 20, 2004

THREE-YEAR REINSPECTION

SCHOOL Sierra View School					CDS CODE 04-61424-6003107
ADDRESS (NUMBER) (STREET) (CITY) (ZIP) 1598 Hooker Oak Avenue (NUMBER) (STREET) (CITY) (ZIP) Chico, CA 95926					SCHOOL PHONE NUMBER (530) 891-3117

-IMPORTANT-

Each building and functional space with friable ACBM or friable assumed ACBM listed on this form requires completion of **FORM C** (PHYSICAL AND HAZARD ASSESSMENT OF FRIABLE ACBM OR FRIABLE ASSUMED ACBM). Indicate location of material on blueprint, diagram or narrative in square or linear feet, and attach a copy (Sec. 763.93).

LINE	BUILDING NAME & FUNCTIONAL SPACE (Indicate Address if Different From Above)	CHECK ONE			CHECK ONE			
		SUR-FACING	TSI	MISC	ACBM		ASSUMED ACBM	
					FRIABLE	NON-FRIABLE	FRIABLE	NON-FRIABLE
1.	A	X	X					X
2.	B		X	X				X
3.	C		X	X				X
4.	D	X	X	X		X		X
5.	E		X	X		X		X
6.	F	X	X	X		X		X
7.	G	X	X	X		X		X
8.	H			X				X
9.	I			X				X
10.	PORTABLES 24-26			X				X
11.	PORTABLE 27			X				X
12.	STORAGE SHEDS 1 & 2 NO SUSPECT ACBM							
13.								
14.								
15.								
16.								
17.								

See attached "Homogeneous Materials Records" for all materials and their locations by building. On Form B all buildings are listed, and a summary of all non-friable and friable material is provided. Friable materials and their locations are listed separately under each building on Form B.

**THREE-YEAR REINSPECTION
HOMOGENEOUS ACBM RECORDS**

Date of Inspection: April 20, 2004

District: Chico Unified School District

Inspector: John Angi

School: Sierra View Elementary School

Building: A

Material Class	Material	Homo. Mat. #	% Asb.	F ² /L.F.	Location	Condition: Code & Comments	Friable Yes/No
S	WALL PLASTER	4	ASSUMED	1,000 S	GIRL'S & BOY'S RESTROOM & CUSTODIAN CLOSET	(1) (4) MINOR CRACKS.	N
T	TSI	98	ASSUMED	12 L	BOILER ROOM	(1)	N

CONDITION CODE

- General Condition: (1) Good (2) Damaged (3) Significantly Damaged (25% or more)
Change in Condition: (4) No (5) Yes (If Yes, explain under comments)
Abated: (6) Repaired (7) Removed (8) Encapsulated (9) Enclosed (10) Isolated & Restricted
Miscellaneous: (11) Inaccessible, no inspection data (12) Other (Explain under comments) (13) Non-Asbestos/Not Inspected

CONSULT ORIGINAL AND SUPPLEMENTARY INSPECTION REPORTS FOR MATERIALS WITH TRACE AMOUNTS OF ASBESTOS

**THREE-YEAR REINSPECTION
HOMOGENEOUS ACBM RECORDS**

Date of Inspection: April 20, 2004

District: Chico Unified School District

Inspector: John Angi

School: Sierra View Elementary School

Building: B

Material Class	Material	Homo. Mat. #	% Asb.	FT ² /L.F.	Location	Condition: Code & Comments	Friable Yes/No
T	TRANSITE PANELS	83	ASSUMED	16 PANELS	UNDER WINDOWS THROUGHOUT BUILDING	(1) (4)	N
M	12" VFT BLUE/WHITE	94	ASSUMED	500 S	WORKROOM & CLASSROOMS 18-21	(1) (4) STRIPS AT ROOM ENTRANCES WITH CARPET COVERING MOST OF THE FLOOR SPACE.	N
M	2' X 4' FCP	99	ASSUMED	4,000 S	WORKROOM & CLASSROOMS 18-21	(7) REPLACED ACCORDING TO CHICO USD RECORDS.	N/A
M	LINOLEUM	100	ASSUMED	50 S	RESTROOM	(12) COULD NOT LOCATE.	N
M	2' X 4' FCP	150	ASSUMED	4,000 S	WORKROOM & CLASSROOMS 18-21	(1) DISTRICT MUST CERTIFY AS NON ASBESTOS CONTAINING BUILDING MATERIAL.	N

CONDITION CODE

General Condition: (1) Good (2) Damaged (3) Significantly Damaged (25% or more)
Change in Condition: (4) No (5) Yes (If Yes, explain under comments)
Abated: (6) Repaired (7) Removed (8) Encapsulated (9) Enclosed (10) Isolated & Restricted
Miscellaneous: (11) Inaccessible, no inspection data (12) Other (Explain under comments) (13) Non-Asbestos/Not Inspected

CONSULT ORIGINAL AND SUPPLEMENTARY INSPECTION REPORTS FOR MATERIALS WITH TRACE AMOUNTS OF ASBESTOS

**THREE-YEAR REINSPECTION
HOMOGENEOUS ACBM RECORDS**

Date of Inspection: April 20, 2004

District: Chico Unified School District

Inspector: John Angi

School: Sierra View Elementary School

Building: C

Material Class	Material	Homo. Mat. #	% Asb.	F ² /L.F.	Location	Condition: Code & Comments	Friable Yes/No
T	TRANSITE PANELS	83	ASSUMED	4,500 S	STAFF ROOM & CLASSROOMS 13-17	(1) (4)	N
M	12" VFT BLUE/WHITE	94	ASSUMED	750 S	STAFF ROOM & CLASSROOMS 13-17	(1) (4) STRIPS AT ROOM ENTRANCES WITH CARPET COVERING THE MAJORITY OF FLOOR SPACE.	N
M	2' X 4' FCP	99	ASSUMED	4,500 S	STAFF ROOM & CLASSROOMS 13-17	(7) RECONSTRUCTED ACCORDING TO CHICO USD RECORDS.	N/A
M	LINOLEUM	100	ASSUMED	50 S	MEN'S & WOMEN'S RESTROOMS	(7) RECONSTRUCTED ACCORDING TO CHICO USD RECORDS.	N/A
M	2' X 4' FCP	150	ASSUMED	4,500 S	STAFF ROOM & CLASSROOMS 13-17	(1) DISTRICT MUST CERTIFY AS NON ASBESTOS CONTAINING BUILDING MATERIAL.	N
M	LINOLEUM	151	ASSUMED	50 S	MEN'S & WOMEN'S RESTROOMS	(1) DISTRICT MUST CERTIFY AS NON ASBESTOS CONTAINING BUILDING MATERIAL.	N

CONDITION CODE

General Condition: (1) Good (2) Damaged (3) Significantly Damaged (25% or more)
 Change in Condition: (4) No (5) Yes (If Yes, explain under comments)
 Abated: (6) Repaired (7) Removed (8) Encapsulated (9) Enclosed (10) Isolated & Restricted
 Miscellaneous: (11) Inaccessible, no inspection data (12) Other (Explain under comments) (13) Non-Asbestos/Not Inspected

CONSULT ORIGINAL AND SUPPLEMENTARY INSPECTION REPORTS FOR MATERIALS WITH TRACE AMOUNTS OF ASBESTOS

**THREE-YEAR REINSPECTION
HOMOGENEOUS ACBM RECORDS**

Date of Inspection: April 20, 2004

District: Chico Unified School District

Inspector: John Angi

School: Sierra View Elementary School

Building: D

Material Class	Material	Homo. Mat. #	% Asb.	F ² /L.F.	Location	Condition: Code & Comments	Friable Yes/No
S	PLASTER	3	1-5%	1,200 S	KITCHEN, STORAGE, AND MPR CHAIR STORAGE	(1) (4) (2) CRACKED AROUND AIR REGISTER.	N
T	PIPE WRAP	8	15-20%	13 L	MECHANICAL ROOM	(1) (4)	N
M	12" VFT BLUE/WHITE	94	ASSUMED	3,500 S	OFFICE HALLWAY & MPR	(7) REMOVED ACCORDING TO CHICO USD RECORDS.	N/A
M	12" ACT	97	ASSUMED	1,600 S	OFFICE HALLWAY CEILING & ALL THREE OFFICES	(7) REMOVED ACCORDING TO CHICO USD RECORDS.	N/A
T	TRANSITE PIPE	98	ASSUMED	20 L	MECHANICAL ROOM	(1) (4)	N
M	LINOLEUM TAN	152	ASSUMED	100 S	KITCHEN RESTROOM	(1) DISTRICT MUST CERTIFY AS NON ASBESTOS CONTAINING BUILDING MATERIAL.	N
M	DRYWALL	153	ASSUMED	UNDETERMINED	OFFICES	(1) DISTRICT MUST CERTIFY AS NON ASBESTOS CONTAINING BUILDING MATERIAL.	N
M	12" VFT BLUE/WHITE	154	ASSUMED	3,500 S	OFFICE HALLWAY & MPR	(1) DISTRICT MUST CERTIFY AS NON ASBESTOS CONTAINING BUILDING MATERIAL.	N
M	12" ACT	155	ASSUMED	1,600 S	OFFICE HALLWAY CEILING & ALL THREE OFFICES	(1) DISTRICT MUST CERTIFY AS NON ASBESTOS CONTAINING BUILDING MATERIAL.	N

CONDITION CODE

General Condition: (1) Good (2) Damaged (3) Significantly Damaged (25% or more)
 Change in Condition: (4) No (5) Yes (If Yes, explain under comments)
 Abated: (6) Repaired (7) Removed (8) Encapsulated (9) Enclosed (10) Isolated & Restricted
 Miscellaneous: (11) Inaccessible, no inspection data (12) Other (Explain under comments) (13) Non-Asbestos/Not Inspected

CONSULT ORIGINAL AND SUPPLEMENTARY INSPECTION REPORTS FOR MATERIALS WITH TRACE AMOUNTS OF ASBESTOS

**THREE-YEAR REINSPECTION
HOMOGENEOUS ACBM RECORDS**

Date of Inspection: April 20, 2004

Inspector: John Angi

District: Chico Unified School District

School: Sierra View Elementary School

Building: E

Material Class	Material	Homo. Mat. #	% Asb.	F ² /L.F.	Location	Condition: Code & Comments	Frable Yes/No
M	PLASTER	3	1-5%	500 S	CUSTODIAN CLOSET	(1) (4)	N
T	MUD JOINT	12	60-65%	30 L	BOILER ROOM	(1) (4)	N
M	DRYWALL & JOINT COMPOUND	96	ASSUMED	1,000 S	BOY'S & GIRL'S RESTROOMS	(7) REMOVED ACCORDING TO CHICO USD RECORDS.	N/A
M	DRYWALL & JOINT COMPOUND	150	ASSUMED	1,000 S	BOY'S & GIRL'S RESTROOMS	(1) DISTRICT MUST CERTIFY AS NON ASBESTOS CONTAINING BUILDING MATERIAL.	N

CONDITION CODE

General Condition: (1) Good (2) Damaged (3) Significantly Damaged (25% or more)
Change in Condition: (4) No (5) Yes (If Yes, explain under comments)
Abated: (6) Repaired (7) Removed (8) Encapsulated (9) Enclosed (10) Isolated & Restricted
Miscellaneous: (11) Inaccessible, no inspection data (12) Other (Explain under comments) (13) Non-Asbestos/Not Inspected

CONSULT ORIGINAL AND SUPPLEMENTARY INSPECTION REPORTS FOR MATERIALS WITH TRACE AMOUNTS OF ASBESTOS

**THREE-YEAR REINSPECTION
HOMOGENEOUS ACBM RECORDS**

Date of Inspection: April 20, 2004

District: Chico Unified School District

Inspector: John Angi

School: Sierra View Elementary School

Building: F

Material Class	Material	Homo. Mat. #	% Asb.	F ² /L.F.	Location	Condition: Code & Comments	Friable Yes/No
S	PLASTER	3	1-5%	400 S	SPEECH ROOM & BREAKROOM	(1) (4)	N
M	9" VFT GREEN	14	1-5%	4,000 S	CLASSROOMS 2-5, BREAKROOM, AND SPEECH ROOM	(1) (4)	N
T	TRANSITE PANELS	83	ASSUMED	16 PANELS	UNDER WINDOWS THROUGHOUT BUILDING	(1) (4)	N
M	12" ACT	17	ASSUMED	2,000 S	CLASSROOMS 2-5, BREAKROOM, AND SPEECH ROOM	(1) (4)	N

CONDITION CODE

General Condition: (1) Good (2) Damaged (3) Significantly Damaged (25% or more)
 Change in Condition: (4) No (5) Yes (If Yes, explain under comments)
 Abated: (6) Repaired (7) Removed (8) Encapsulated (9) Enclosed (10) Isolated & Restricted
 Miscellaneous: (11) Inaccessible, no inspection data (12) Other (Explain under comments) (13) Non-Asbestos/Not Inspected

CONSULT ORIGINAL AND SUPPLEMENTARY INSPECTION REPORTS FOR MATERIALS WITH TRACE AMOUNTS OF ASBESTOS

**THREE-YEAR REINSPECTION
HOMOGENEOUS ACBM RECORDS**

Date of Inspection: April 20, 2004

District: Chico Unified School District

Inspector: John Angi

School: Sierra View Elementary School

Building: G

Material Class	Material	Homo. Mat. #	% Asb.	F ² /L.F.	Location	Condition: Code & Comments	Friable Yes/No
S	PLASTER	3	1-5%	350 S	PIP ROOM	(1) (4)	N
M	9" VFT GREEN	14	1-5%	4,000 S	CLASSROOMS 8-11 & PIP ROOM	(1) (4)	N
T	TRANSITE PANELS	83	ASSUMED	16 PANELS	UNDER WINDOWS THROUGHOUT BUILDING	(1) (4)	N
M	2' X 4' FCP	95	ASSUMED	900 S	CLASSROOM 12 (PORTABLE)	(1) (4) SOME HOLES.	N
M	12" ACT	97	ASSUMED	2,400 S	CLASSROOMS 8-11	(1) (4)	N
M	LINOLEUM	100	ASSUMED	50 S	RESTROOM	(12) UNABLE TO LOCATE.	N
M	12" VFT WHITE	110	ASSUMED	250 S	CLASSROOM 12 (PORTABLE)	(1)	N

CONDITION CODE

General Condition: (1) Good (2) Damaged (3) Significantly Damaged (25% or more)
Change in Condition: (4) No (5) Yes (If Yes, explain under comments)
Abated: (6) Repaired (7) Removed (8) Encapsulated (9) Enclosed (10) Isolated & Restricted
Miscellaneous: (11) Inaccessible, no inspection data (12) Other (Explain under comments) (13) Non-Asbestos/Not Inspected

CONSULT ORIGINAL AND SUPPLEMENTARY INSPECTION REPORTS FOR MATERIALS WITH TRACE AMOUNTS OF ASBESTOS

**THREE-YEAR REINSPECTION
HOMOGENEOUS ACBM RECORDS**

Date of Inspection: April 20, 2004

District: Chico Unified School District

Inspector: John Angi

School: Sierra View Elementary School

Building: H

Material Class	Material	Homo. Mat. #	% Asb.	FT ² /L.F.	Location	Condition: Code & Comments	Fiabile Yes/No
M	DRYWALL	93	ASSUMED	2,100 S	CLASSROOM 6 (LAB), CLASSROOM 7 (RSP), AND CLASSROOM 1	(1) (4)	N
M	12" VFT	94	ASSUMED	600 S	CLASSROOM 6 (LAB) & CLASSROOM 7 (RSP)	(1) (4)	N
M	12" ACT	97	ASSUMED	600 S	LIBRARY	(1) (4)	N
M	2' X 4' FCP	99	ASSUMED	2,100 S	CLASSROOM 6 (LAB), CLASSROOM 7 (RSP), AND CLASSROOM 1	(1) (4)	N

CONDITION CODE

General Condition: (1) Good (2) Damaged (3) Significantly Damaged (25% or more)
 Change in Condition: (4) No (5) Yes (If Yes, explain under comments)
 Abated: (6) Repaired (7) Removed (8) Encapsulated (9) Enclosed (10) Isolated & Restricted
 Miscellaneous: (11) Inaccessible, no inspection data (12) Other (Explain under comments) (13) Non-Asbestos/Not Inspected

CONSULT ORIGINAL AND SUPPLEMENTARY INSPECTION REPORTS FOR MATERIALS WITH TRACE AMOUNTS OF ASBESTOS

**THREE-YEAR REINSPECTION
HOMOGENEOUS ACBM RECORDS**

Date of Inspection: April 20, 2004

District: Chico Unified School District

Inspector: John Angi

School: Sierra View Elementary School

Building: I

Material Class	Material	Homo. Mat. #	% Asb.	Ft ² /L.F.	Location	Condition: Code & Comments	Frangible Yes/No
M	LINOLEUM	102	ASSUMED	200 S	RESTROOMS	(1) (4)	N
M	12" VFT	105	ASSUMED	200 S	CLASSROOMS 22 & 23 AND WORKROOM	(1) (4) THESE ROOMS ARE PORTABLES WITH UNREADABLE I.D'S.	N
M	2' X 4' FCP	106	ASSUMED	1,200 S	CLASSROOMS 22 & 23 AND WORKROOM	(1) (4)	N

CONDITION CODE

General Condition: (1) Good (2) Damaged (3) Significantly Damaged (25% or more)
Change in Condition: (4) No (5) Yes (If Yes, explain under comments)
Abated: (6) Repaired (7) Removed (8) Encapsulated (9) Enclosed (10) Isolated & Restricted
Miscellaneous: (11) Inaccessible, no inspection data (12) Other (Explain under comments) (13) Non-Asbestos/Not Inspected

CONSULT ORIGINAL AND SUPPLEMENTARY INSPECTION REPORTS FOR MATERIALS WITH TRACE AMOUNTS OF ASBESTOS

**THREE-YEAR REINSPECTION
HOMOGENEOUS ACBM RECORDS**

Date of Inspection: April 20, 2004

Inspector: John Angi

District: Chico Unified School District

Building: Portables 24, 25, & 26

School: Sierra View Elementary School

Material Class	Material	Homo. Mat. #	% Asb.	F ² /L.F.	Location	Condition: Code & Comments	Friable Yes/No
M	12" VFT	86	ASSUMED	300 S	PORTABLE CLASSROOMS 24-26 (NEXT TO SINKS)	(1) (4) SOME CRACKS IN CLASSROOM 25 & 26.	N
M	DRYWALL	87	ASSUMED	1,400 S	BOY'S & GIRL'S RESTROOMS, & PORTABLE CLASSROOMS 24-26	(1) (4) DRYWALL COULD BE BEHIND THE TAGBOARD IN PORTABLES 24-26.	N
M	LINOLEUM	88	ASSUMED	1,400 S	BOY'S & GIRL'S RESTROOMS	(1) (4) THESE RESTROOMS ARE ADJACENT TO PORTABLE 26.	N
M	2' X 4' FCP	89	ASSUMED	1,800 S	PORTABLE CLASSROOMS 24-26	(1) (4) THESE UNITS WERE MANUFACTURED IN 8-89. DISTRICT CERTIFICATION REQUIRED.	N

CONDITION CODE

- General Condition: (1) Good (2) Damaged (3) Significantly Damaged (25% or more)
 Change in Condition: (4) No (5) Yes (If Yes, explain under comments)
 Abated: (6) Repaired (7) Removed (8) Encapsulated (9) Enclosed (10) Isolated & Restricted
 Miscellaneous: (11) Inaccessible, no inspection data (12) Other (Explain under comments) (13) Non-Asbestos/Not Inspected

CONSULT ORIGINAL AND SUPPLEMENTARY INSPECTION REPORTS FOR MATERIALS WITH TRACE AMOUNTS OF ASBESTOS

**THREE-YEAR REINSPECTION
HOMOGENEOUS ACBM RECORDS**

Date of Inspection: April 20, 2004

District: Chico Unified School District

Inspector: John Angi

School: Sierra View Elementary School

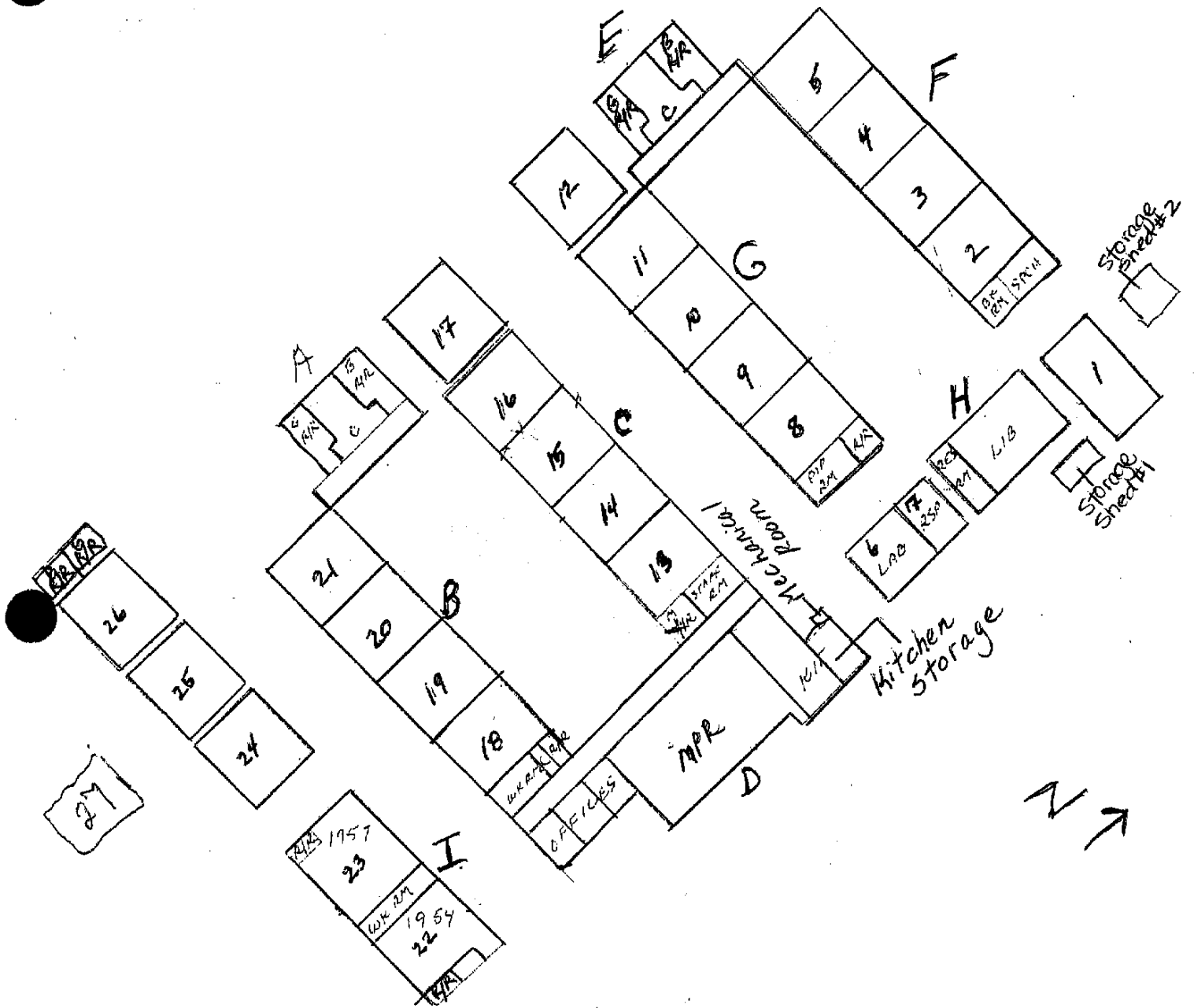
Building: Portable 27

Material Class	Material	Homo. Mat. #	% Asb.	F ² /L.F.	Location	Condition: Code & Comments	Friable Yes/No
M	DRYWALL	84	ASSUMED	900 S	PORTABLE CLASSROOM 27	(1) (4) COULD BE BEHIND THE TAG BOARD. MANUFACTURES DATE 6-98. DISTRICT CERTIFICATION REQUIRED.	N
M	2' X 4' FCP	85	ASSUMED	900 S	PORTABLE CLASSROOM 27	(1) (4) MANUFACTURES DATE 6-98. DISTRICT CERTIFICATION REQUIRED.	N

CONDITION CODE

General Condition: (1) Good (2) Damaged (3) Significantly Damaged (25% or more)
 Change in Condition: (4) No (5) Yes (If Yes, explain under comments)
 Abated: (6) Repaired (7) Removed (8) Encapsulated (9) Enclosed (10) Isolated & Restricted
 Miscellaneous: (11) Inaccessible, no inspection data (12) Other (Explain under comments) (13) Non-Asbestos/Not Inspected

CONSULT ORIGINAL AND SUPPLEMENTARY INSPECTION REPORTS FOR MATERIALS WITH TRACE AMOUNTS OF ASBESTOS



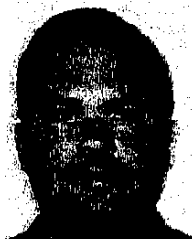
OS2004
SURVEILLANCE

SIERRA VIEW ELEMENTARY

State of California
Division of Occupational Safety and Health

Certified Asbestos Consultant

John A. Angi



Name

Certification No. **03-3330**

Expires on

4/23/2005

This certification was issued by the Division of Occupational Safety and Health as authorized by Sections 7180 et seq. of the Business and Professions Code.

Hazard Management Services, Inc.

This is to confirm that

John A. Angi

has attended the eight-hour

**AHERA Refresher Course for Asbestos Inspectors and
Management Planners**

and has completed the requisite training for asbestos accreditation under TSCA Title II

September 10, 2003

Certificate number: 14

Valid until: September 10, 2004

Cal/OSHA approval number: CA-025-06/CA-025-08



Tom Wangerin, MS, CAC
AHERA Training Director
Hazard Management Services, Inc.
367 Civic Drive, Suite 7
Pleasant Hill, CA 94523-1936
925-363-3442