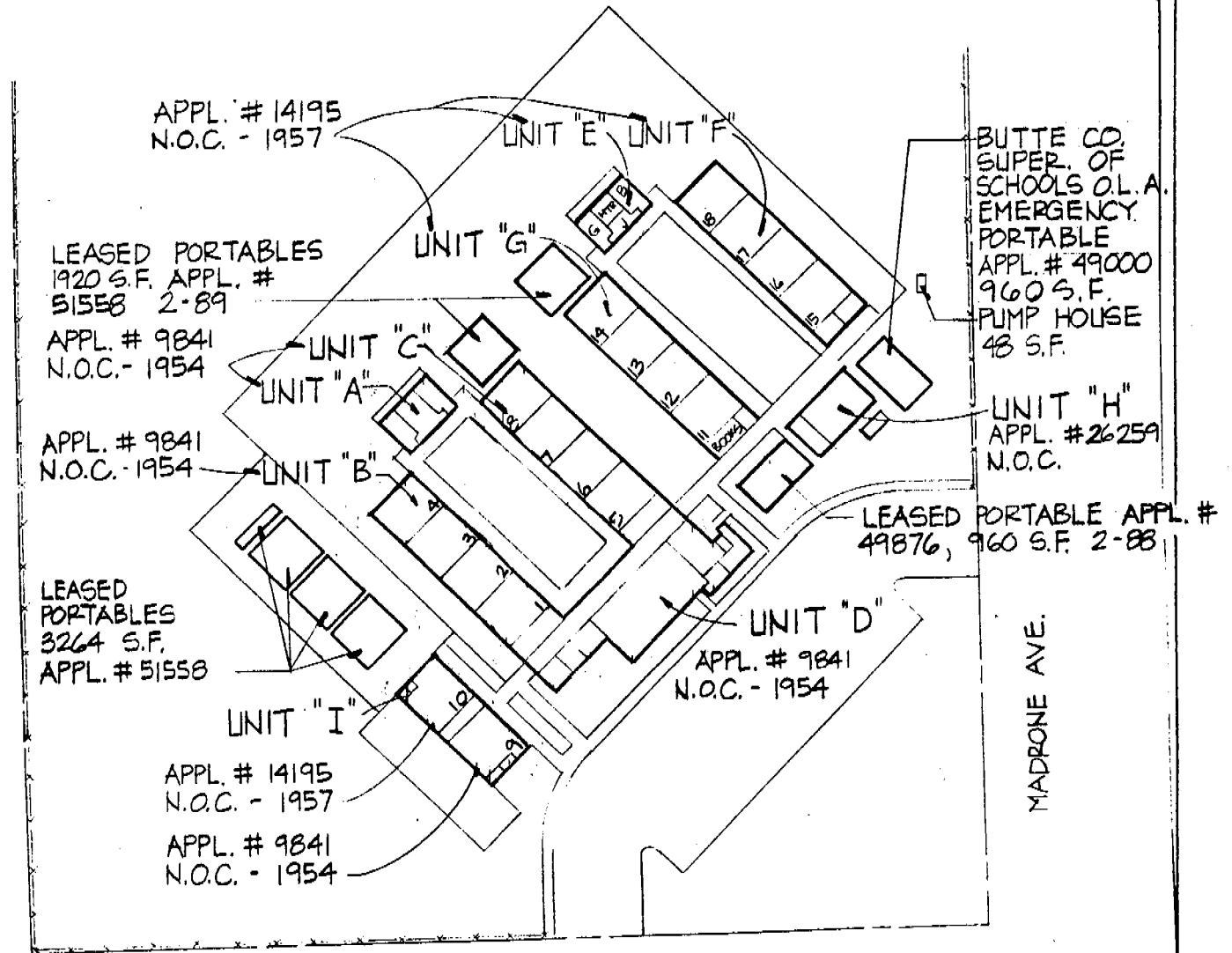


SIERRA VIEW ELEMENTARY SCHOOL
 CHICO UNIFIED SCHOOL DISTRICT
 CHICO, BUTTE CO., CALIFORNIA

DIAGRAM OF BUILDING AREA

- EXISTING (1-A)
- BASIC PLANS (2-A)
- FINAL PLANS (3-A)



HOOKER OAK AVE.

NORTH



SIERRA VIEW SCHOOL

SCALE: 1"=100'-0"

NOTES:

N.O.C. = NOTICE OF COMPLETION

ABOVE IS MEASURED IN ACCORDANCE WITH ART. 2022
 SUBCHAPTER 8, TITLE 5, CALIF. ADMIN. CODE

ARCHITECT

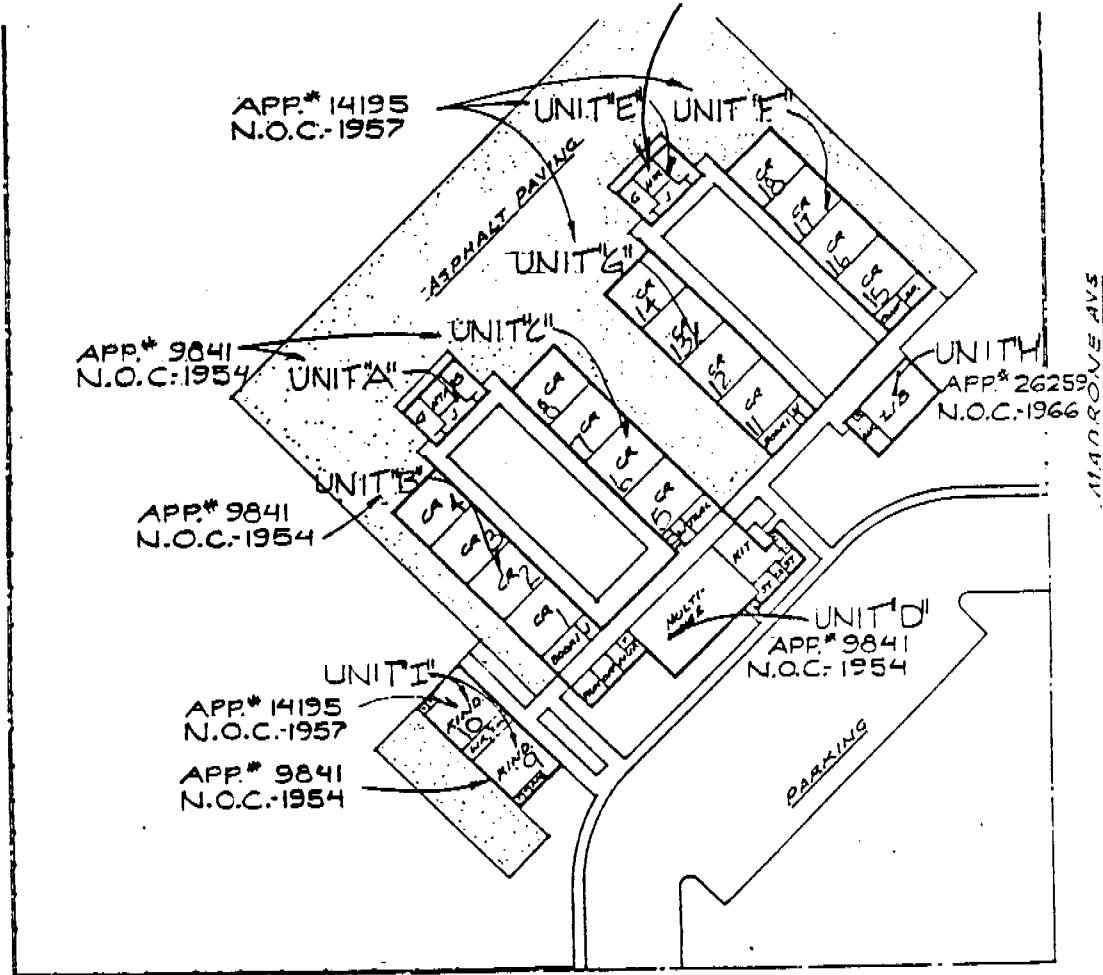
DATE: 12-28-89 SHEET 1 OF 6
 OFFICE OF THE STATE ARCHITECT

Paul J. [Signature]

SIERRA VIEW ELEMENTARY SCHOOL
 CHICO UNIFIED SCHOOL DISTRICT
 CHICO, BUTTE CO., CALIFORNIA

DIAGRAM OF BUILDING AREA

- EXISTING (1-A)
- BASIC PLANS (2-A)
- FINAL PLANS (3-A)



HOOKER OAK AVE.

NORTH



SIERRA VIEW SCHOOL
 SCALE 1/8" = 1'-0"

THIS DRAWING IS MEASURED IN ACCORDANCE WITH ART. 2022
 CHAPTER 8, TITLE 5, CALIF. ADMIN. CODE
 ARCHITECT

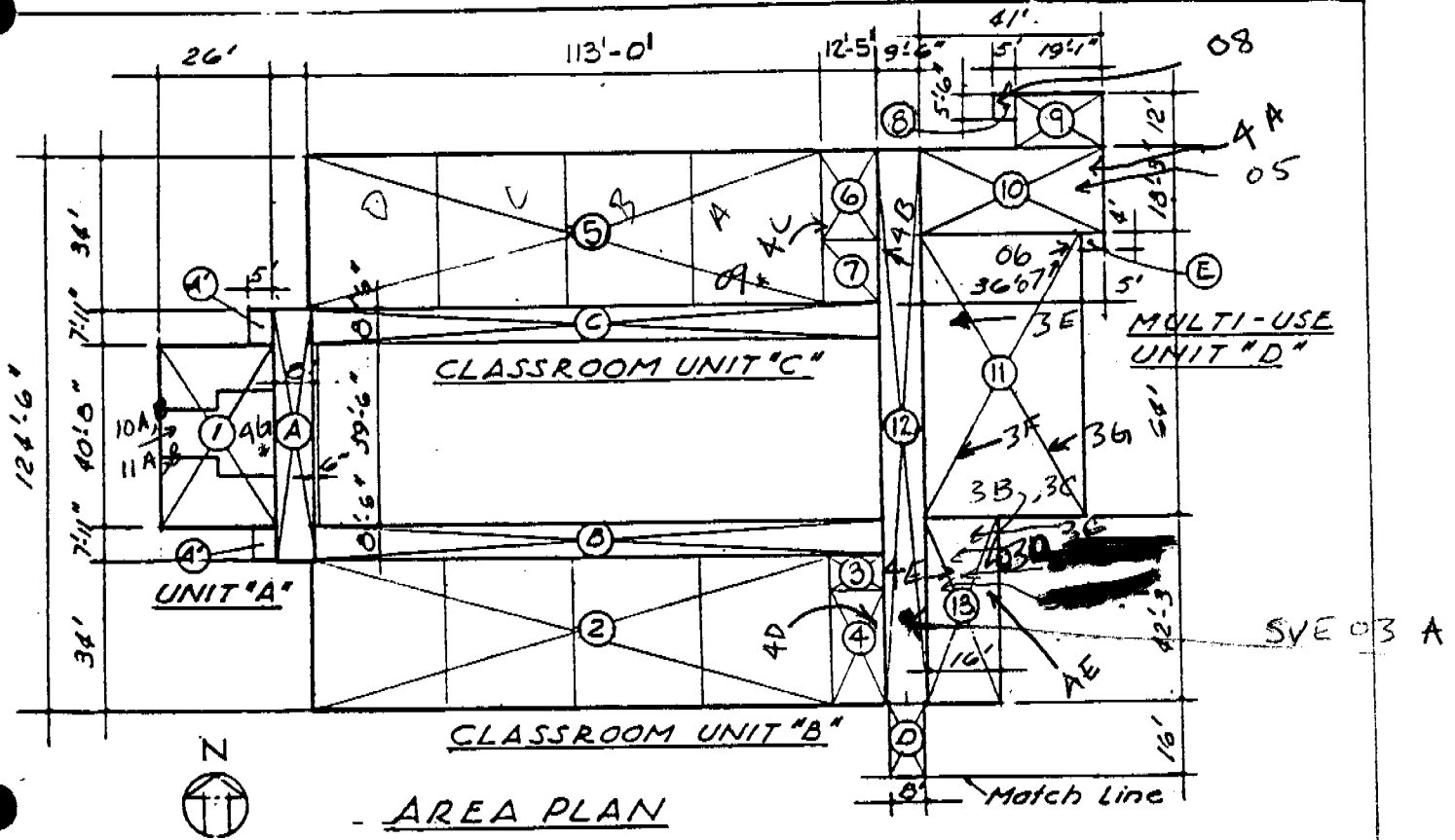
DATE: 3-25-87 SHEET 1 OF 6
 OFFICE OF THE STATE ARCHITECT

Paul J. [Signature]

SIERRA VIEW ELEMENTARY SCHOOL
 CHICO UNIFIED SCHOOL DISTRICT
 CHICO, BUTTE CO., CALIFORNIA

DIAGRAM OF BUILDING AREA

☒ EXISTING (1-A)
 □ BASIC PLANS (2-A)
 □ FINAL PLANS (3-A)



UNITS A, B, C, AND D

NO.	DESCRIPTION	WIDTH	LENGTH	FACTOR	AREA (S.F.)
1	TOILET AND HEATER	26	40.66	1	1057.16
2	CLASSRMS. (4)	113	34	1	3842
3	JANITOR	8	12.42	1	99.36
4	BOOK STORAGE	26	12.42	1	322.92
5	CLASSRMS. (4)	113	34	1	3842
6	TEACHER	20	12.42	1	248.4
7	STAFF TOILET	14	12.42	1	173.88
8	MECH.	5	5.5	1	27.5
9	FOOD SERVICES	12.08	12	1	144.96
10	KITCHEN	41	18.25	1	748.25
11	MULTI USE	36	64	1	2304
12	ENCLOSED CORRIDOR	9.5	124.5	1	1182.75
13	ADMINISTRATION	16	42.25	1	676

SUB TOTAL***** 13769.18

A	COVERED CORRIDOR	8.5	56.5	.33	158.48
B	COVERED CORRIDOR	10	8	.33	26.4
C	COVERED CORRIDOR	124.5	8.5	.33	349.22
D	COVERED CORRIDOR	124.5	8.5	.33	349.22
E	COVERED CORRIDOR	5	4	.33	6.6

SUB TOTAL***** 889.92 #1

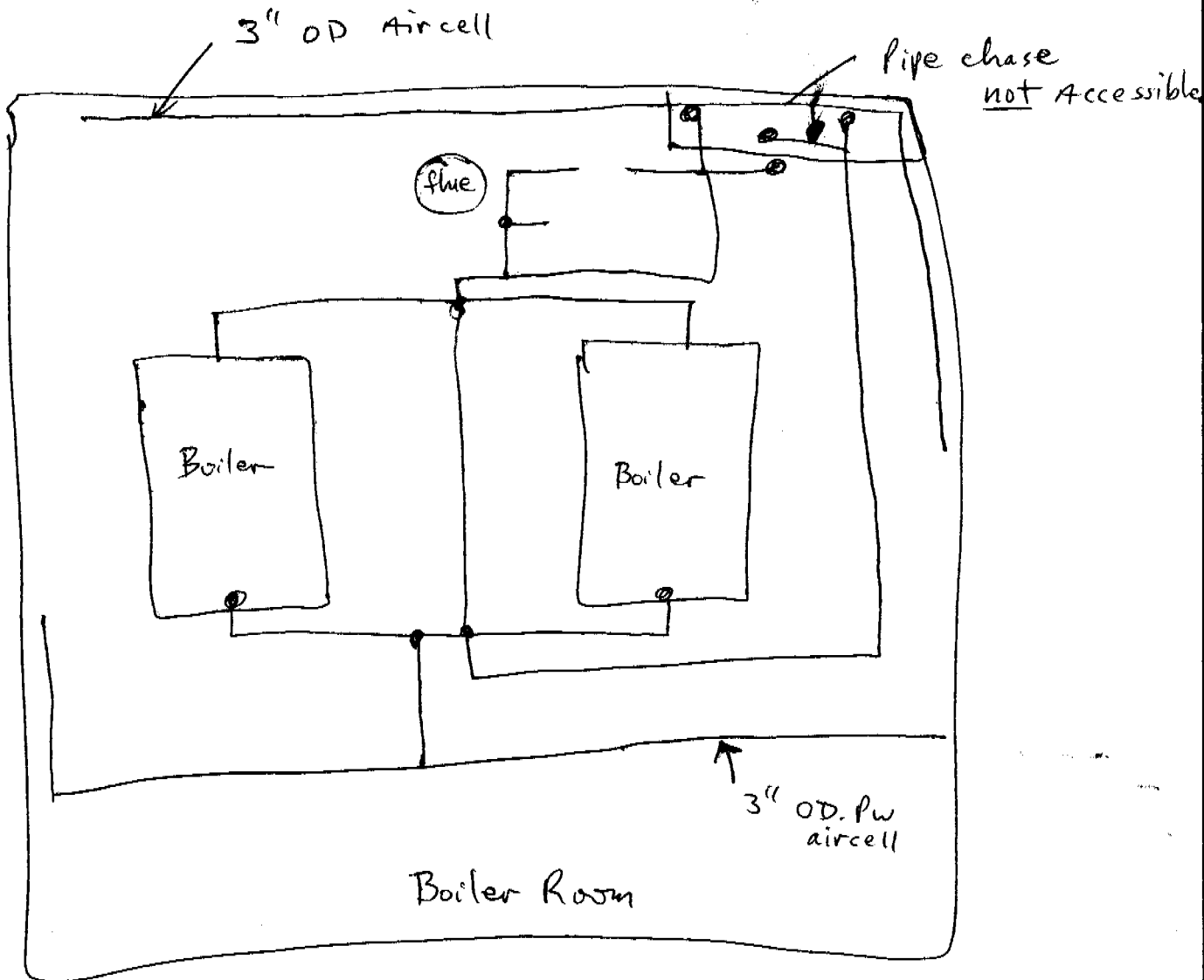
MEASURE IS MEASURED IN ACCORDANCE WITH ART. 2022
 SUBCHAPTER 8, TITLE 5, CALIF. ADMIN. CODE
 ARCHITECT

DATE: 3-25-87 SHEET 2 OF 6
 OFFICE OF THE STATE ARCHITECT

Paul [Signature]

Boiler Room Unit A

3-29-88

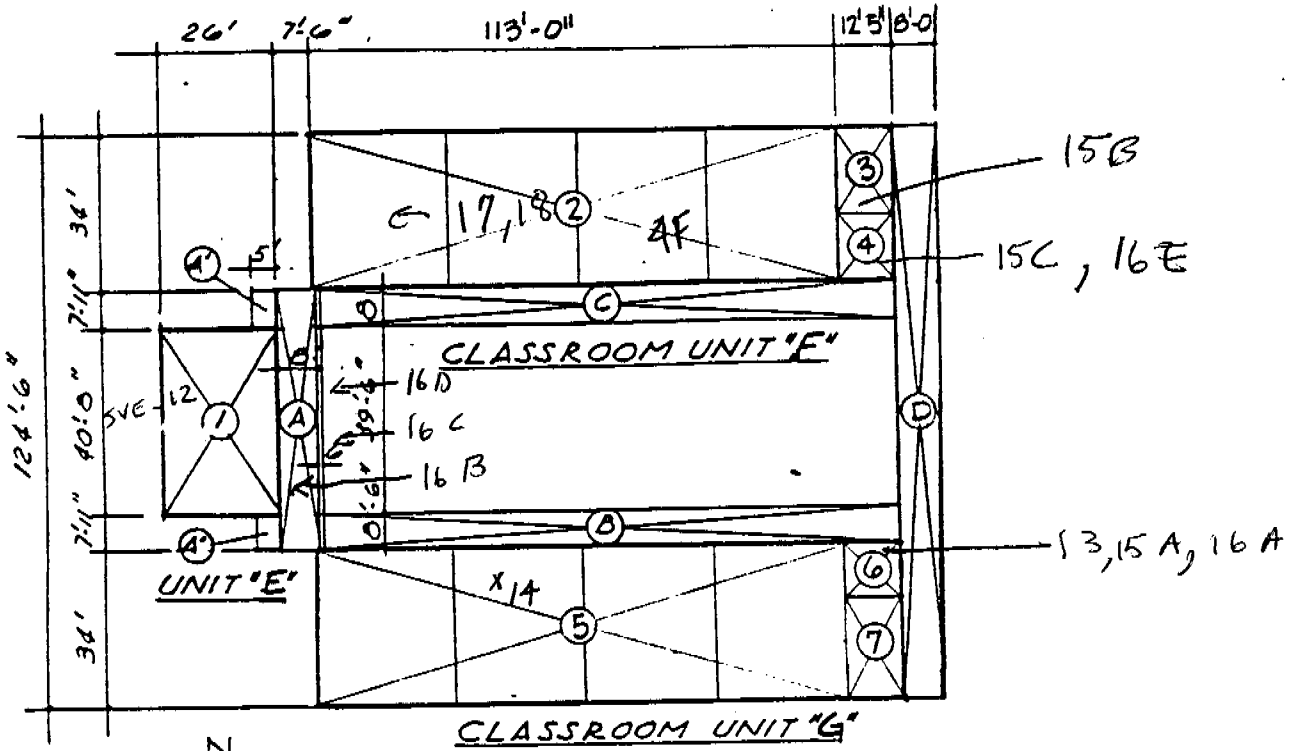


Approx 80' 6-8" OD pipewrap
55' 3-4" OD pipewrap

SIERRA VIEW ELEMENTARY SCHOOL
 CHICO UNIFIED SCHOOL DISTRICT
 CHICO, BUTTE CO., CALIFORNIA

DIAGRAM OF BUILDING AREA

- EXISTING (1-A)
- BASIC PLANS (2-A)
- FINAL PLANS (3-A)



AREA PLAN
 Scale 1" = 40'

UNITS E, F, G

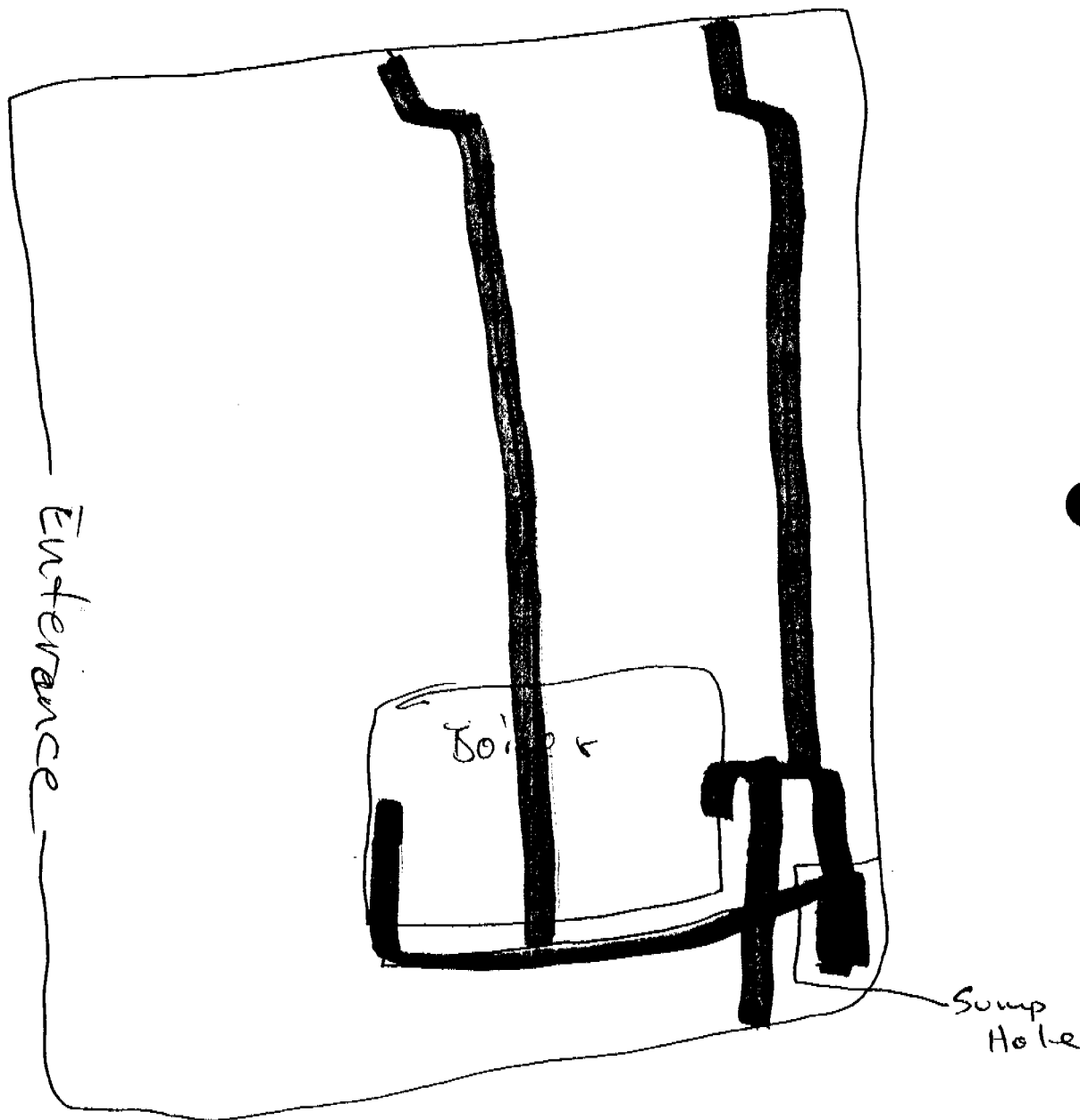
NO.	DESCRIPTION	WIDTH	LENGTH	FACTOR	AREA (S.F.)
1	HEATER AND TOILET	26	40.66	1	1057.16
2	CLASSRMS. (4)	113	34	1	3842
3	SPECIAL INSTRUCTIONS	12.42	20	1	248.4
4	CONFERENCE	12.42	14	1	173.88
5	CLASSRMS. (4)	113	34	1	3842
6	STAFF TOILET	12.42	12	1	149.04
7	BOOK STORAGE	12.42	22	1	273.24
SUB TOTAL*****					9585.72
A	COVERED CORRIDOR	8.5	56.5	.33	158.48
B	COVERED CORRIDOR	10	8	.33	26.4
C	COVERED CORRIDOR	124.5	8.5	.33	349.22
D	COVERED CORRIDOR	124.5	8.5	.33	349.22
E	COVERED CORRIDOR	124.5	8.5	.33	349.22
SUB TOTAL*****					1,232.54

ABOVE IS MEASURED IN ACCORDANCE WITH ART. 2022
 SUBCHAPTER 8, TITLE 5, CALIF. ADMIN. CODE
 ARCHITECT

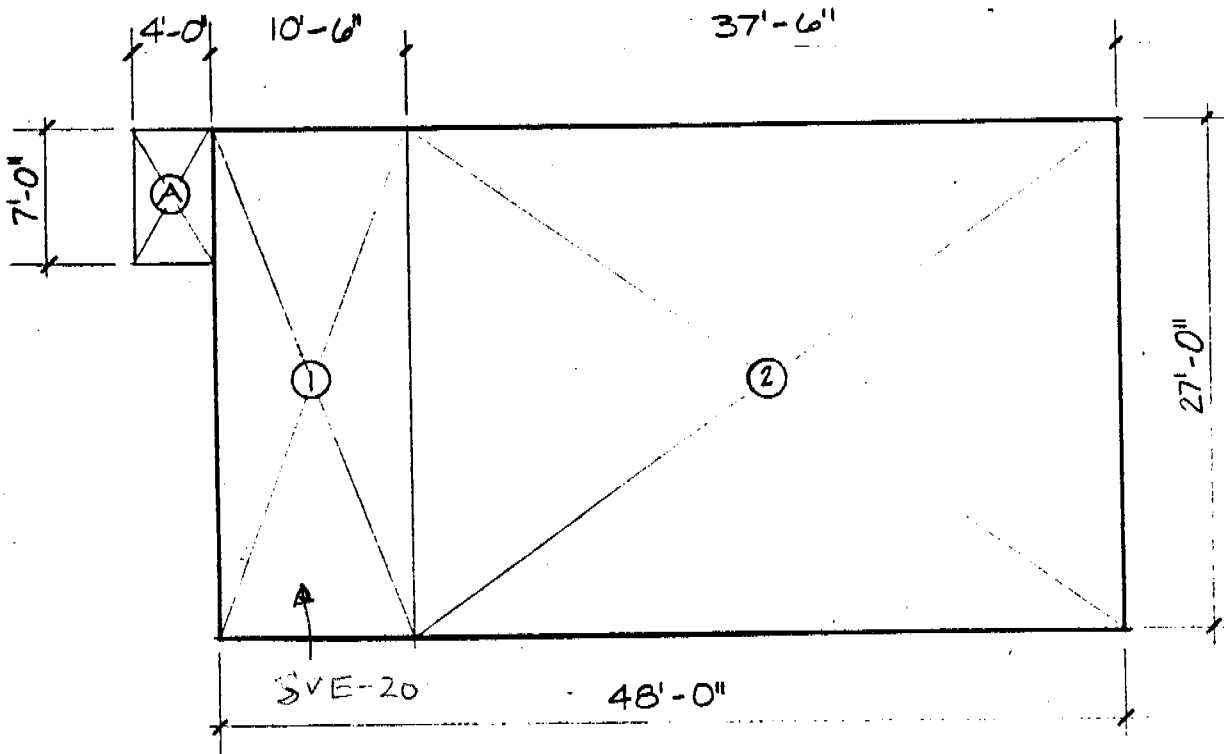
DATE: 3-25-87 SHEET 3 OF 6
 OFFICE OF THE STATE ARCHITECT

Paul H. ...

Unit E



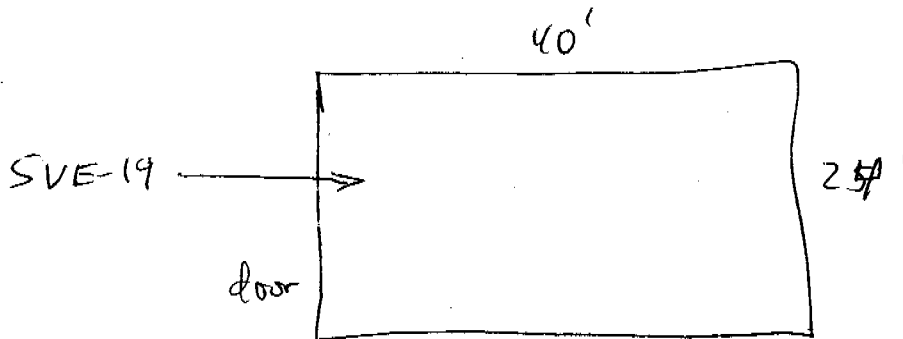
Pipe Straights are F/6 (mostly)
Joints are mudded
Access is good in all Areas



UNIT "H"

1" = 10'-0"

①	WORK ROOM	10.5' x 27.00'	=	283.5'
②	LIBRARY	37.5' x 27.00'		<u>985.5'</u>
				⊕ 1269.0'
Ⓐ	COVERED CORRIDORS	4.0' x 7.0' x .33		<u>9.24</u>
			TOTAL ⊕	1278.24#'



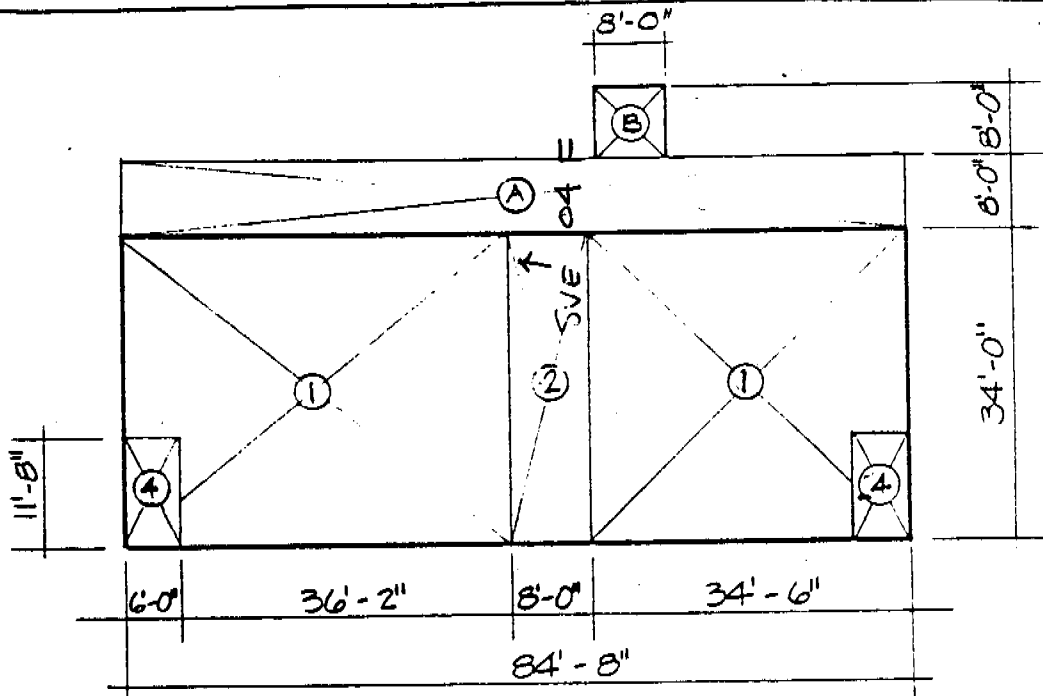
Portable

[Handwritten signature]

SIERRA VIEW ELEMENTARY SCHOOL
 SICO UNIFIED SCHOOL DISTRICT
 SICO, BUTTE CO., CALIFORNIA

DIAGRAM OF BUILDING AREA

EXISTING (1-A)
 BASIC PLANS (2-A)
 FINAL PLANS (3-A)



UNIT "I"
 1" = 20'-0"

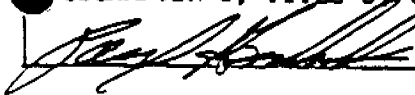
①	KINDERGARTEN	42.17' x 34.00' - 6.0' x 11.66	1363.82
②	TEACHER & WORK	8.0' x 34.0'	272.00
③	KINDERGRTEN	34.5' x 34' - 6.0' x 11.66'	1103.00
④	TOILETS (2)	(2) 6.0' x 11.66	140.00
			<hr/>
			2878.82
Ⓐ	COVERED CORRIDOR	84.67' x 8.0' x .33	223.53
Ⓑ	COVERED CORRIDOR	8.0' x 8.0' x .33	21.12
			<hr/>
			244.65'
			<hr/>
		TOTAL	\$ 3123.47

ABOVE IS MEASURED IN ACCORDANCE WITH ART. 2022
 SUBCHAPTER 8, TITLE 5, CALIF. ADMIN. CODE
 ARCHITECT

DATE: 3-25-85 SHEET 5 OF 6
 OFFICE OF THE STATE ARCHITECT

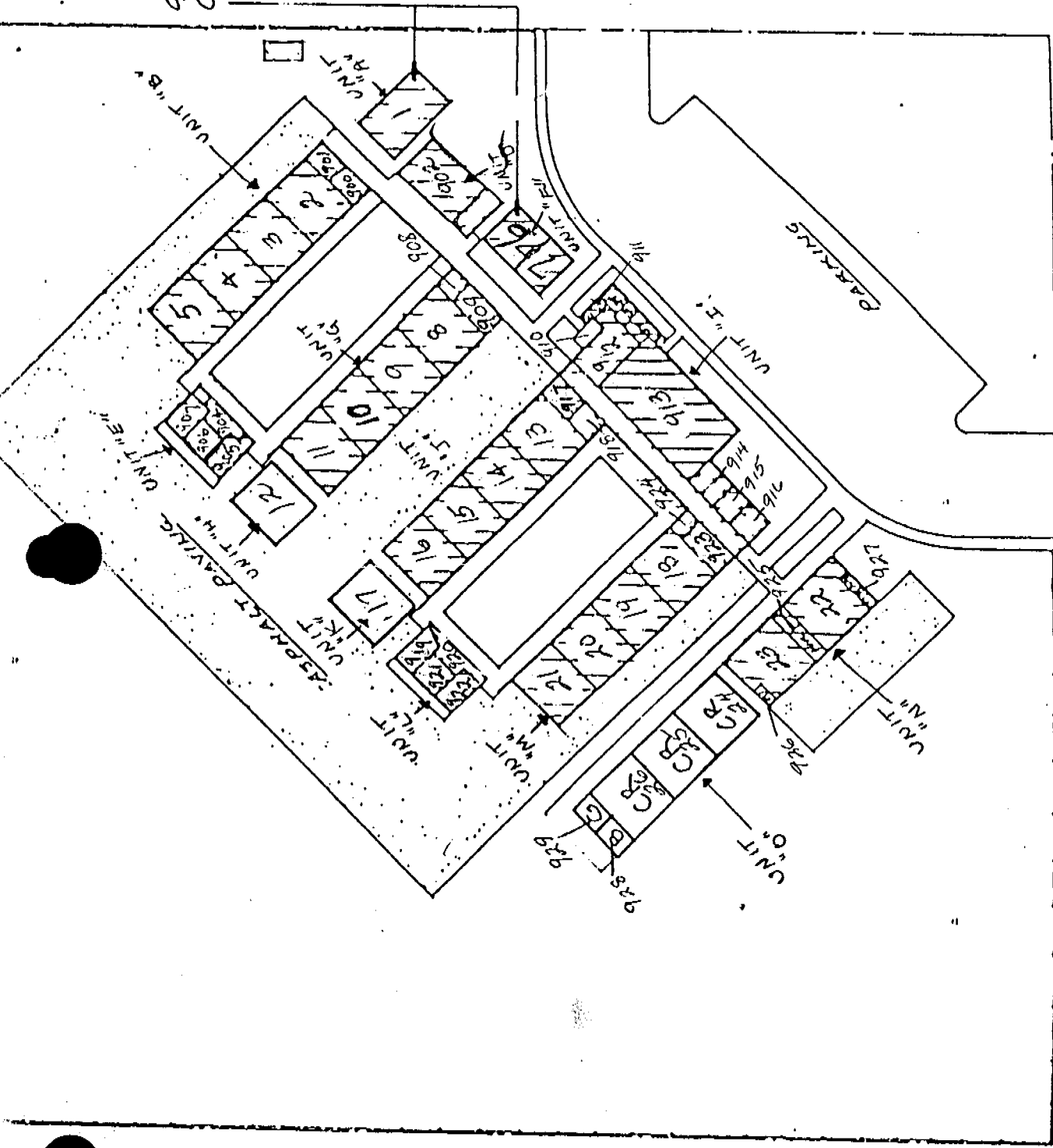
SUMMARY OF AREAS

<u>UNIT</u>	<u>TOTAL AREA</u>
UNITS A, B, C & D COVERED CORRIDORS @ 1/3	13769.18 889.92
UNITS E, F & G COVERED CORRIDORS @ 1/3	9585.72 1,232.54
UNIT H COVERED CORRIDORS @ 1/3	1269.0 9.24
UNIT I COVERED CORRIDORS @ 1/3	2878.82 244.65
TOTAL . .	29,879.07 \$1
	900
	<u>30,839</u>



SPEC. ED.
CLASSROOM

MADROVE AVE



LEGEND



EXISTING BUILDINGS

HOOKER OAK AVE.

North



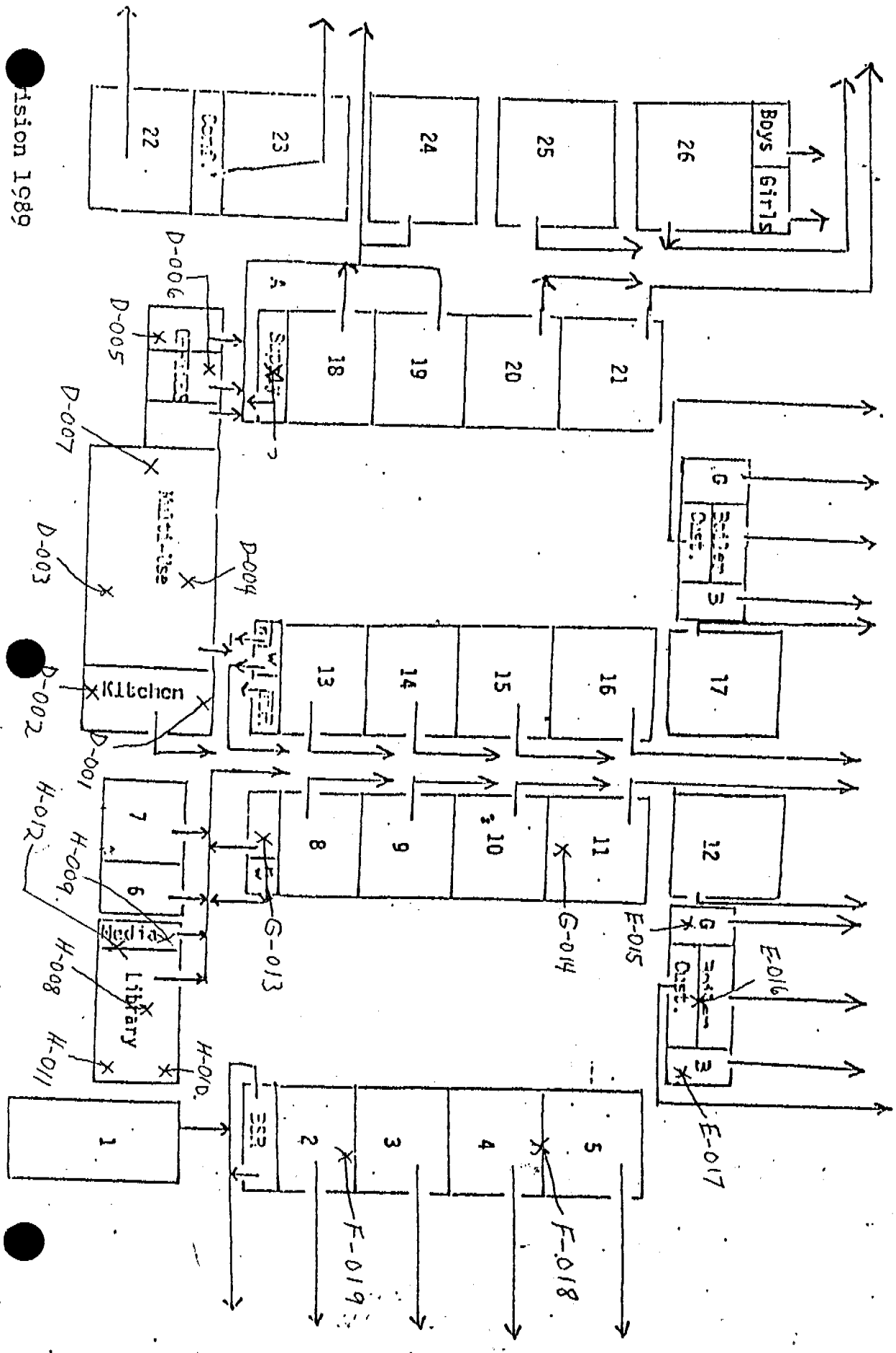
SIERRA VIEW SCHOOL

Scale 1" = 20'

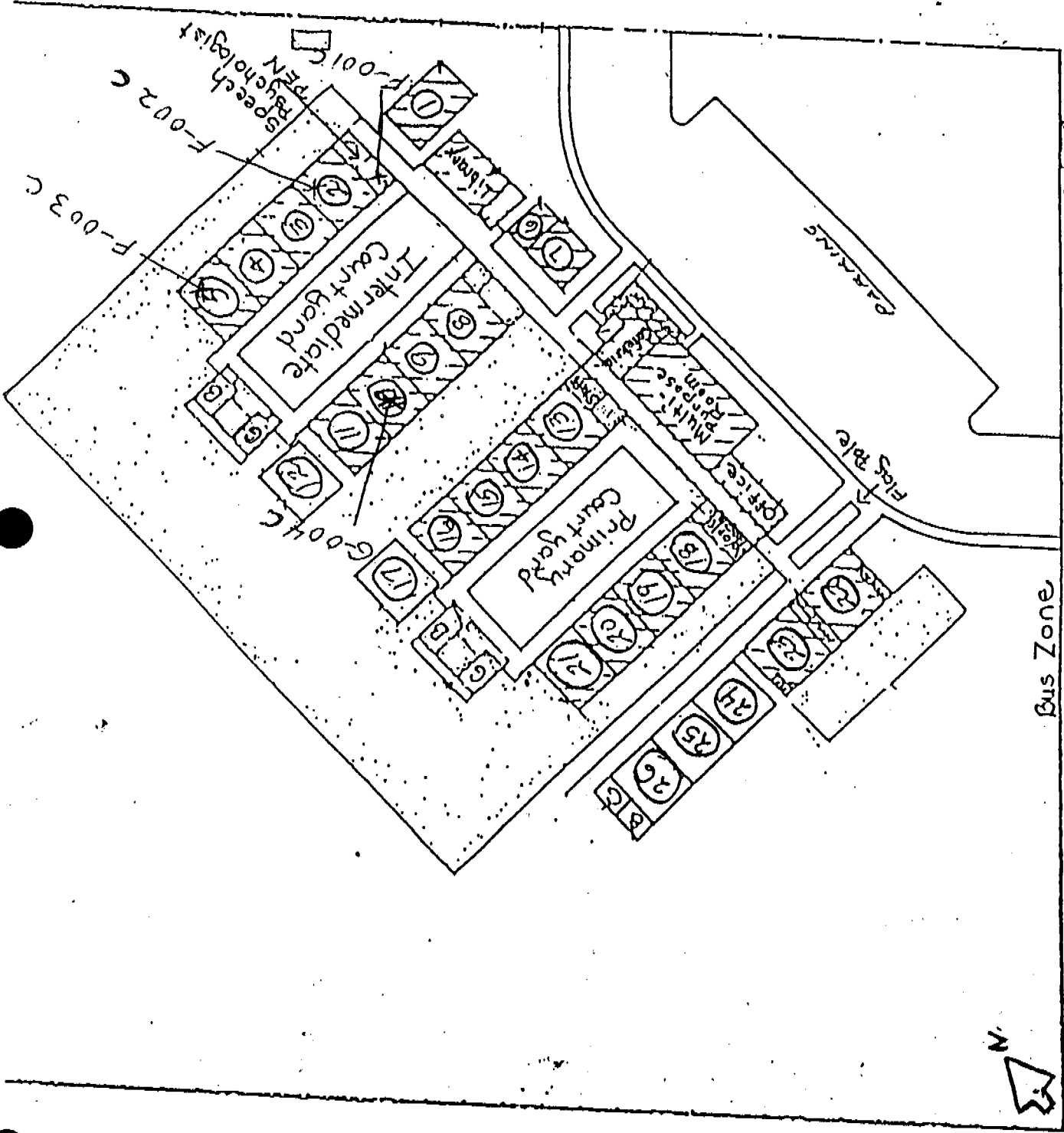
**SIEGA VIEW SCHOOL
EMERGENCY EVACUATION ROUTE FLOW CHART**

REGULAR ROUTE
FOR FIRE DEPT.

1. Before leaving classroom.
2. Make certain all persons have left room—you leave last.
3. Give list of pupils (pianbook) with you in order to call roll. Stand by until all clear signal (bells).
- 4.



MAORONE AVE

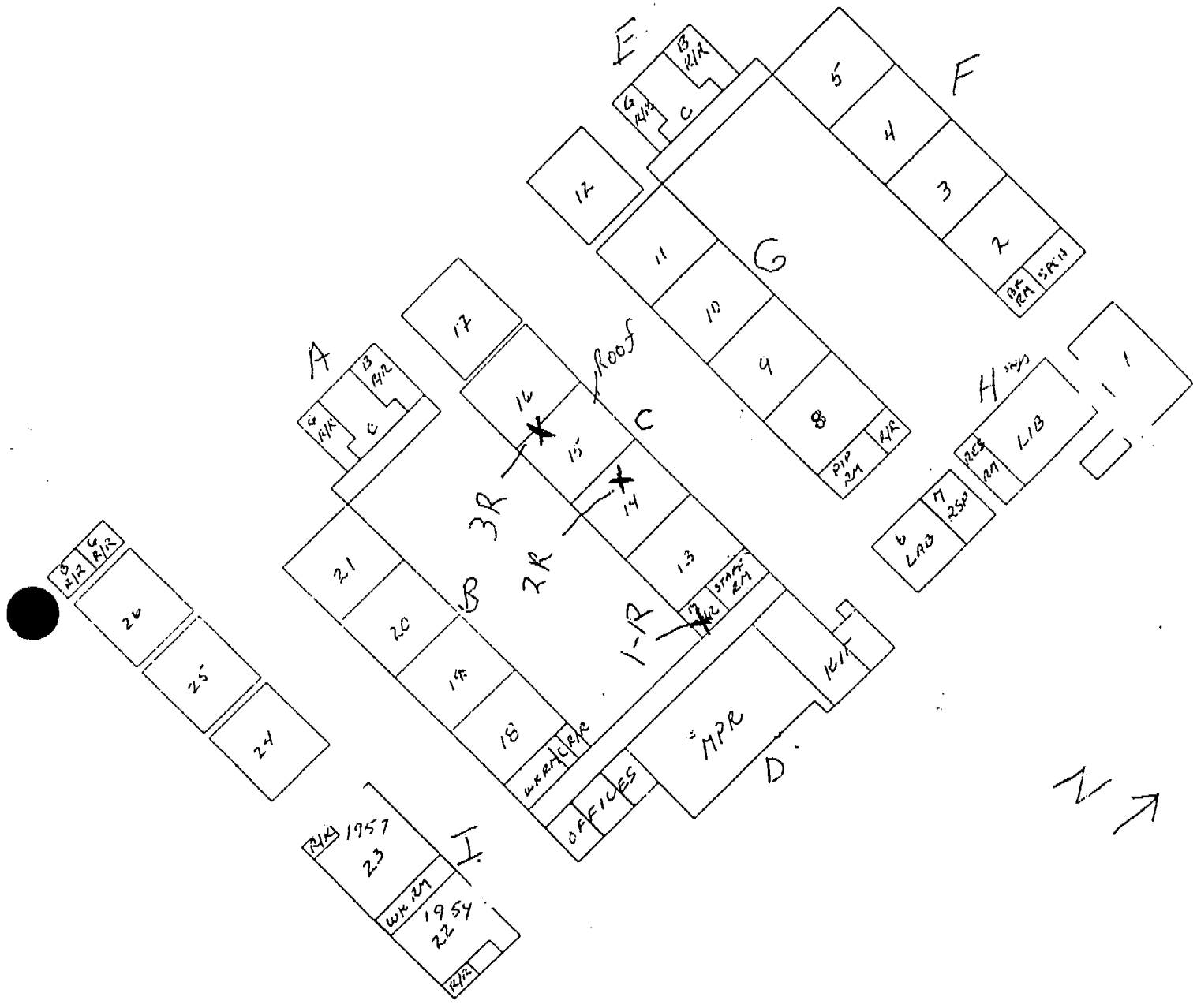


Hooker Oak Ave.

Bus Zone

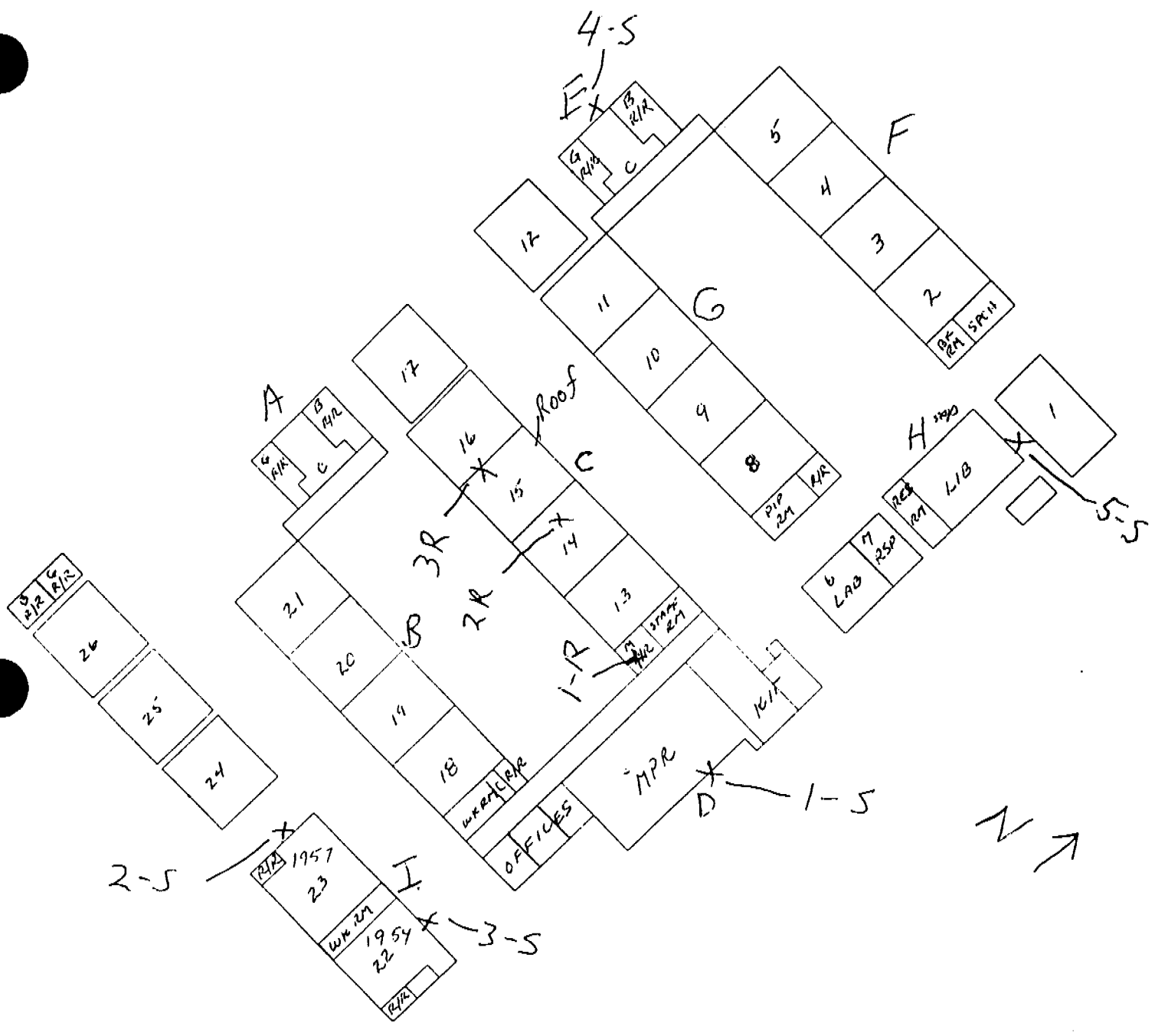
Ceilings

WELCOME TO SIERRA VIEW SCHOOL



SIERRA VIEW ELEMENTARY

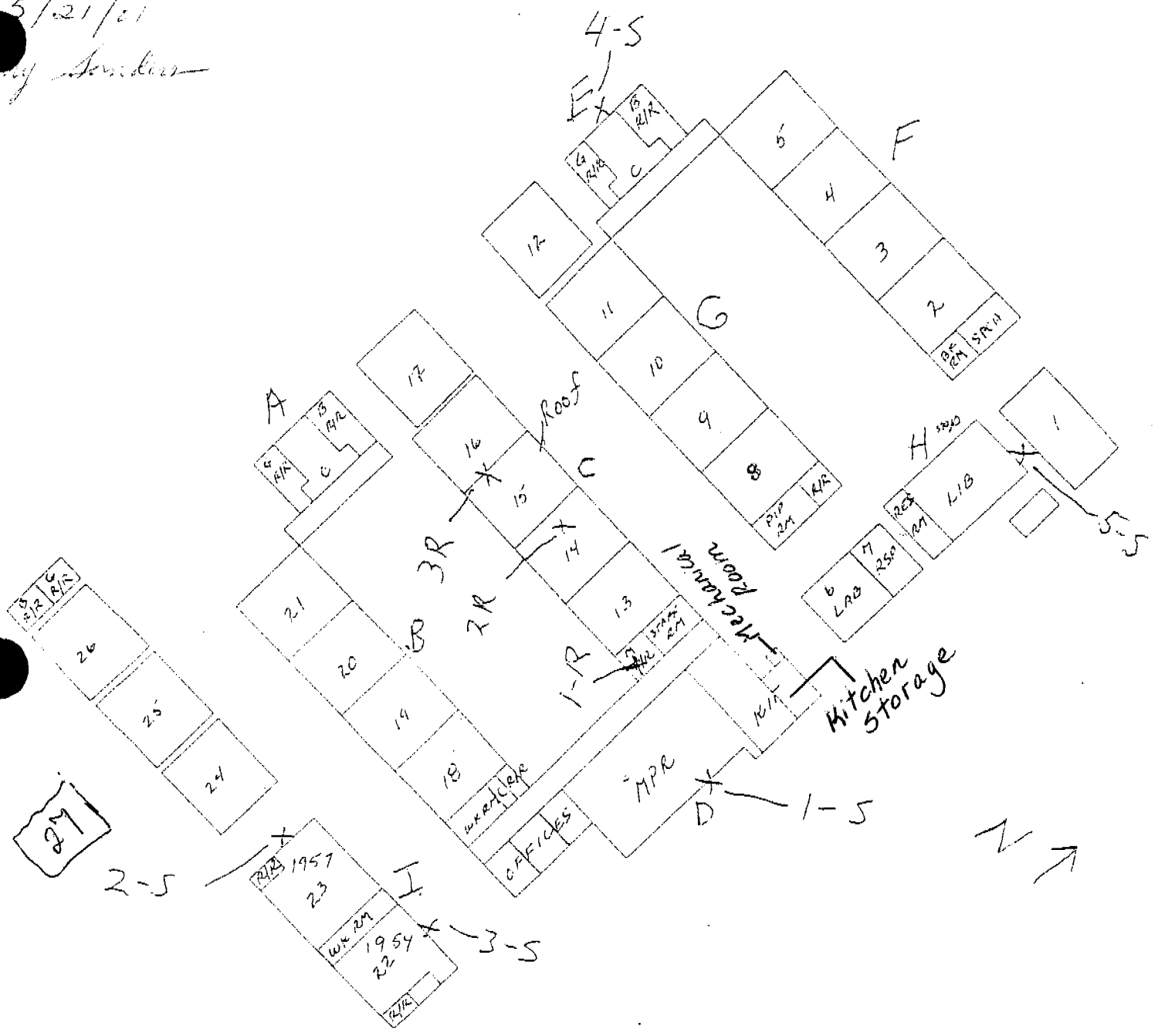
4179



SIERRA VIEW ELEMENTARY

4179

5/21/01
Cory Sanders



SIERRA VIEW ELEMENTARY