

CHICO UNIFIED SCHOOL DISTRICT

# DRAFT TRUSTEE AREA MAPS PUBLIC HEARING

FEBRUARY 16, 2022

Presented by:

Jamie King-Iseman, President, King Consulting

Rob Murray, Director, King Consulting



# Agenda

- Review of Trustee Area Creation Timeline
- Review of Original Criteria
- Newer Feedback
- Review of Draft Trustee Area Maps
- Review of Criteria Data for Maps
- Next Steps

# Review of Timeline and Criteria



# Proposed Timeline

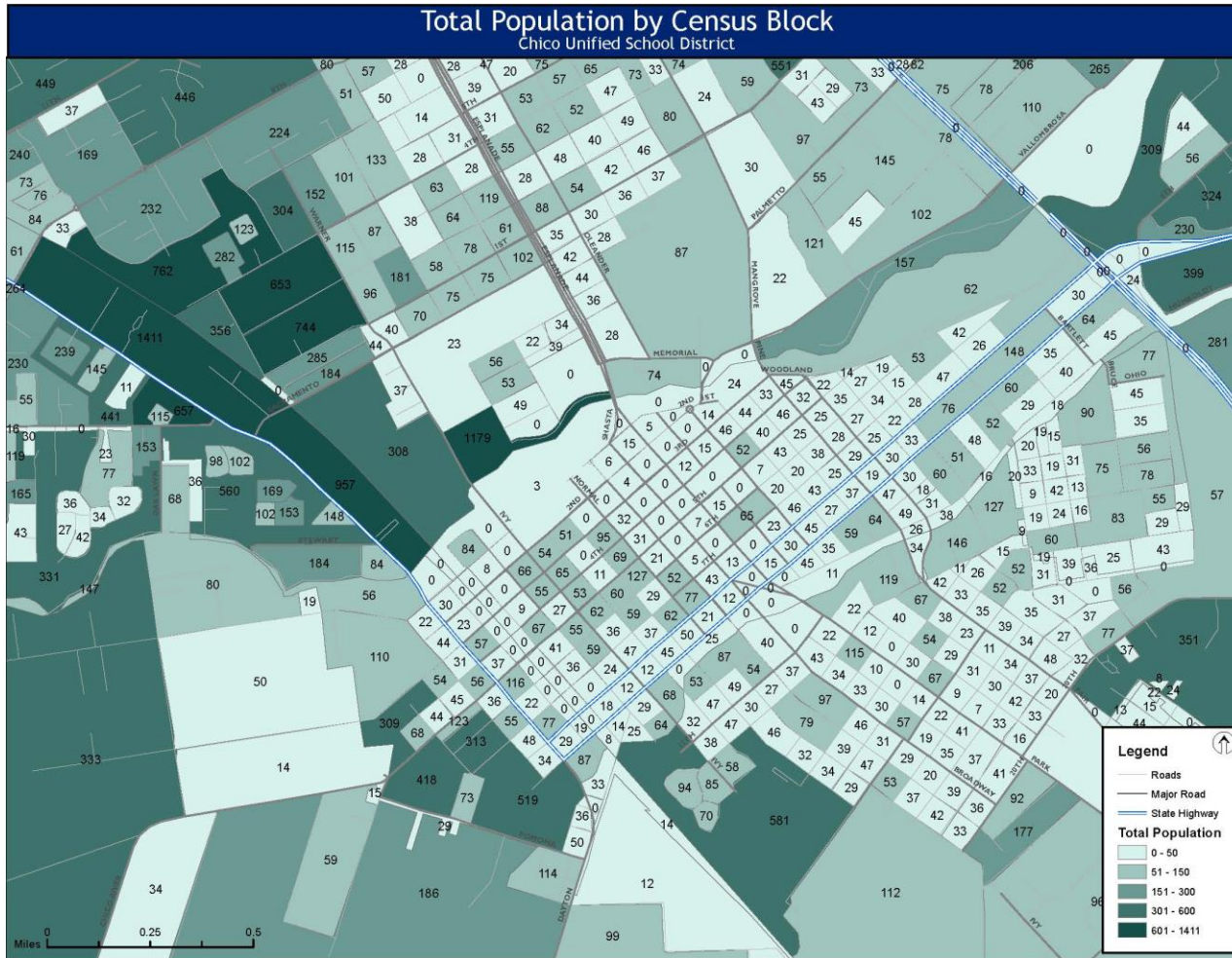
Date	Action
September 1, 2021	Public Outreach Meeting #1
September 15, 2021	Public Outreach Meeting #2
October 20, 2021	Presentation of Draft Trustee Area Maps
November 3, 2021	First Hearing on Draft Maps
November 17, 2021	Second Hearing on Draft Maps after incorporating feedback from First Hearing.
By November 24, 2021	Final map options based on all Board and public feedback to be posted on District website
January 19, 2022	Additional map options and data to be presented based on feedback received since previous meeting.
February 2, 2022	Public hearing on all presented map options. Board <i>can</i> select map if no new options presented.
February 16, 2022	Board to adopt map.
March	Approval of trustee area map by County Committee on School District Reorganization (County of Board of Education)
TBD	State Board of Education approval of CUSD waiver of election, which automatically establishes trustee area elections
TBD	The first election to use the trustee areas must be held more than 120 days after trustee areas are established by the State Board of Education

# Criteria Discussed in Public Meetings

## Legal Requirements

1. CUSD's Hispanic/Latino population is not particularly concentrated based on 2020 Census data, with one area identified to keep within a single trustee area.
2. The total CUSD population was recorded in the 2020 Decennial United States Census at **120,119** people. Each Trustee Area must therefore contain between 22,823 and 25,225 people.

# Census Data Background



- Data is available in a variety of geographic levels.
  - The smallest level is called a *Census Block*, which we will use to provide the most precision in creating *Trustee Areas*.
- **Census Blocks are not uniform in size or population.**
  - *Chico USD contains Census Blocks ranging in population from 0 to 1,411.*



# Criteria Discussed in Public Meetings

## Community Input

1. There was support expressed for Trustee Areas that are each entirely within one high school attendance boundary or the other. (Blue map option)
  - 2020 criterion (March 4, 2020)
2. Speakers also raised support for Trustee Areas that each cover both high school attendance boundaries (Green map option).
  - 2020 criterion (March 4, 2020)
3. Speakers also expressed interest in Trustee Areas based on elementary school boundaries (Purple map option).
  - Public comment, September 15, 2021
4. Several neighborhoods were identified as “communities of interest” to be kept together in a single Trustee Area:  
*Barber, Chapmantown, Downtown, South Campus, The Avenues*
  - 2020 criterion (Public comment, March 11, 2020)
5. Trustee Areas should be as balanced as possible from a socioeconomic standpoint.
  - 2020 criterion (March 4, 2020)
6. There is interest in seeing the proportion of owners and renters in each Trustee Area.
  - Board comment, September 1, 2021

# Additional Feedback since November

- Considerations regarding next election.
  - *Development of new map options.*
  - *Election sequences.*
- Support expressed for all three original map options.
- Questions about Purple map and elementary boundaries.
- How to find and use maps.
- Additional neighborhood: Cal Park.
- Clarification on District extent.
- Mountain communities are a community of interest.
- Question of percent of CUSD population within the City of Chico:
  - *Of the 120,119 people residing in CUSD, there are 101,475 who live within the City of Chico (84.5%).*
  - *86.0% of Chico USD students reside within the City of Chico.*





# Original Draft Trustee Area Maps



# Summary of Initial Draft Maps

## Green

### Green Map Option:

- Every Trustee Area represents both high schools.
- Range of Hispanic/Latino population is 14.0% to 23.5%
- All areas are within required population range.
- More diversity in socioeconomic data and housing tenure.
- South Campus and The Avenues are split between multiple Trustee Areas.

## Orange A

### Orange A Map Option:

- Emphasis on simplifying election sequence by separating current Board members between Trustee Areas.
- Range of Hispanic/Latino population is 14.8% to 22.7%
- All areas are within required population range.
- Most diversity in socioeconomic data and housing tenure.
- All identified neighborhoods are contained within a single Trustee Area.

## Orange B

### Orange B Map Option:

- Modifies Orange A to include more school site locations in Trustee Area 5.
- Range of Hispanic/Latino population is 14.7% to 22.7%
- All areas are within required population range.
- Most diversity in socioeconomic data and housing tenure.
- All identified neighborhoods are contained within a single Trustee Area.

Note: The previously presented Blue Map Option was removed from consideration at the January 19, 2022 Board meeting, and the Purple Map Option was removed from consideration at the February 2, 2022 Board meeting.

# Election Sequencing

Current Member	Term Ends
Dalby	2024
Kaiser	2022
Lando	2022
Robinson	2022
Tennis	2024

- All Board members can complete their current term.
- Three Trustee Areas will elect in 2022, two in 2024.

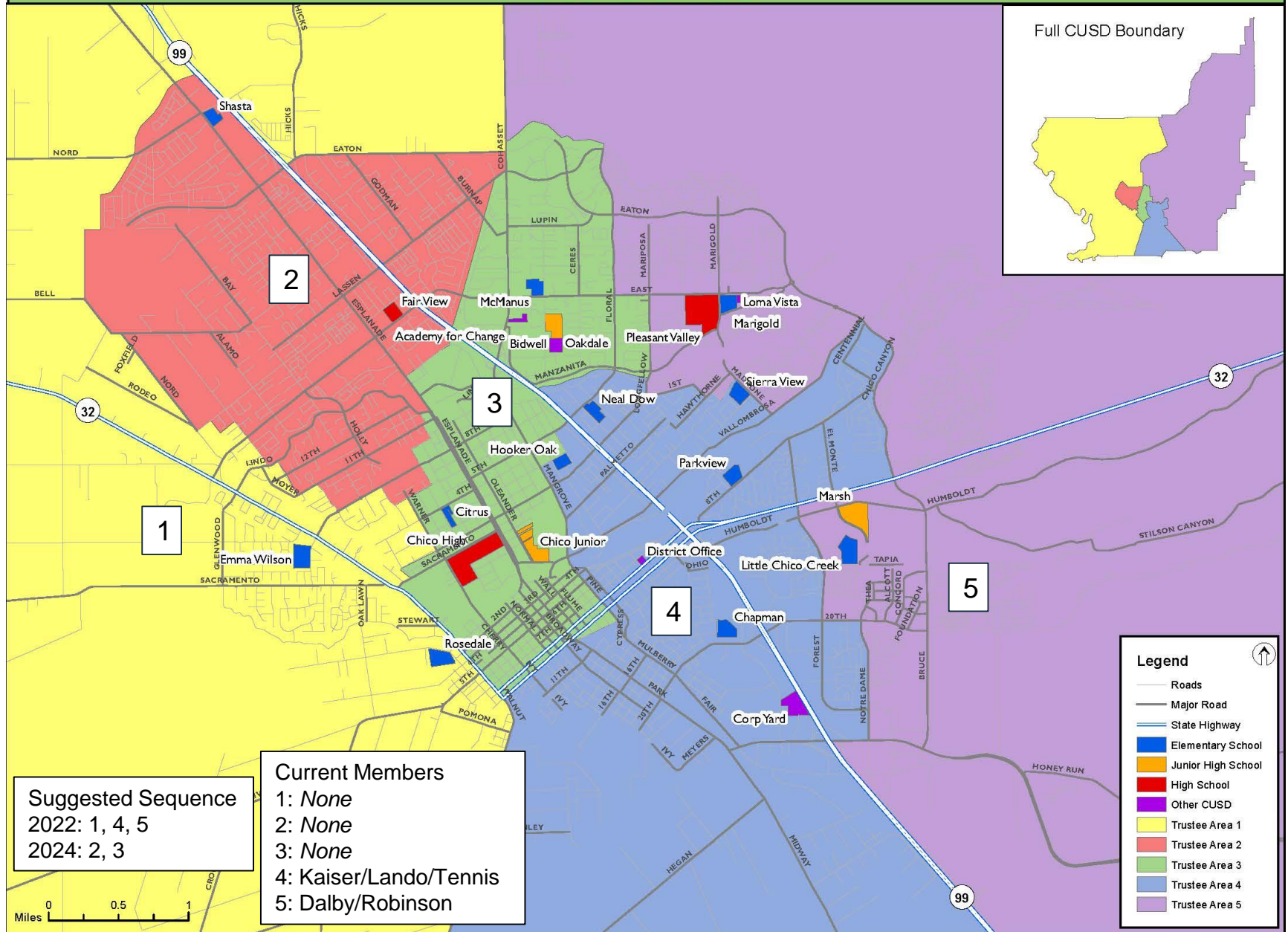
# Election Sequencing Examples

Current Member	Term Ends
"A"	2022
"B"	2022
"C"	2024

- If multiple Board members live in the same Trustee Area, the procedure depends on their election cycles.
  - **Same cycle:** "A" and "B" compete against each other (plus any new candidates), with only one candidate winning the Trustee Area seat.
  - **Different cycles, 2022 election year:** "A" and "C" can run (plus any new candidates) to win the Trustee Area seat.
    - *If "C" wins, this creates a vacancy on the Board that must be filled by appointment or by a special election for a two-year term.*
    - *If "C" does not win, they finish their at-large term in 2024 and must wait until 2026 to compete again for the Trustee Area seat.*
  - **Different cycles, 2024 election year:** "A" must wait until 2024 to compete for the Trustee Area seat.

# Draft Trustee Area Map Option: Green

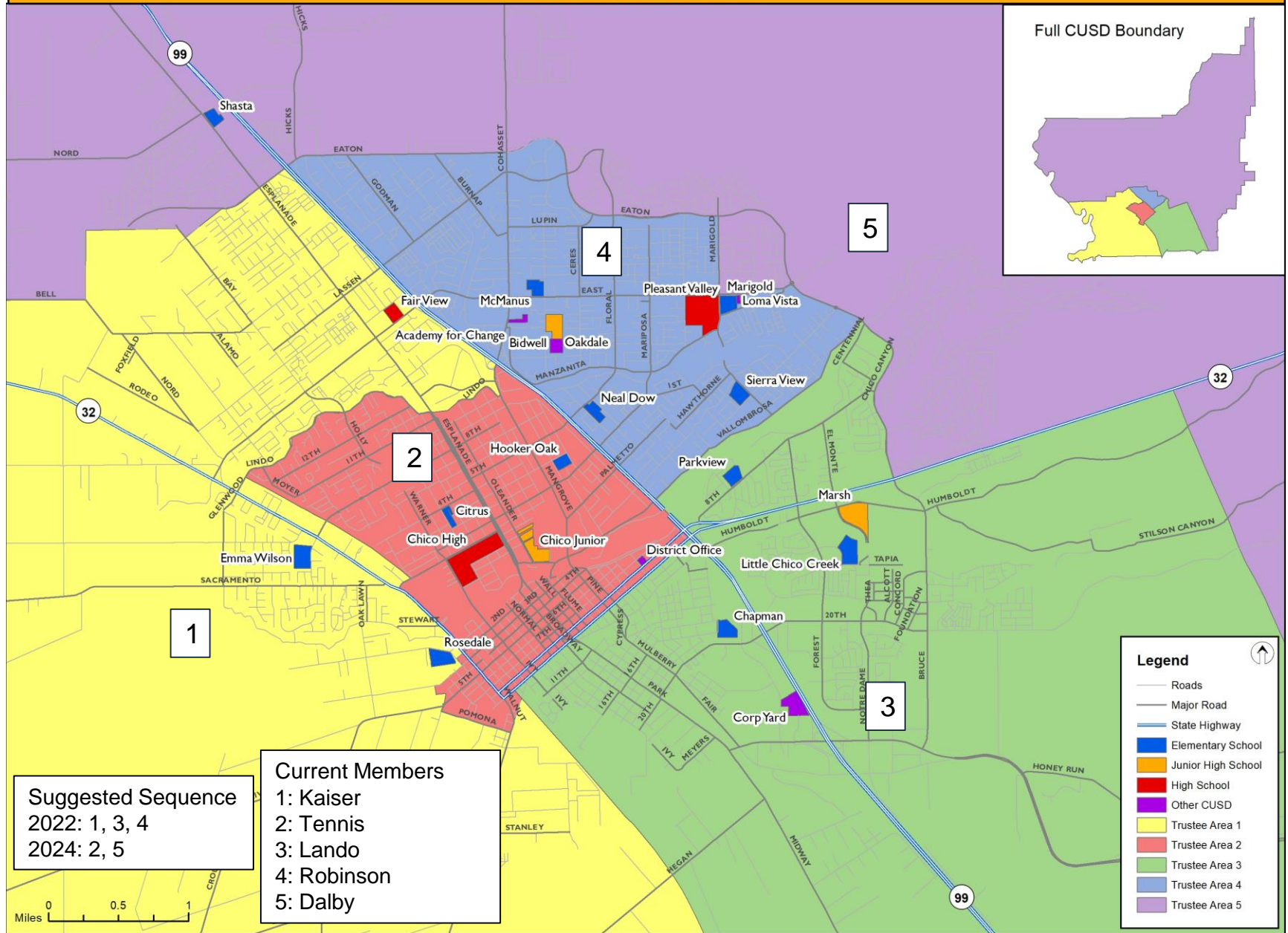
## Chico Unified School District





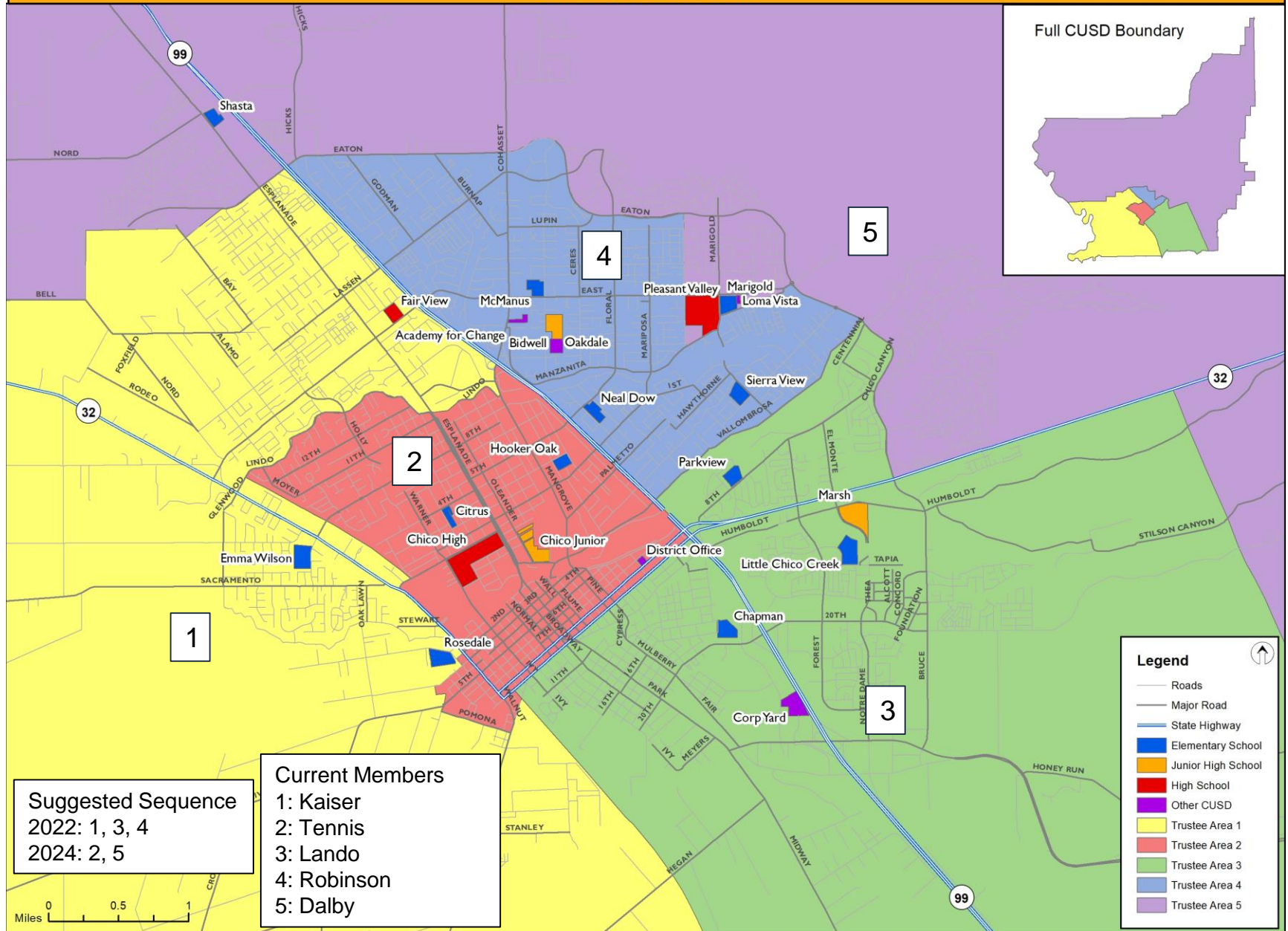
# Draft Trustee Area Map Option: Orange A

## Chico Unified School District



# Draft Trustee Area Map Option: Orange B

## Chico Unified School District



# Criteria Data for Draft Trustee Area Maps





# Summary of Criteria Data

CUSD Total	120,119			19.3%			96,964			17.5%		
Trustee Area	Total Population			% Hispanic			Voting Age Population			% 18+ Hispanic		
	Green	Orange A	Orange B	Green	Orange A	Orange B	Green	Orange A	Orange B	Green	Orange A	Orange B
1	24,011	24,296	24,296	23.5%	21.2%	21.2%	19,810	19,749	19,749	22.7%	19.3%	19.3%
2	24,403	24,122	24,122	19.0%	22.7%	22.7%	19,196	20,771	20,771	16.1%	21.7%	21.7%
3	23,420	23,010	23,010	20.8%	21.1%	21.1%	19,574	18,365	18,365	19.2%	18.9%	18.9%
4	24,210	24,751	23,773	19.5%	16.9%	17.1%	19,463	19,478	18,739	17.3%	14.7%	14.9%
5	24,075	23,940	24,918	14.0%	14.8%	14.7%	18,921	18,601	19,340	12.1%	12.6%	12.5%

CUSD Total	\$61,000			49.4%			50.1%			49.9%			72.4%		
Trustee Area	Median Income			% FRPM			% Owners			% Renters			Voter % of 18+ Population		
	Green	Orange A	Orange B	Green	Orange A	Orange B	Green	Orange A	Orange B	Green	Orange A	Orange B	Green	Orange A	Orange B
1	\$63,000	\$60,000	\$60,000	49.4%	54.5%	54.5%	48.6%	48.5%	48.5%	51.4%	51.5%	51.5%	75.2%	71.3%	71.3%
2	\$65,000	\$46,000	\$46,000	49.9%	58.4%	58.4%	53.1%	36.5%	36.5%	46.9%	63.5%	63.5%	69.6%	57.7%	57.7%
3	\$45,000	\$51,000	\$51,000	63.2%	58.4%	58.4%	36.3%	43.1%	43.1%	63.7%	56.9%	56.9%	58.3%	68.8%	68.8%
4	\$57,000	\$68,000	\$66,000	56.2%	48.1%	49.2%	46.2%	57.1%	52.8%	53.8%	42.9%	47.2%	72.5%	73.6%	70.5%
5	\$81,000	\$98,000	\$97,000	34.9%	35.7%	35.4%	64.8%	69.9%	72.6%	35.2%	30.1%	27.4%	87.0%	92.5%	94.9%

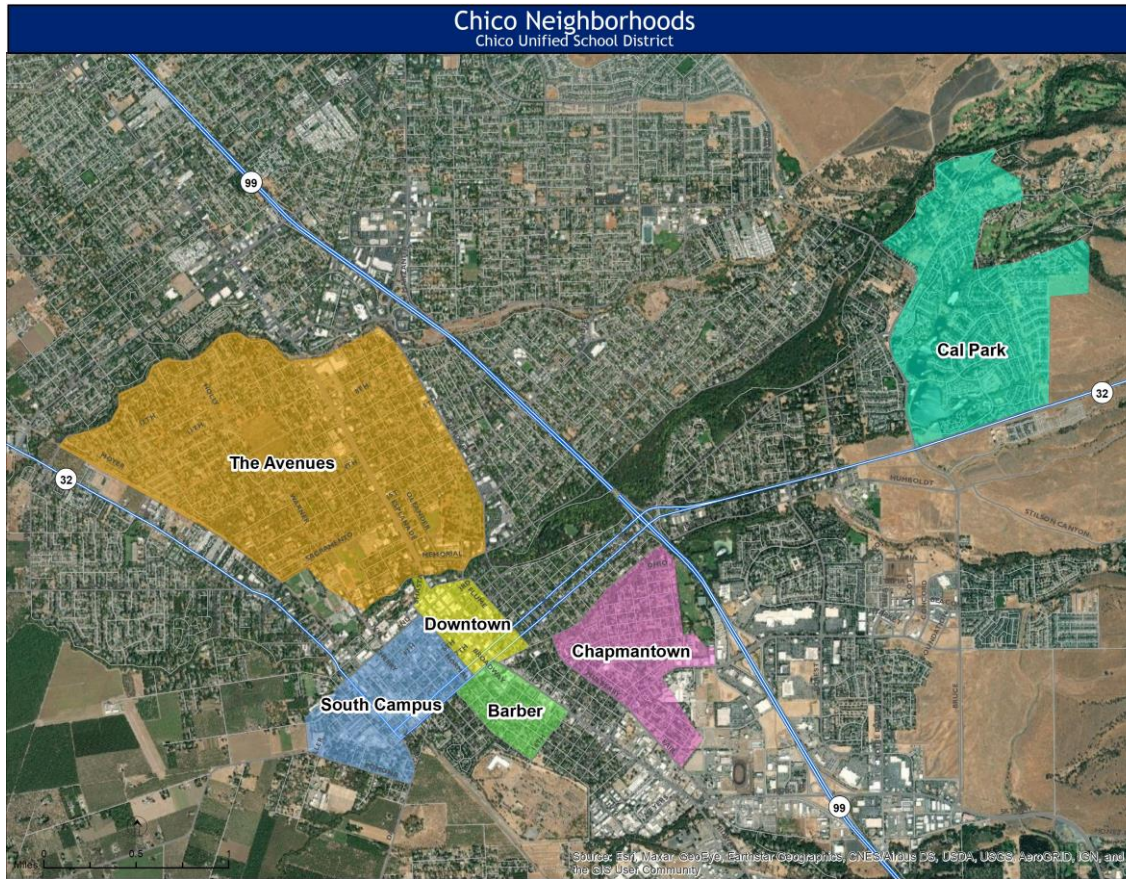
# Total Population by Race/Ethnicity

District-wide														
	Total Population							Voting Age Population						
	Population	% Hispanic	% White	% Asian	% Black	% All Other	% 2+ Races	Population	% Hispanic	% White	% Asian	% Black	% All Other	% 2+ Races
	120,119	19.3%	67.0%	4.0%	1.7%	1.8%	6.2%	96,964	17.5%	69.8%	4.0%	1.7%	1.7%	5.3%
Green Map Option														
Trustee Area	Total Population							Voting Age Population						
	Population	% Hispanic	% White	% Asian	% Black	% All Other	% 2+ Races	Population	% Hispanic	% White	% Asian	% Black	% All Other	% 2+ Races
1	24,011	23.5%	62.6%	4.1%	2.5%	1.6%	5.7%	19,810	22.7%	64.3%	4.1%	2.4%	1.5%	5.0%
2	24,403	19.0%	68.2%	3.7%	1.5%	1.7%	6.0%	19,196	16.1%	71.9%	3.7%	1.4%	1.8%	5.2%
3	23,420	20.8%	64.4%	4.4%	1.8%	1.8%	6.8%	19,574	19.2%	67.2%	4.2%	1.8%	1.7%	5.9%
4	24,210	19.5%	66.6%	3.5%	1.5%	2.6%	6.4%	19,463	17.3%	69.7%	3.5%	1.6%	2.3%	5.6%
5	24,075	14.0%	73.3%	4.4%	1.1%	1.3%	6.0%	18,921	12.1%	76.4%	4.4%	1.0%	1.2%	4.8%
Orange A Map Option														
Trustee Area	Total Population							Voting Age Population						
	Population	% Hispanic	% White	% Asian	% Black	% All Other	% 2+ Races	Population	% Hispanic	% White	% Asian	% Black	% All Other	% 2+ Races
1	24,296	21.2%	65.8%	3.6%	1.8%	1.6%	6.0%	19,749	19.3%	68.5%	3.6%	1.8%	1.5%	5.3%
2	24,122	22.7%	62.8%	4.1%	2.5%	1.6%	6.3%	20,771	21.7%	64.6%	4.2%	2.5%	1.5%	5.6%
3	23,010	21.1%	63.8%	4.4%	1.6%	2.5%	6.7%	18,365	18.9%	67.2%	4.4%	1.6%	2.2%	5.7%
4	24,751	16.9%	70.3%	3.3%	1.2%	2.0%	6.3%	19,478	14.7%	73.6%	3.3%	1.2%	1.9%	5.3%
5	23,940	14.8%	72.4%	4.6%	1.1%	1.4%	5.6%	18,601	12.6%	75.9%	4.6%	1.0%	1.3%	4.7%
Orange B Map Option														
Trustee Area	Total Population							Voting Age Population						
	Population	% Hispanic	% White	% Asian	% Black	% All Other	% 2+ Races	Population	% Hispanic	% White	% Asian	% Black	% All Other	% 2+ Races
1	24,296	21.2%	65.8%	3.6%	1.8%	1.6%	6.0%	19,749	19.3%	68.5%	3.6%	1.8%	1.5%	5.3%
2	24,122	22.7%	62.8%	4.1%	2.5%	1.6%	6.3%	20,771	21.7%	64.6%	4.2%	2.5%	1.5%	5.6%
3	23,010	21.1%	63.8%	4.4%	1.6%	2.5%	6.7%	18,365	18.9%	67.2%	4.4%	1.6%	2.2%	5.7%
4	23,773	17.1%	70.1%	3.2%	1.3%	2.0%	6.4%	18,739	14.9%	73.5%	3.1%	1.2%	1.9%	5.3%
5	24,918	14.7%	72.5%	4.8%	1.1%	1.4%	5.5%	19,340	12.5%	75.9%	4.7%	1.0%	1.3%	4.7%

# Socioeconomic and Tenure Data

District-wide				
	Median Income	% FRPM	% Owners	% Renters
	\$61,000	49.4%	50.1%	49.9%
Green Map Option				
Trustee Area	Median Income	% FRPM	% Owners	% Renters
1	\$63,000	49.4%	48.6%	51.4%
2	\$65,000	49.9%	53.1%	46.9%
3	\$45,000	63.2%	36.3%	63.7%
4	\$57,000	56.2%	46.2%	53.8%
5	\$81,000	34.9%	64.8%	35.2%
Orange A Map Option				
Trustee Area	Median Income	% FRPM	% Owners	% Renters
1	\$60,000	54.5%	48.5%	51.5%
2	\$46,000	58.4%	36.5%	63.5%
3	\$51,000	58.4%	43.1%	56.9%
4	\$68,000	48.1%	57.1%	42.9%
5	\$98,000	35.7%	69.9%	30.1%
Orange B Map Option				
Trustee Area	Median Income	% FRPM	% Owners	% Renters
1	\$60,000	54.5%	48.5%	51.5%
2	\$46,000	58.4%	36.5%	63.5%
3	\$51,000	58.4%	43.1%	56.9%
4	\$66,000	49.2%	52.8%	47.2%
5	\$97,000	35.4%	72.6%	27.4%

# Analysis of Neighborhoods



Green Map Option						
Trustee Area	Barber	Chapman-town	Down-town	South Campus	The Avenues	Cal Park
1				X	X	
2					X	
3			X	X	X	
4	X	X				
5						X

Orange A Map Option						
Trustee Area	Barber	Chapman-town	Down-town	South Campus	The Avenues	Cal Park
1						
2			X	X	X	
3	X	X				
4						
5						X

Orange B Map Option						
Trustee Area	Barber	Chapman-town	Down-town	South Campus	The Avenues	Cal Park
1						
2			X	X	X	
3	X	X				
4						
5						X

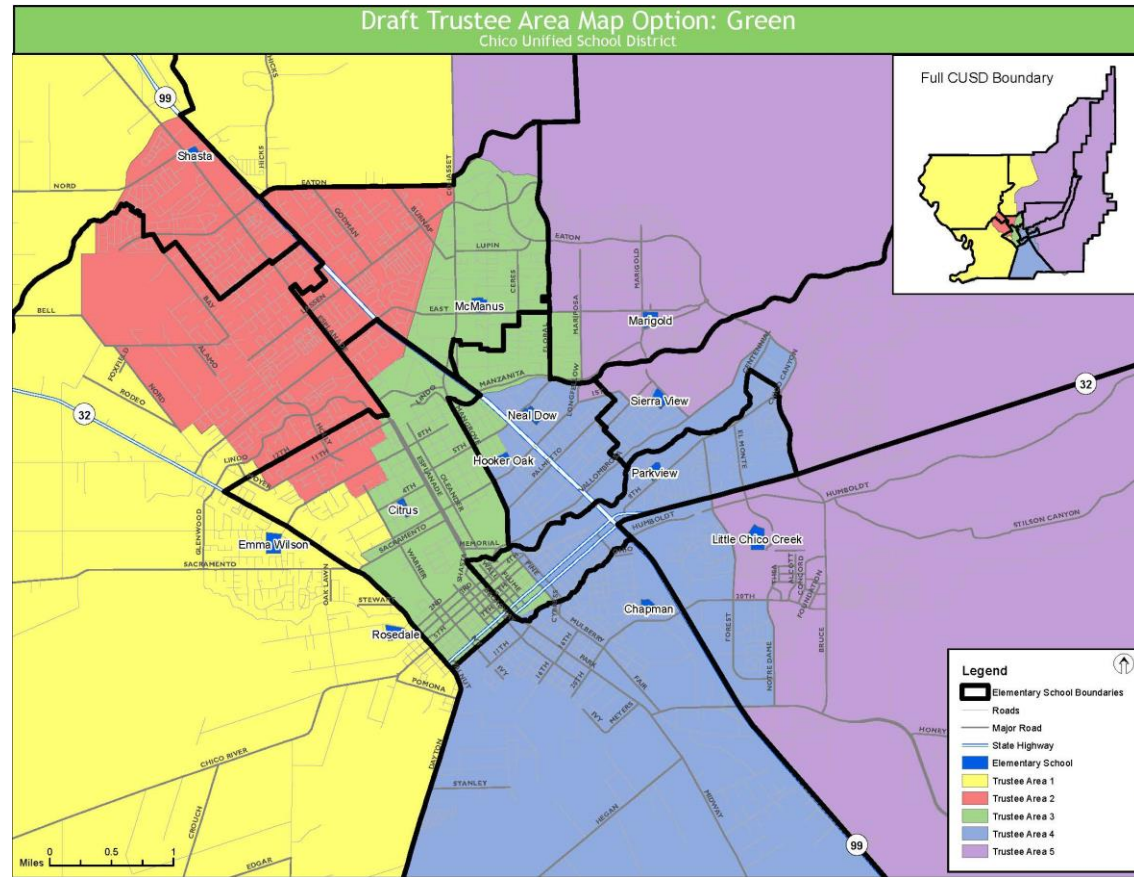


# Green Map Student Enrollment Analysis

Elementary School	Green 1	Green 2	Green 3	Green 4	Green 5
Chapman	2%	2%	2%	21%	1%
Citrus	15%	4%	15%	1%	<1%
Emma Wilson	30%	20%	3%	1%	1%
Little Chico Creek	1%	1%	3%	16%	20%
Marigold	2%	3%	6%	2%	30%
McManus	1%	13%	28%	1%	<1%
Neal Dow	3%	3%	12%	11%	4%
Parkview	3%	3%	5%	21%	5%
Shasta	23%	29%	1%	1%	1%
Sierra View	3%	4%	4%	9%	22%
Hooker Oak	4%	7%	9%	5%	4%
Rosedale	11%	8%	11%	11%	9%
Other	2%	2%	2%	1%	2%

Junior High School	Green 1	Green 2	Green 3	Green 4	Green 5
Bidwell	32%	52%	53%	15%	33%
Chico Jr	58%	34%	35%	38%	10%
Marsh	9%	12%	9%	44%	56%
Other	1%	2%	4%	4%	1%

High School	Green 1	Green 2	Green 3	Green 4	Green 5
Chico High	57%	50%	37%	60%	31%
Pleasant Valley	34%	43%	51%	29%	63%
Other	9%	8%	13%	11%	6%



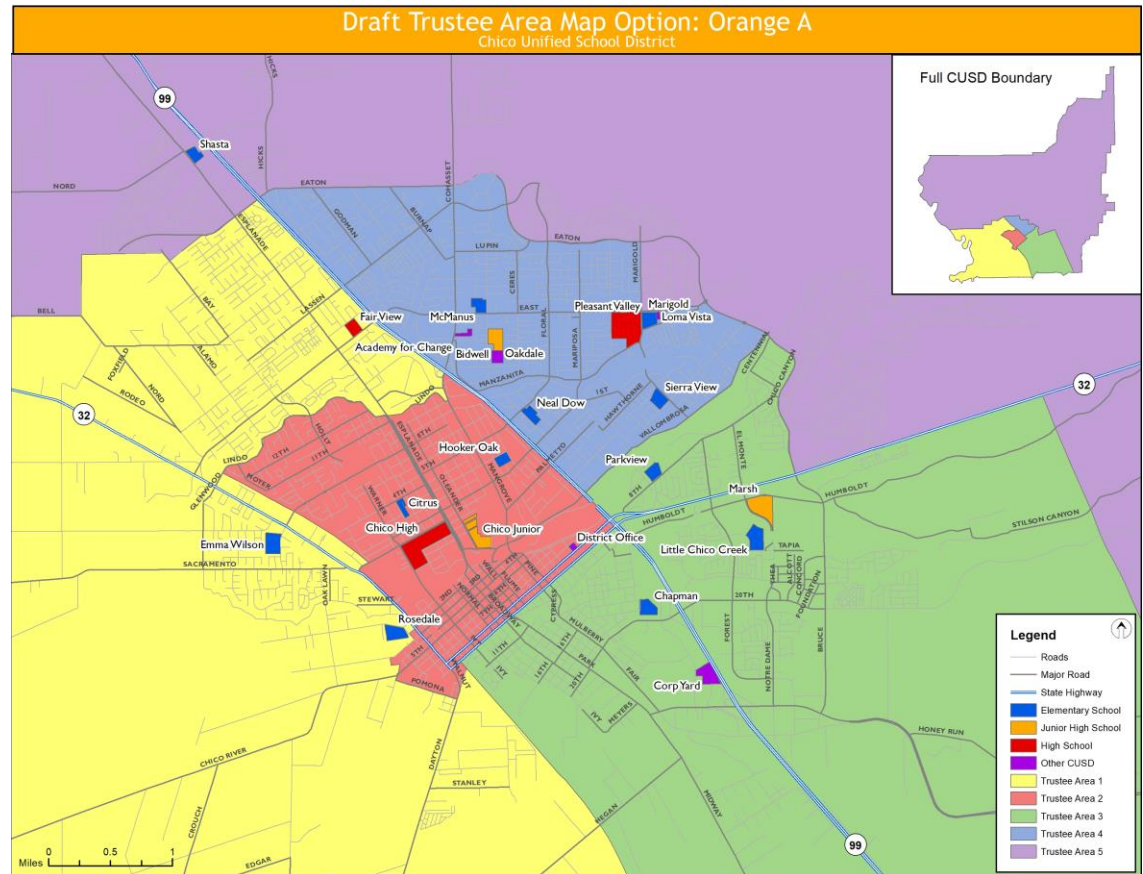
- Each column totals 100% and shows where the students who live in the Trustee Area are enrolled.
- This allows for a quick synopsis of which schools might correspond with some Trustee Areas independent of attendance boundaries.
- Note, students can be (and often are) enrolled at a school outside of their Trustee Area.
- For example, 30% of the elementary students in Green Area 1 are enrolled at Emma Wilson.

# Orange Map A Student Enrollment Analysis

Elementary School	Orange A 1	Orange A 2	Orange A 3	Orange A 4	Orange A 5
Chapman	2%	5%	19%	2%	1%
Citrus	9%	32%	1%	1%	<1%
Emma Wilson	43%	11%	1%	3%	3%
Little Chico Creek	2%	2%	36%	3%	2%
Marigold	1%	2%	2%	19%	15%
McManus	5%	2%	1%	21%	7%
Neal Dow	3%	7%	2%	13%	4%
Parkview	4%	9%	18%	5%	3%
Shasta	8%	1%	1%	1%	39%
Sierra View	2%	3%	4%	15%	14%
Hooker Oak	6%	11%	3%	8%	3%
Rosedale	11%	13%	12%	9%	7%
Other	2%	2%	2%	2%	1%

Junior High School	Orange A 1	Orange A 2	Orange A 3	Orange A 4	Orange A 5
Bidwell	27%	10%	8%	60%	59%
Chico Jr	58%	77%	27%	18%	12%
Marsh	12%	10%	62%	22%	27%
Other	3%	3%	3%	1%	2%

High School	Orange A 1	Orange A 2	Orange A 3	Orange A 4	Orange A 5
Chico High	63%	76%	60%	26%	30%
Pleasant Valley	27%	15%	27%	66%	64%
Other	10%	9%	12%	8%	6%



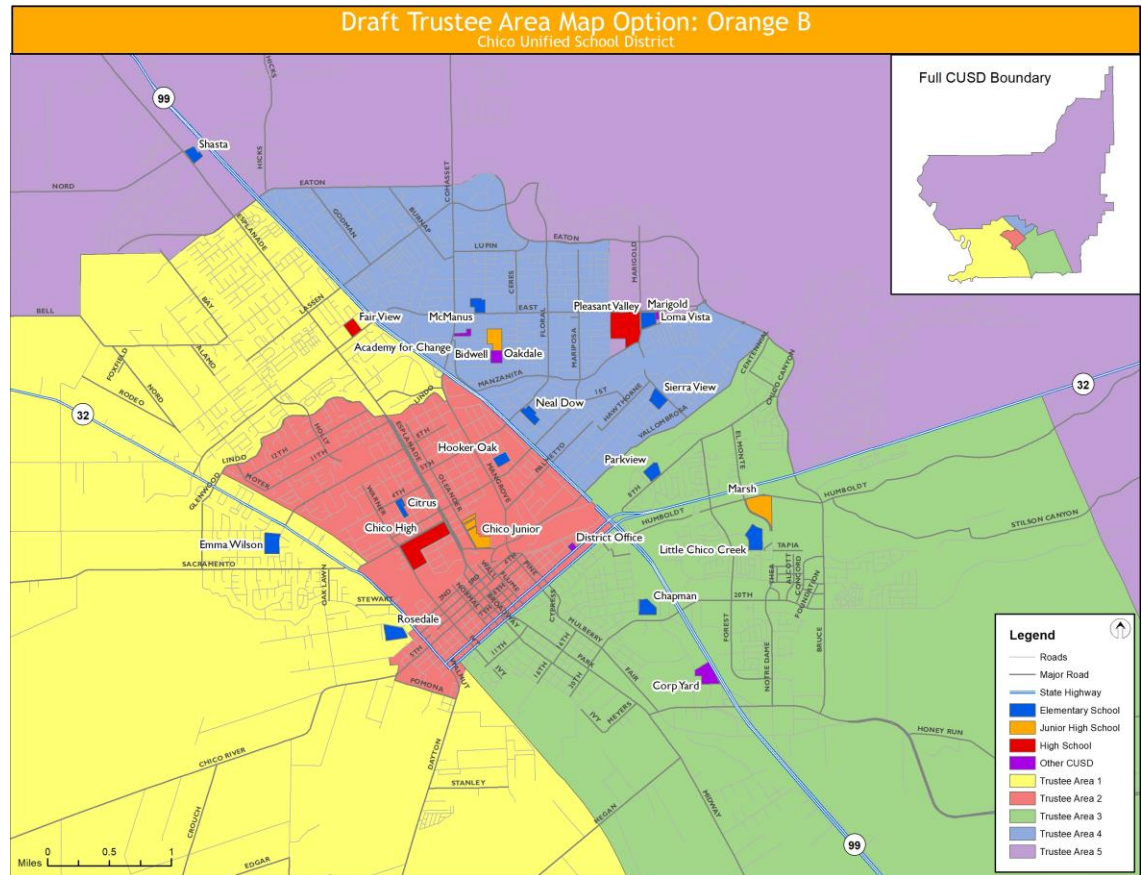
- Each column totals 100% and shows where the students who live in the Trustee Area are enrolled.
- This allows for a quick synopsis of which schools might correspond with some Trustee Areas independent of attendance boundaries.
- Note, students can be (and often are) enrolled at a school outside of their Trustee Area.
- For example, 43% of the elementary students in Orange A Area 1 are enrolled at Emma Wilson.

# Orange Map B Student Enrollment Analysis

Elementary School	Orange B 1	Orange B 2	Orange B 3	Orange B 4	Orange B 5
Chapman	2%	5%	19%	2%	1%
Citrus	9%	32%	1%	1%	<1%
Emma Wilson	43%	11%	1%	3%	3%
Little Chico Creek	2%	2%	36%	3%	2%
Marigold	1%	2%	2%	17%	17%
McManus	5%	2%	1%	22%	6%
Neal Dow	3%	7%	2%	13%	4%
Parkview	4%	9%	18%	4%	3%
Shasta	8%	1%	1%	1%	38%
Sierra View	2%	3%	4%	15%	14%
Hooker Oak	6%	11%	3%	8%	3%
Rosedale	11%	13%	12%	9%	7%
Other	2%	2%	2%	2%	1%

Junior High School	Orange B 1	Orange B 2	Orange B 3	Orange B 4	Orange B 5
Bidwell	27%	10%	8%	59%	59%
Chico Jr	58%	77%	27%	18%	12%
Marsh	12%	10%	62%	21%	27%
Other	3%	3%	3%	1%	2%

High School	Orange B 1	Orange B 2	Orange B 3	Orange B 4	Orange B 5
Chico High	63%	76%	60%	26%	29%
Pleasant Valley	27%	15%	27%	65%	65%
Other	10%	9%	12%	9%	6%



- Each column totals 100% and shows where the students who live in the Trustee Area are enrolled.
- This allows for a quick synopsis of which schools might correspond with some Trustee Areas independent of attendance boundaries.
- Note, students can be (and often are) enrolled at a school outside of their Trustee Area.
- For example, 43% of the elementary students in Orange B Area 1 are enrolled at Emma Wilson.

# FRPM Analysis by Elementary School

School	% FRPM Enrollment	% FRPM Residents
Chapman	90.4%	77.8%
Citrus	89.2%	71.1%
Emma Wilson	64.2%	54.0%
Little Chico Creek	69.8%	60.5%
Marigold	30.9%	29.1%
McManus	84.5%	69.9%
Neal Dow	49.0%	40.4%
Parkview	36.9%	50.6%
Shasta	32.6%	33.4%
Sierra View	19.1%	22.3%
Hooker Oak	40.4%	N/A
Rosedale	41.6%	N/A
CUSD	51.2%	





# Registered Voter Analysis

District-wide				
	Total Population	18+ Population	Registered Voters	Voter % of 18+ Pop.
	120,119	96,964	70,247	72.4%
Green Map Option				
Trustee Area	Total Population	18+ Population	Registered Voters	Voter % of 18+ Pop.
1	24,011	19,810	14,893	75.2%
2	24,403	19,196	13,367	69.6%
3	23,420	19,574	11,416	58.3%
4	24,210	19,463	14,116	72.5%
5	24,075	18,921	16,455	87.0%
Orange A Map Option				
Trustee Area	Total Population	18+ Population	Registered Voters	Voter % of 18+ Pop.
1	24,296	19,749	14,083	71.3%
2	24,122	20,771	11,986	57.7%
3	23,010	18,365	12,626	68.8%
4	24,751	19,478	14,345	73.6%
5	23,940	18,601	17,207	92.5%
Orange B Map Option				
Trustee Area	Total Population	18+ Population	Registered Voters	Voter % of 18+ Pop.
1	24,296	19,749	14,083	71.3%
2	24,122	20,771	11,986	57.7%
3	23,010	18,365	12,626	68.8%
4	23,773	18,739	13,207	70.5%
5	24,918	19,340	18,345	94.9%



# Next Steps



# Proposed Timeline

Date	Action
September 1, 2021	Public Outreach Meeting #1
September 15, 2021	Public Outreach Meeting #2
October 20, 2021	Presentation of Draft Trustee Area Maps
November 3, 2021	First Hearing on Draft Maps
November 17, 2021	Second Hearing on Draft Maps after incorporating feedback from First Hearing.
By November 24, 2021	Final map options based on all Board and public feedback to be posted on District website
January 19, 2022	Additional map options and data to be presented based on feedback received since previous meeting.
February 2, 2022	Public hearing on all presented map options. Board <i>can</i> select map if no new options presented.
February 16, 2022	Board to adopt map.
March	Approval of trustee area map by County Committee on School District Reorganization (County of Board of Education)
TBD	State Board of Education approval of CUSD waiver of election, which automatically establishes trustee area elections
TBD	The first election to use the trustee areas must be held more than 120 days after trustee areas are established by the State Board of Education